



---

SPARE PARTS LIST

JN-480.

Electro-Pneumatic Tire Changer

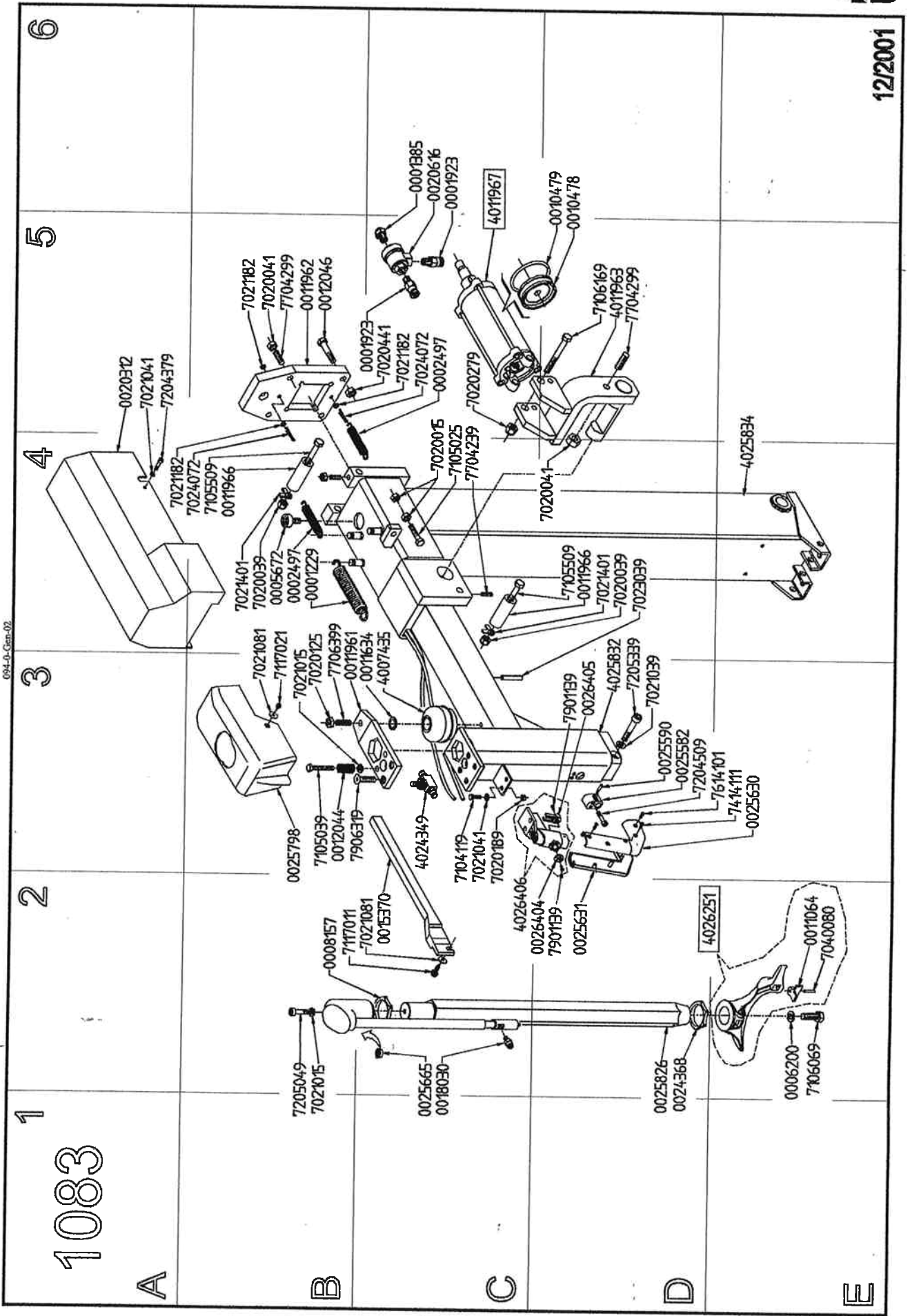
**BOXER SUPER LX**





12/2001

094-D-Cam-02



1  
1083  
2  
3  
4  
5  
6

A

B

C

D

E



1084

A

- 7020179
- 0001363
- 0014040
- 0014039

- 0025853
- 0025802

- 0001822
- 0025708

B

- 0025662
- 7021091
- 7117021

- 0014040
- 0001363
- 7020179

- 0003280
- 7020015
- 0010721

C

- 7021081
- 7117021

0026106

- 7206695
- 7206225
- 7021025
- 4021765
- 7021159
- 7020125

D

4025846

- 0024686
- 0001683
- 0001684
- 0021409
- 0011132
- 0025849
- 0025850
- 0025849
- 0021409
- 0002273

E

7020279

0025836

7106689

F

12/2001

094-0-Gen-02

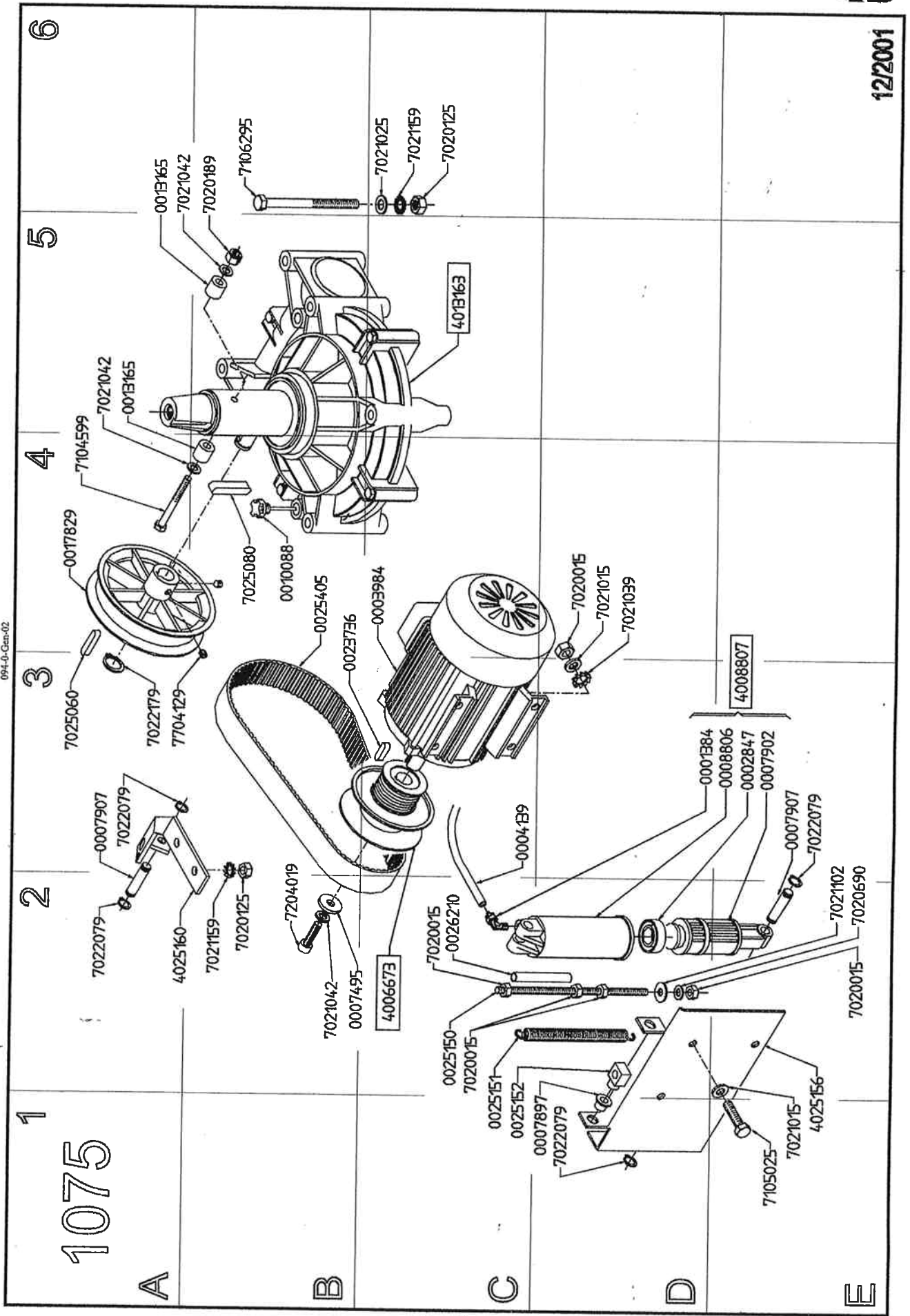






12/2001

094-U-Cara-02

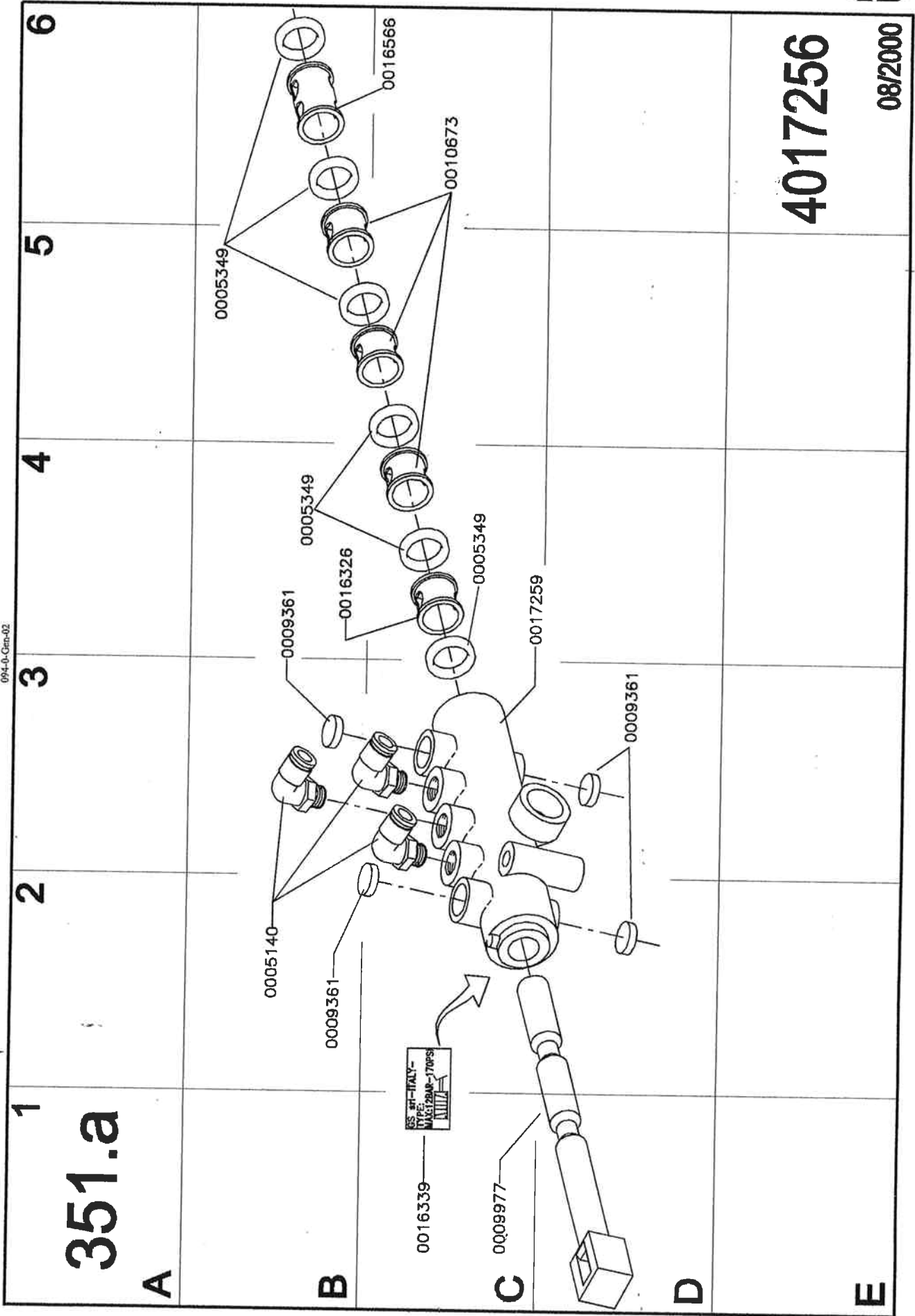








094-0-Crem-02



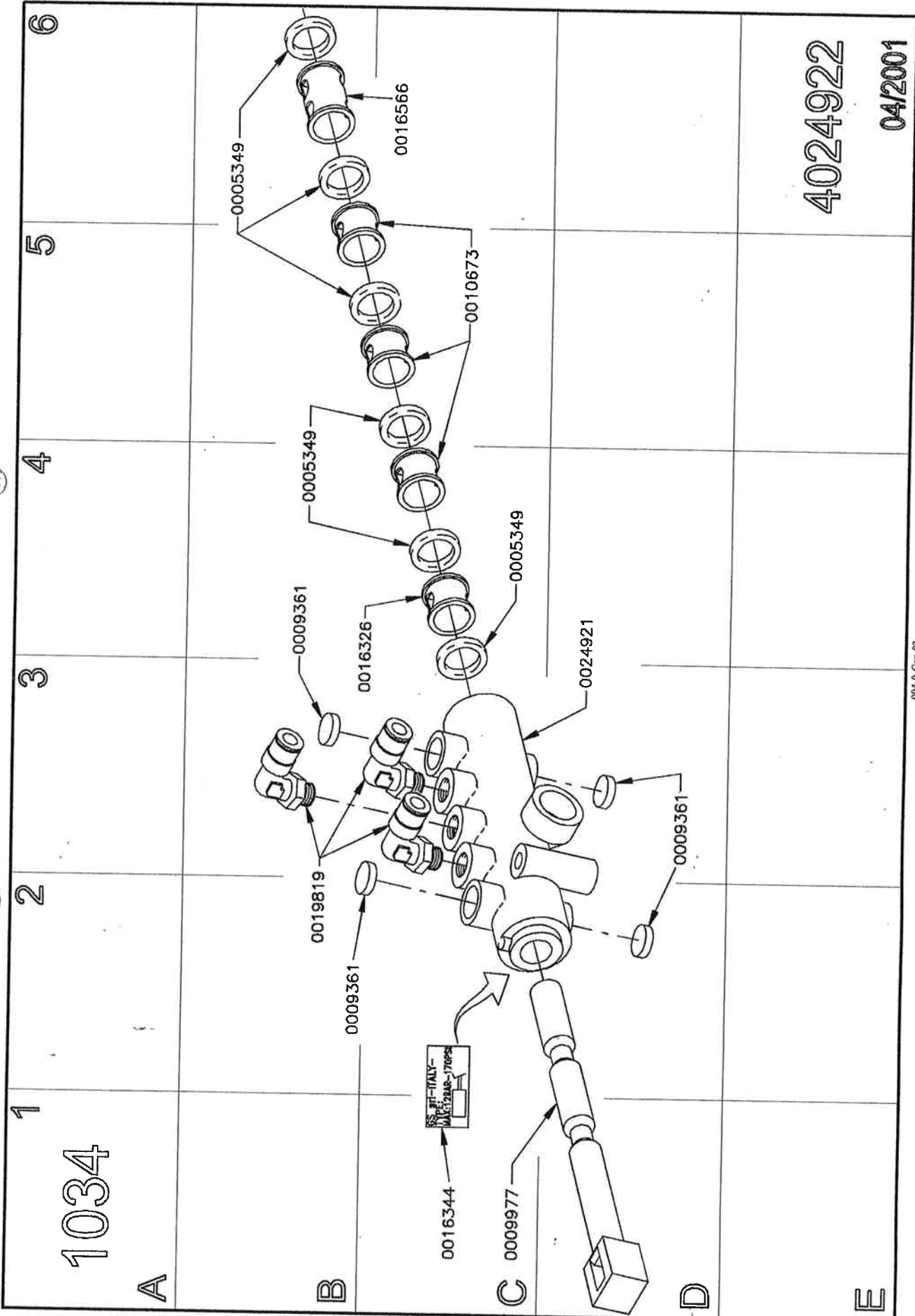
4017256

08/2000



4024922

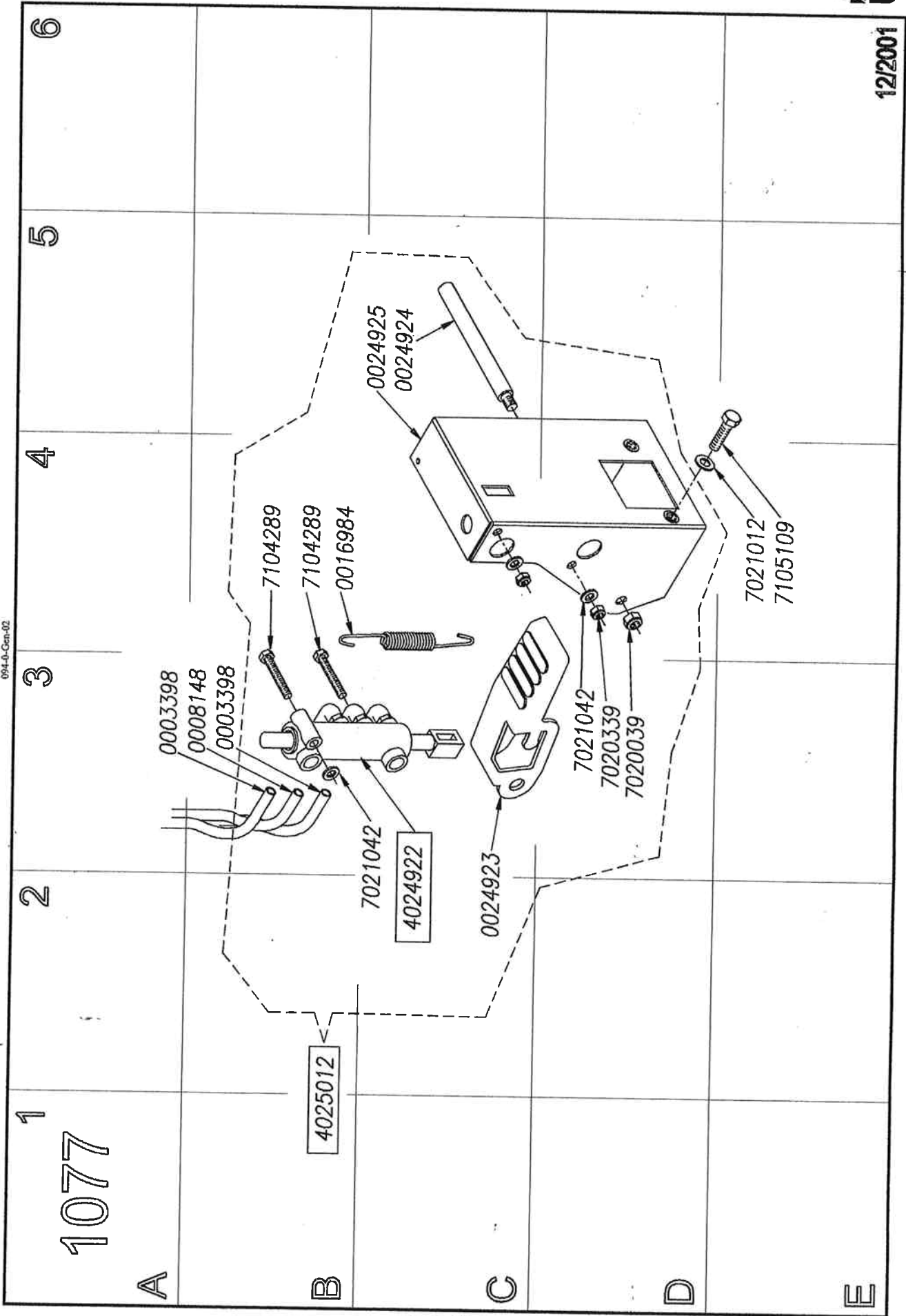
04/2001



094-D-Corr-02



094.0-Gen-02



6

5

4

3

2

1

1077

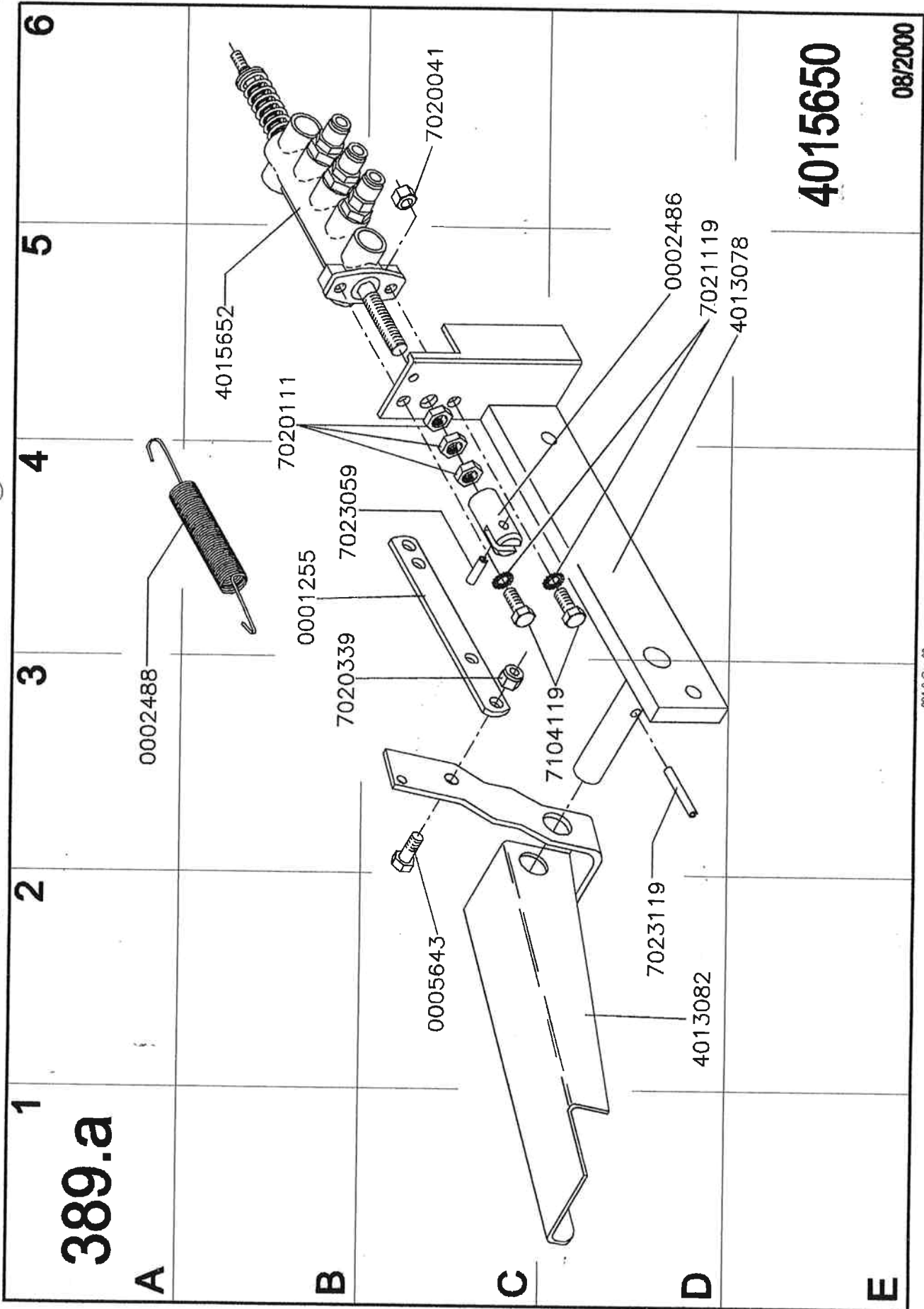
A

B

C

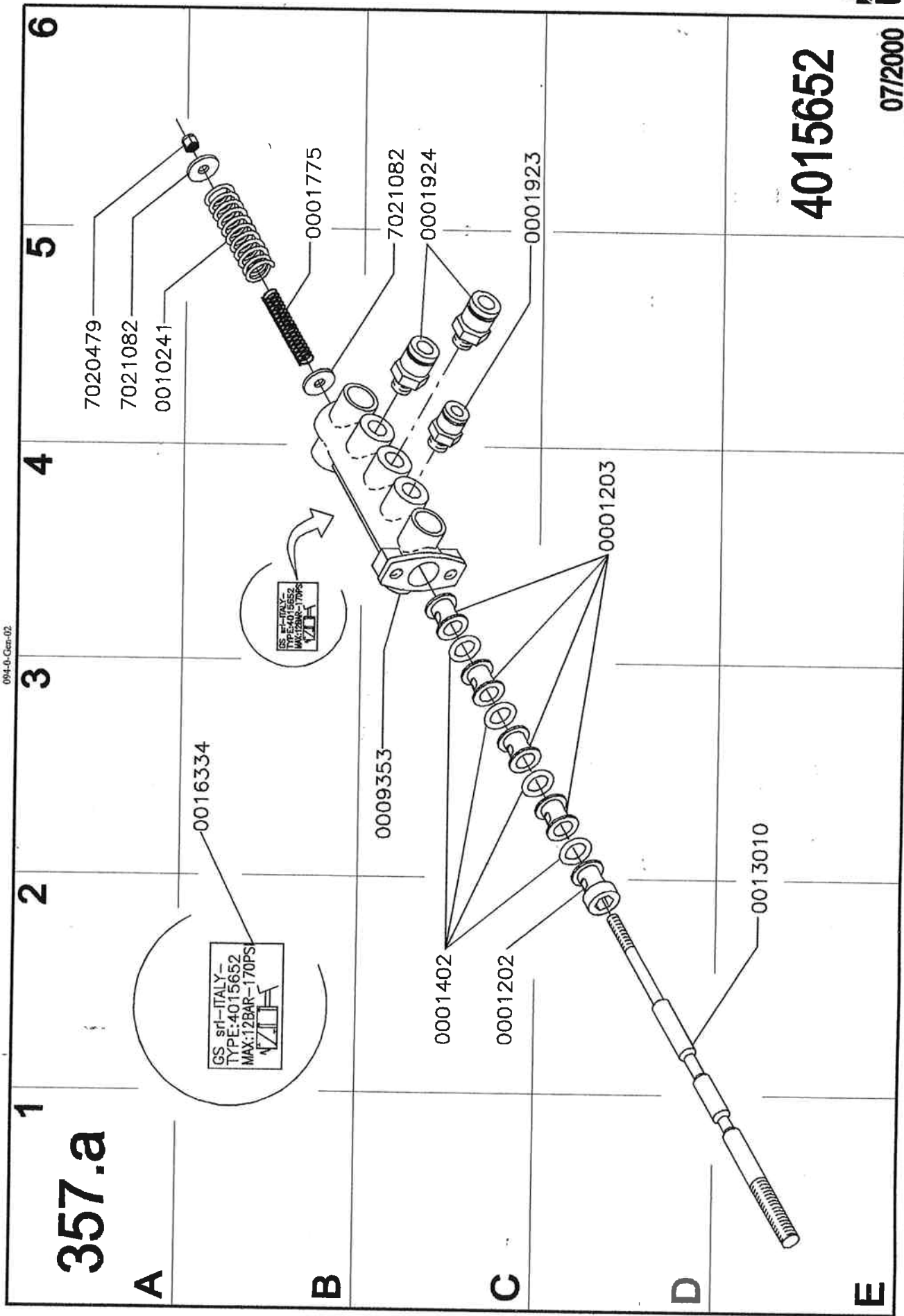
D

E





094-Jr-Cen-02



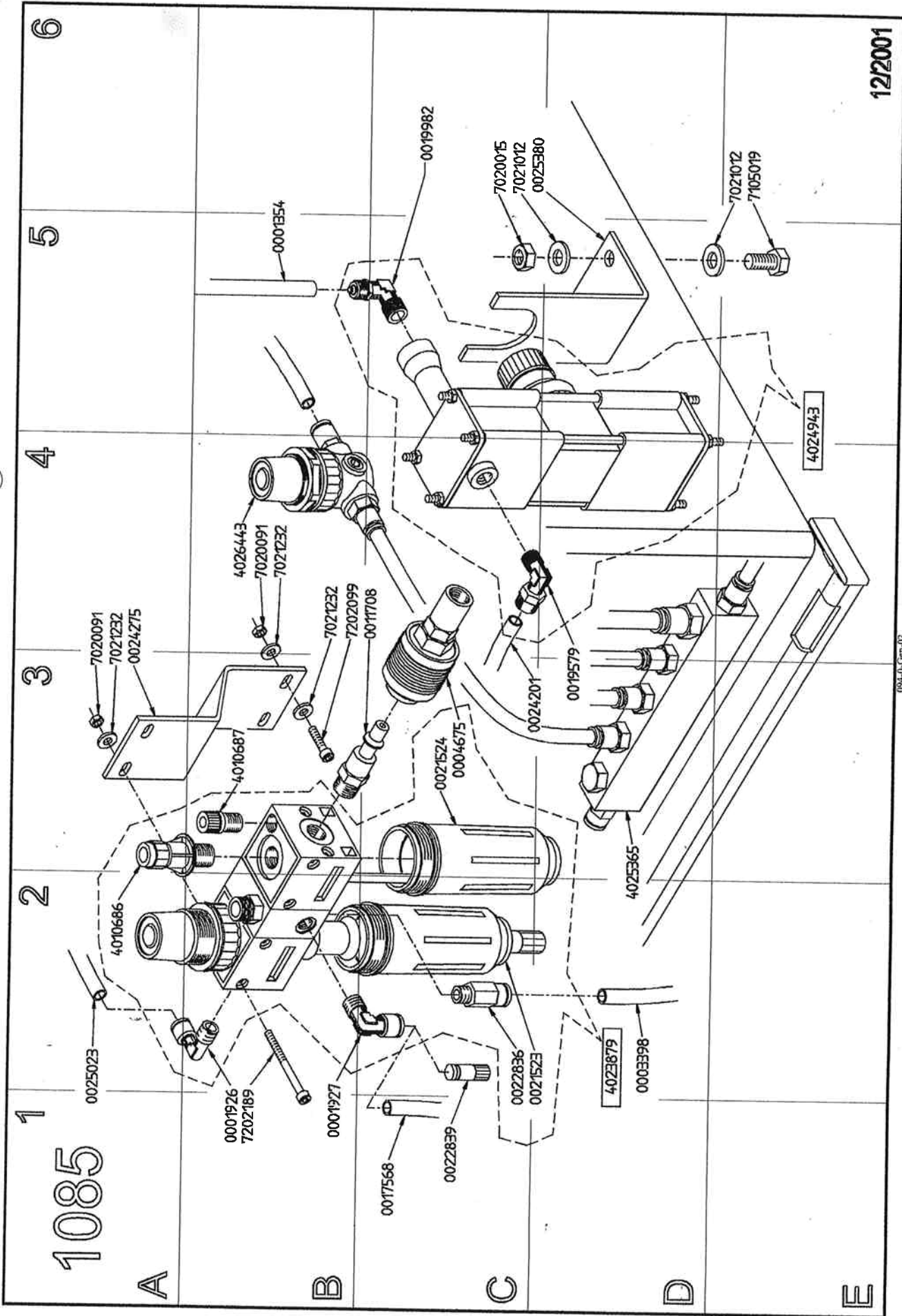
357.a

4015652

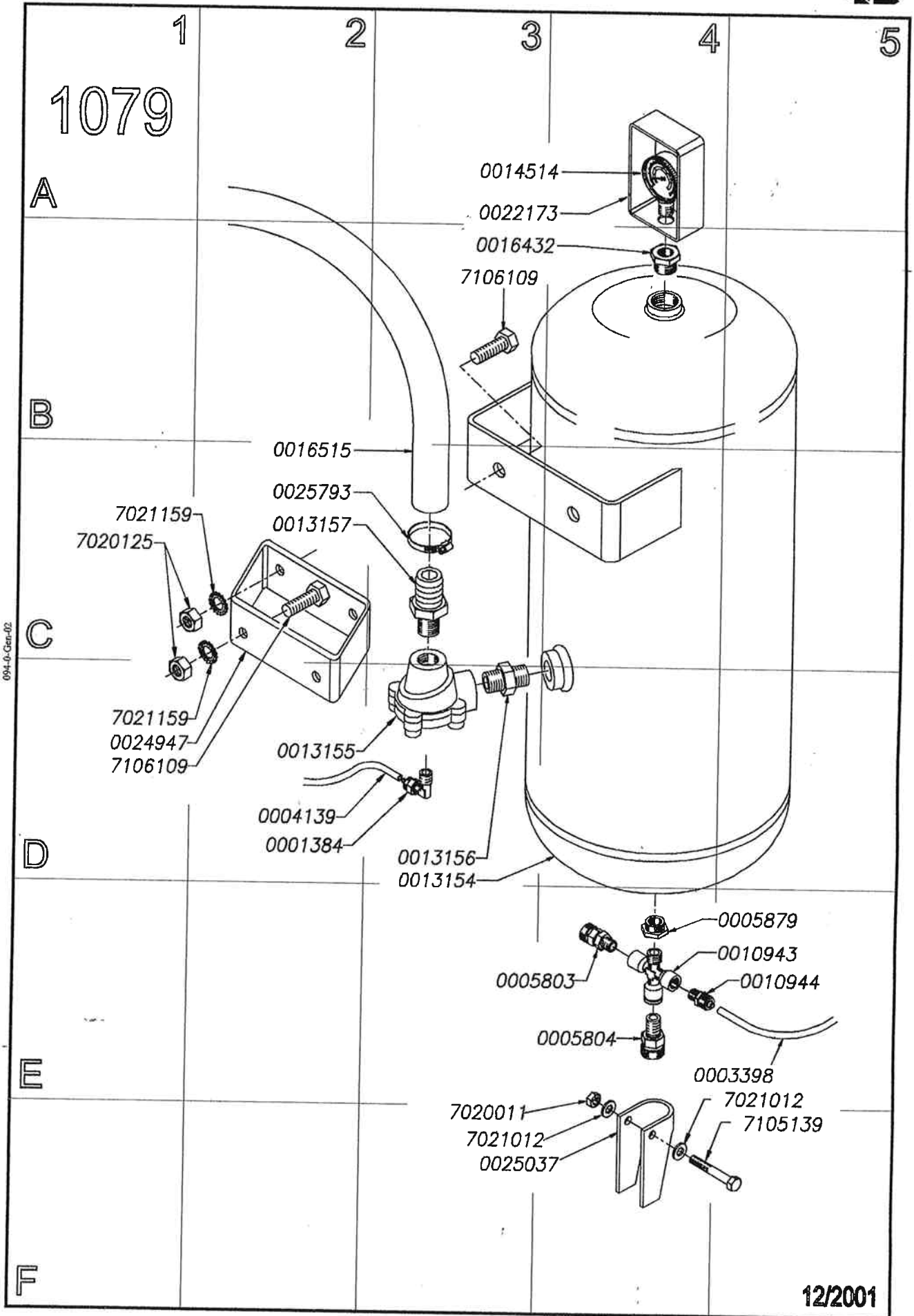
07/2000



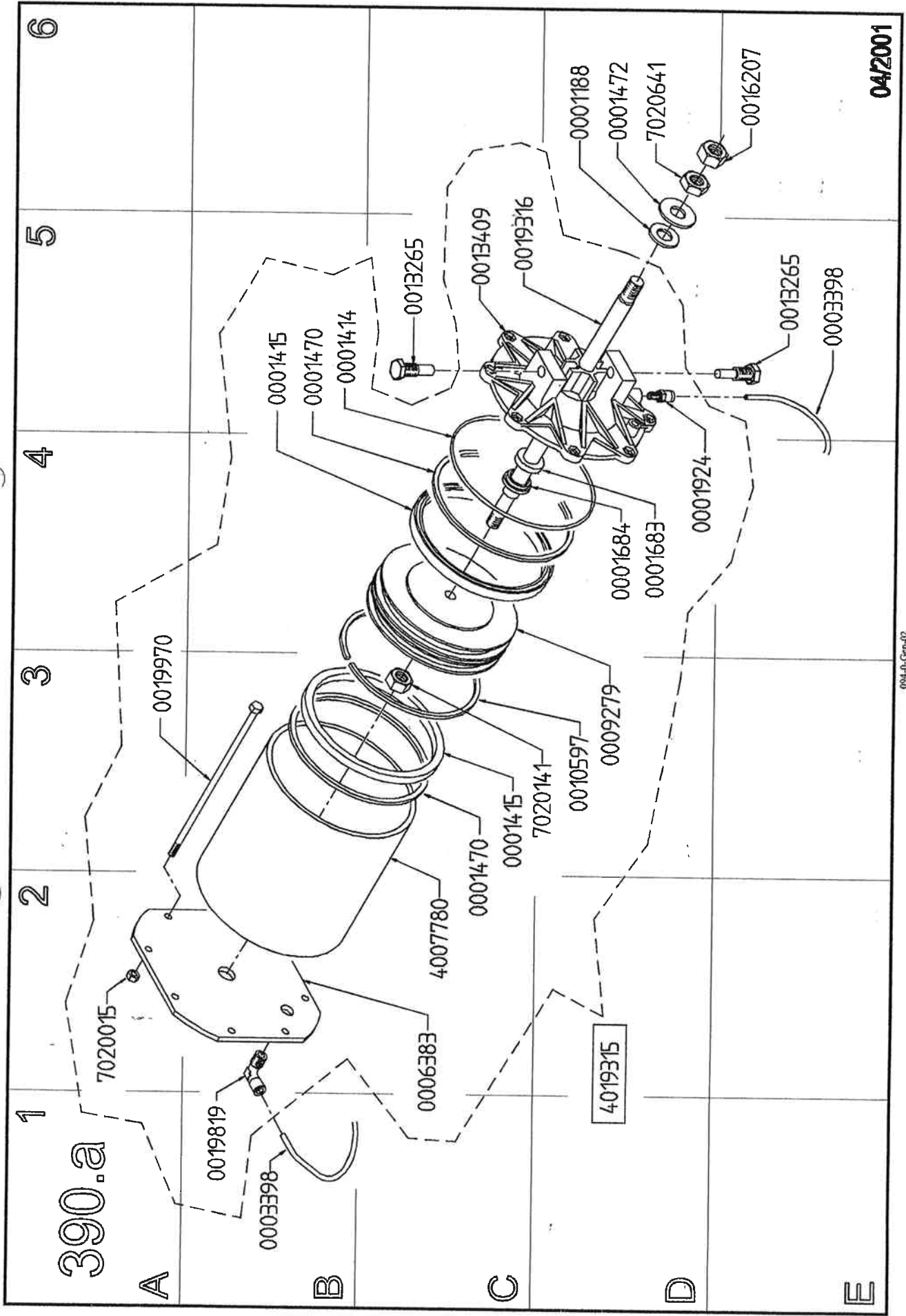
12/2001



094-D-Carr-02



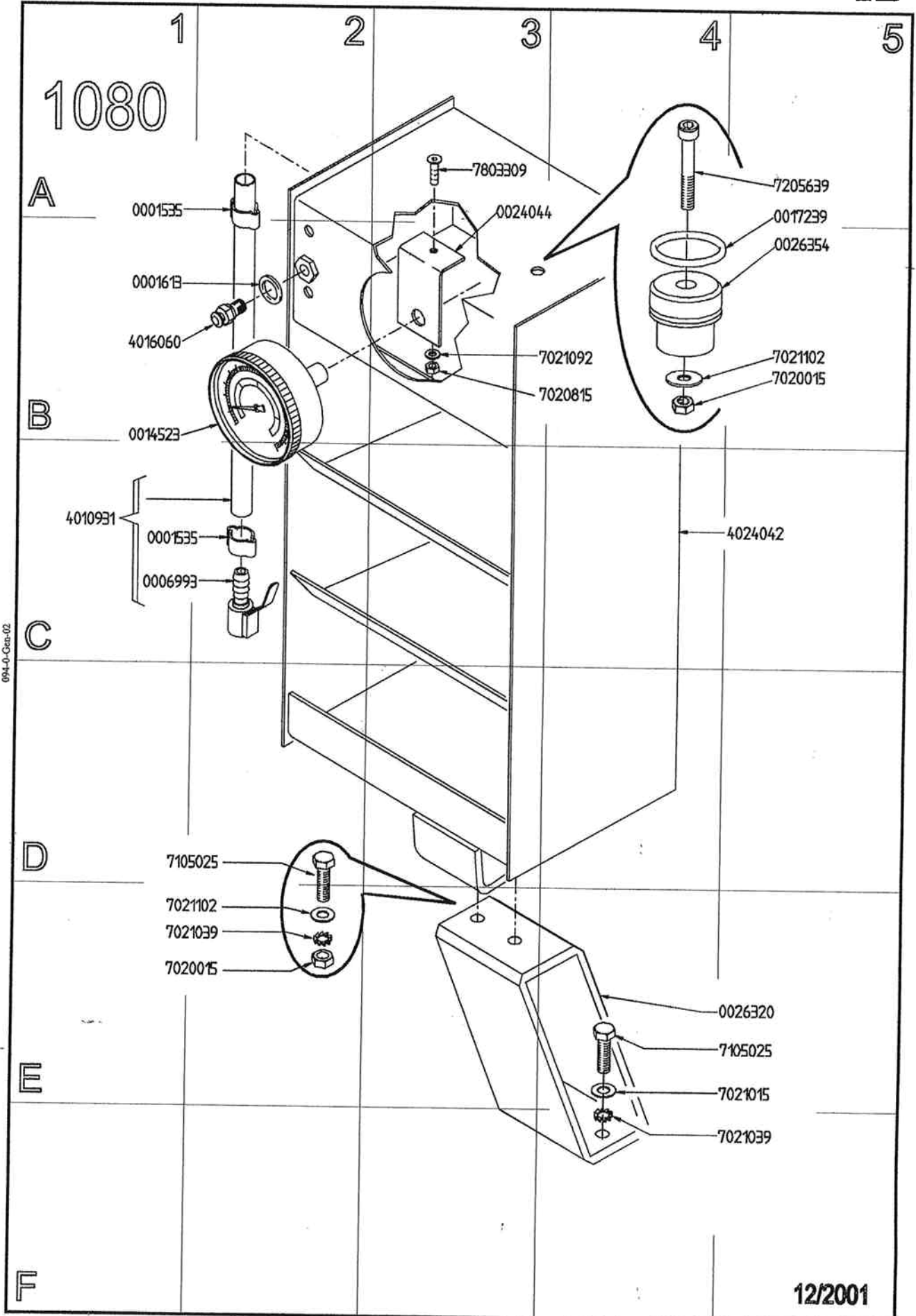
094-0-Cen-02



04/2001

094-0-Gen-02





094-0-Cat.02

12/2001









Manufacturer reserves the right of modification without notice.

---



GS s.r.l. - Via Provinciale per Carpi, 33  
42015 CORREGGIO  
(Reggio Emilia) - Italy  
Tel. ++39 (0)522 632282  
++39 (0)522 642660  
Fax ++39 (0)522 641830  
Email [gs.sales@gsboxer.com](mailto:gs.sales@gsboxer.com)  
Internet <http://www.gsboxer.com>

**SUPER LX**

Rev. 10

Gen. 2002