

**JN 480 24''**

**AIR ELECTRIC  
TYRE CHANGER FOR CAR,  
LIGHT TRUCK AND  
MOTORCYCLE WHEELS**

SPARE PARTS

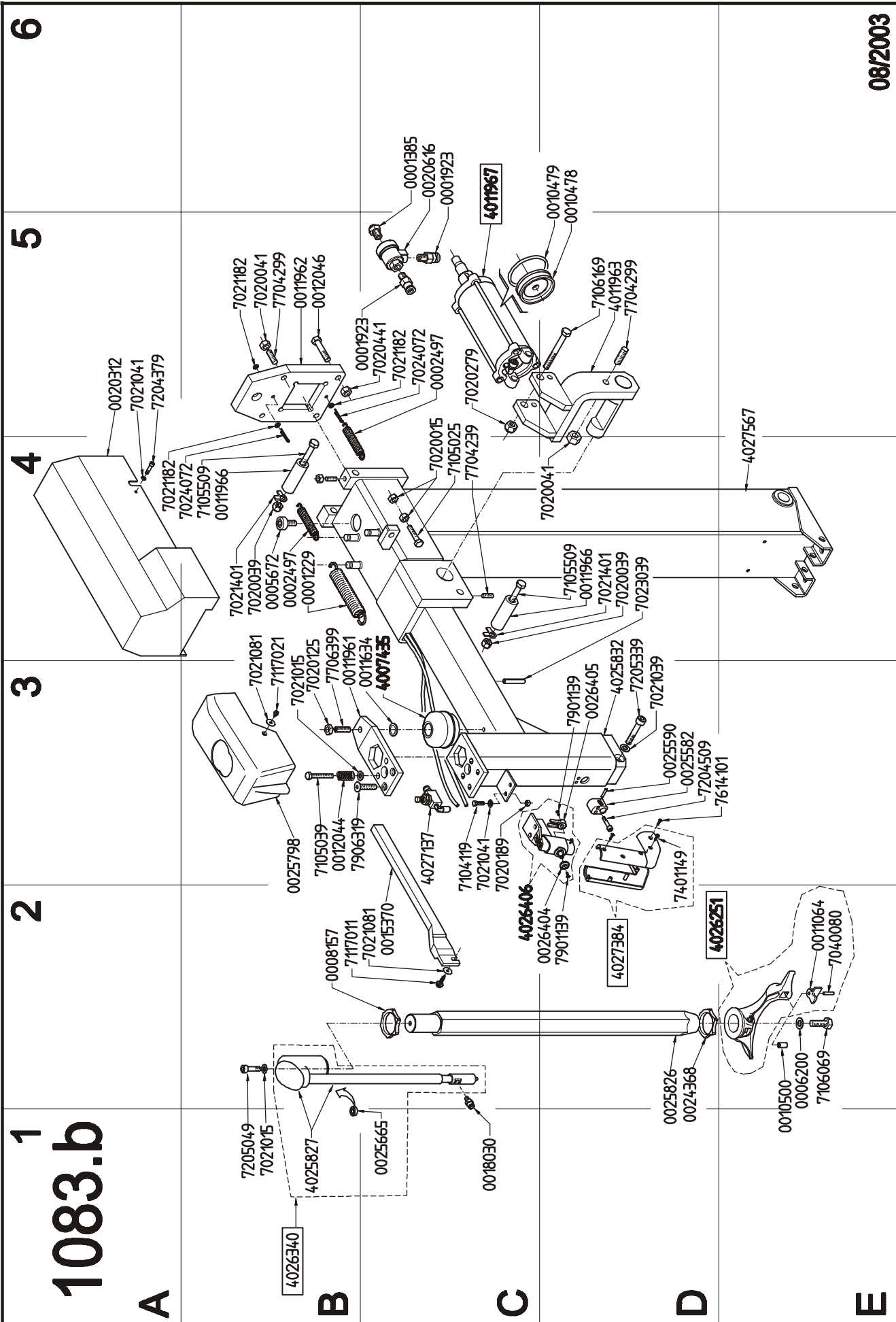


182-c-April-05

-----  
**THIS PART IS FOR EXCLUSIVE USE OF QUALIFIED  
PERSONNEL FOR MAINTENANCE AND SERVICE PURPOSES.**  
-----

**On order specify:** type of machine and serial number item code and quantity.





08/2003

182-c-April-05



# 1084.b

**A**

- 7020179
- 0001363
- 0014040
- 0014039

**B**

- 0025662
- 7021091
- 7117021

**C**

- 7021081
- 7117021

**D**

**4027161**

**E**

7020279

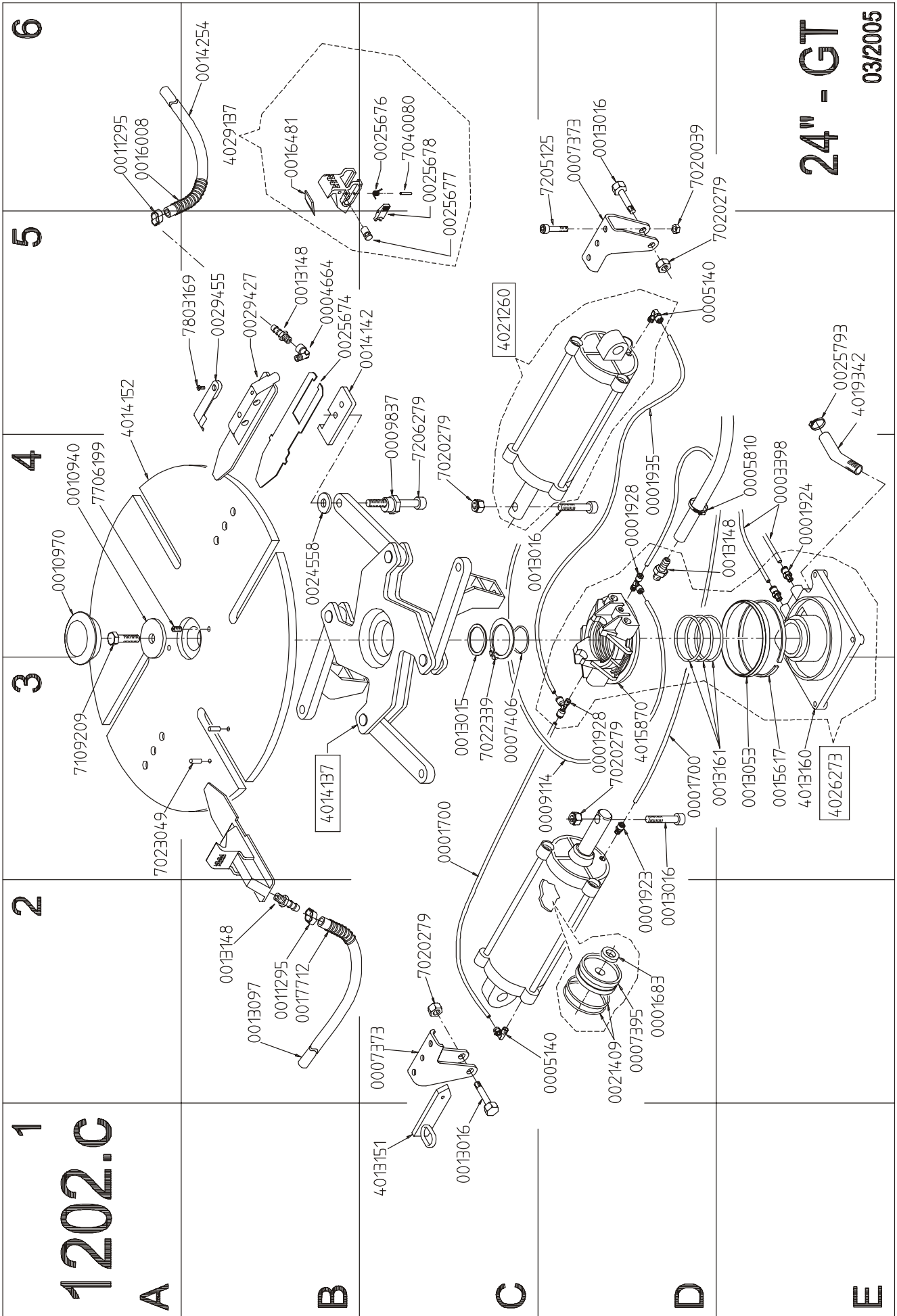
0025836

7106689

**F**

182-c-April-05

**08/2003**

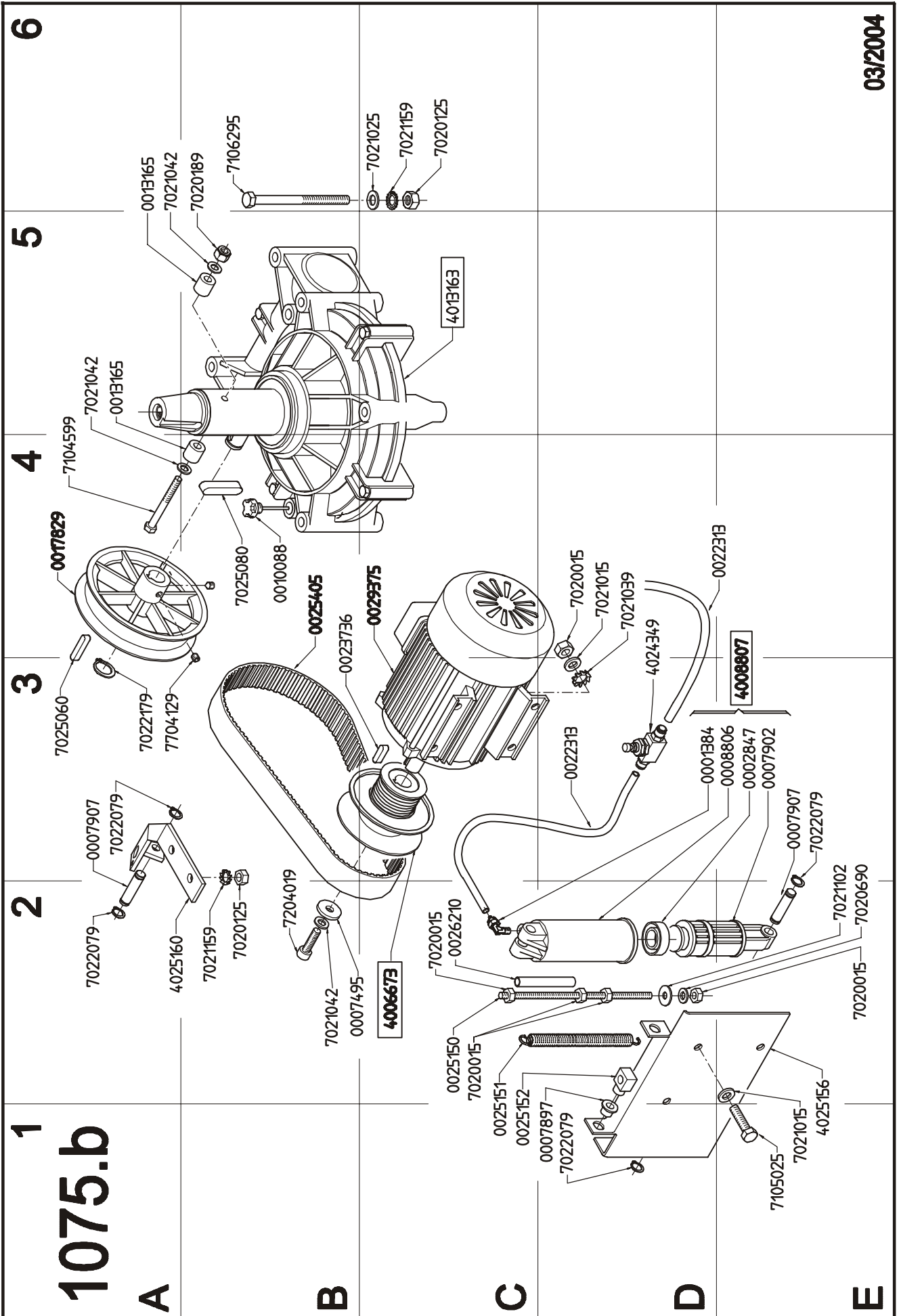


24" - GT  
03/2005

182-c-April-05



182-c-April-05



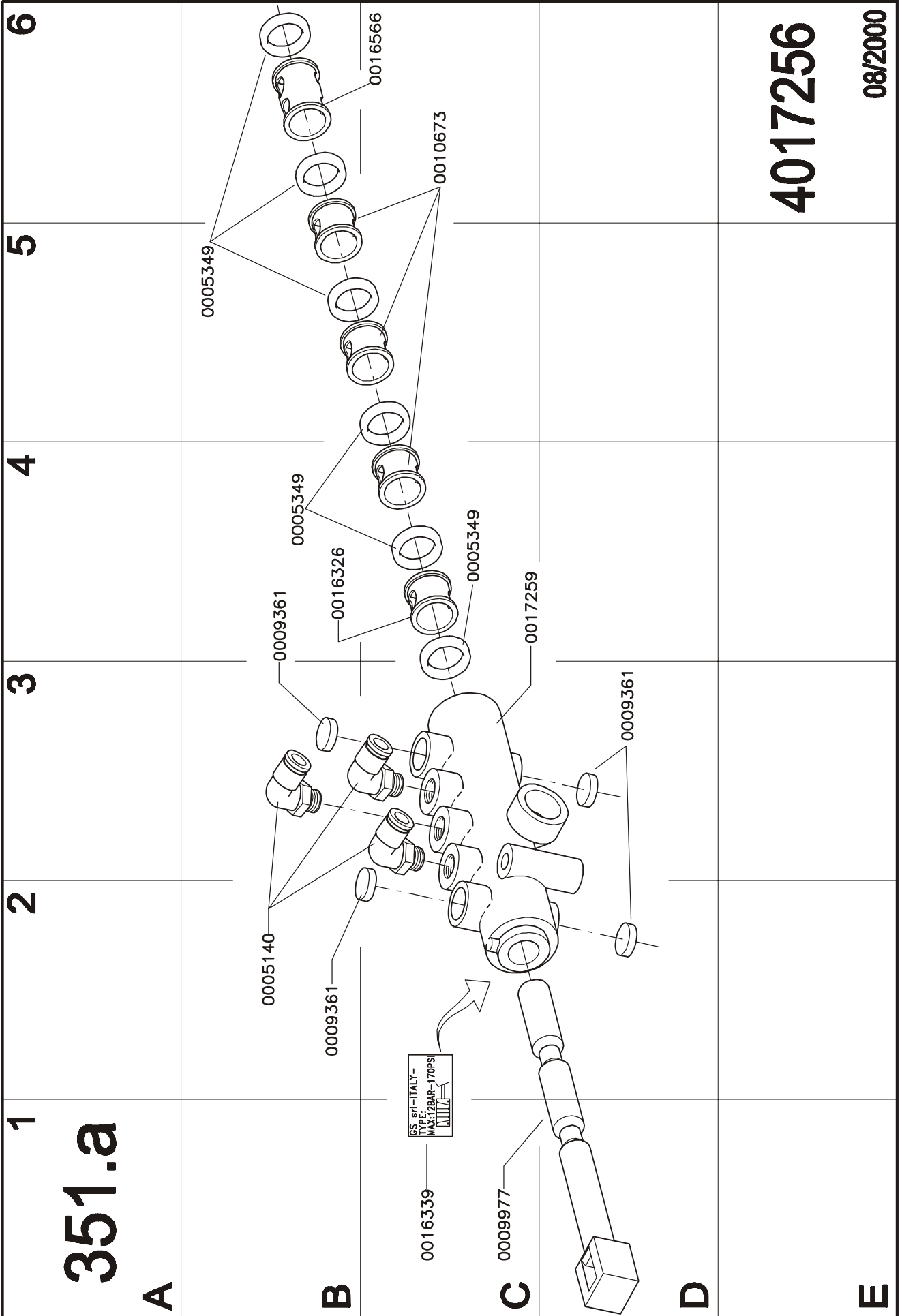
03/2004





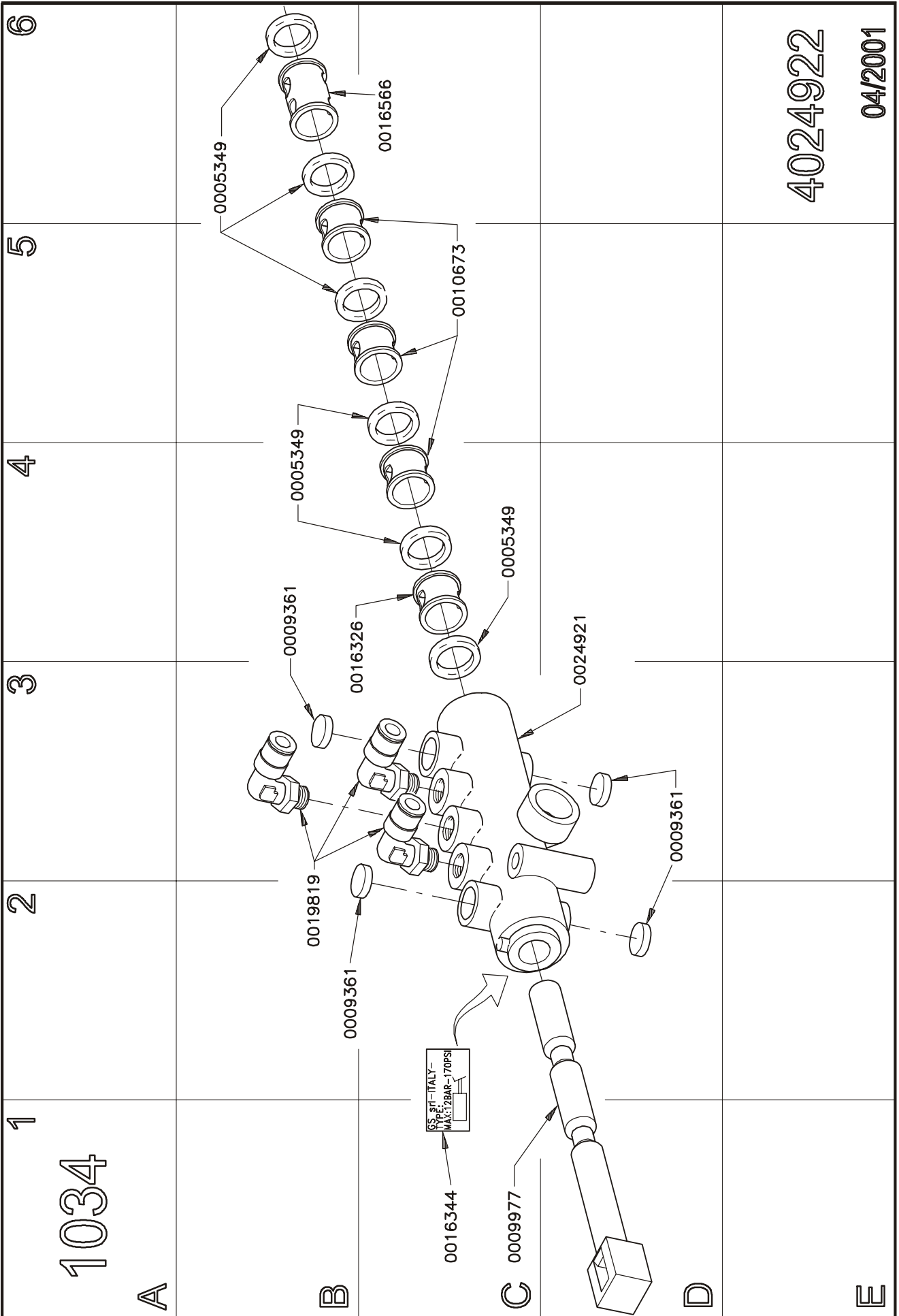


182-c-April-05



4017256

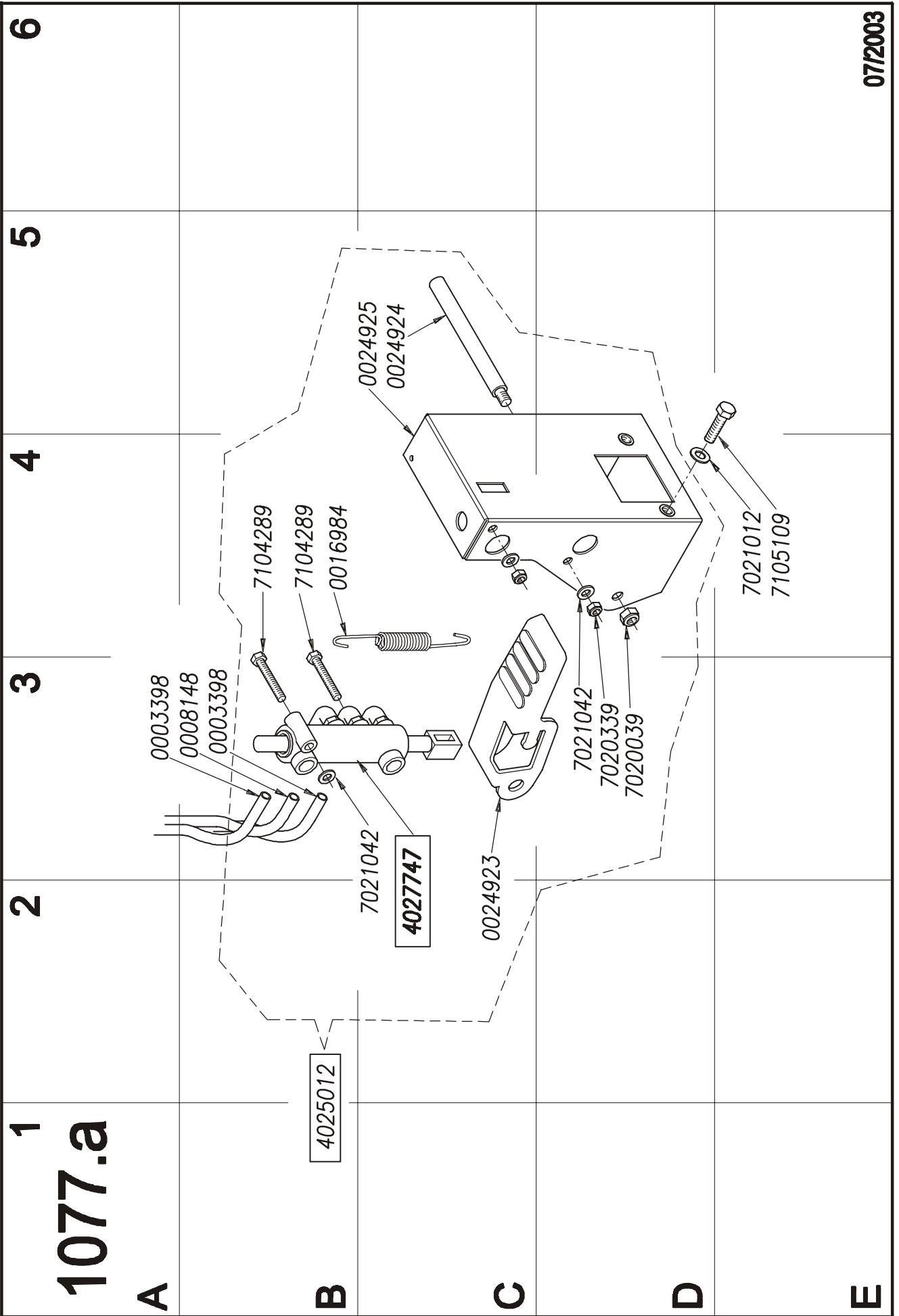
08/2000

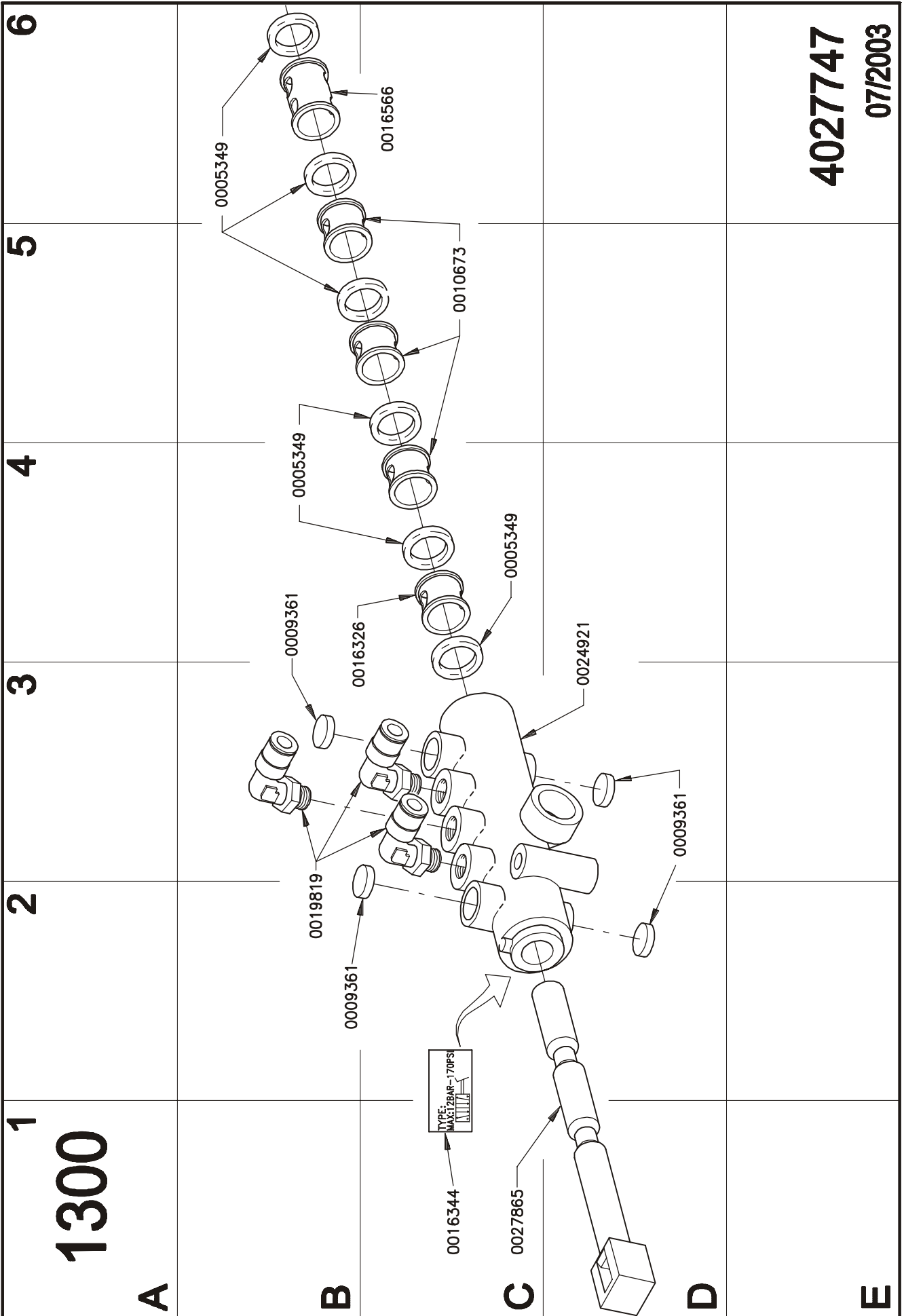


182-s-April-05



182-c-April-05

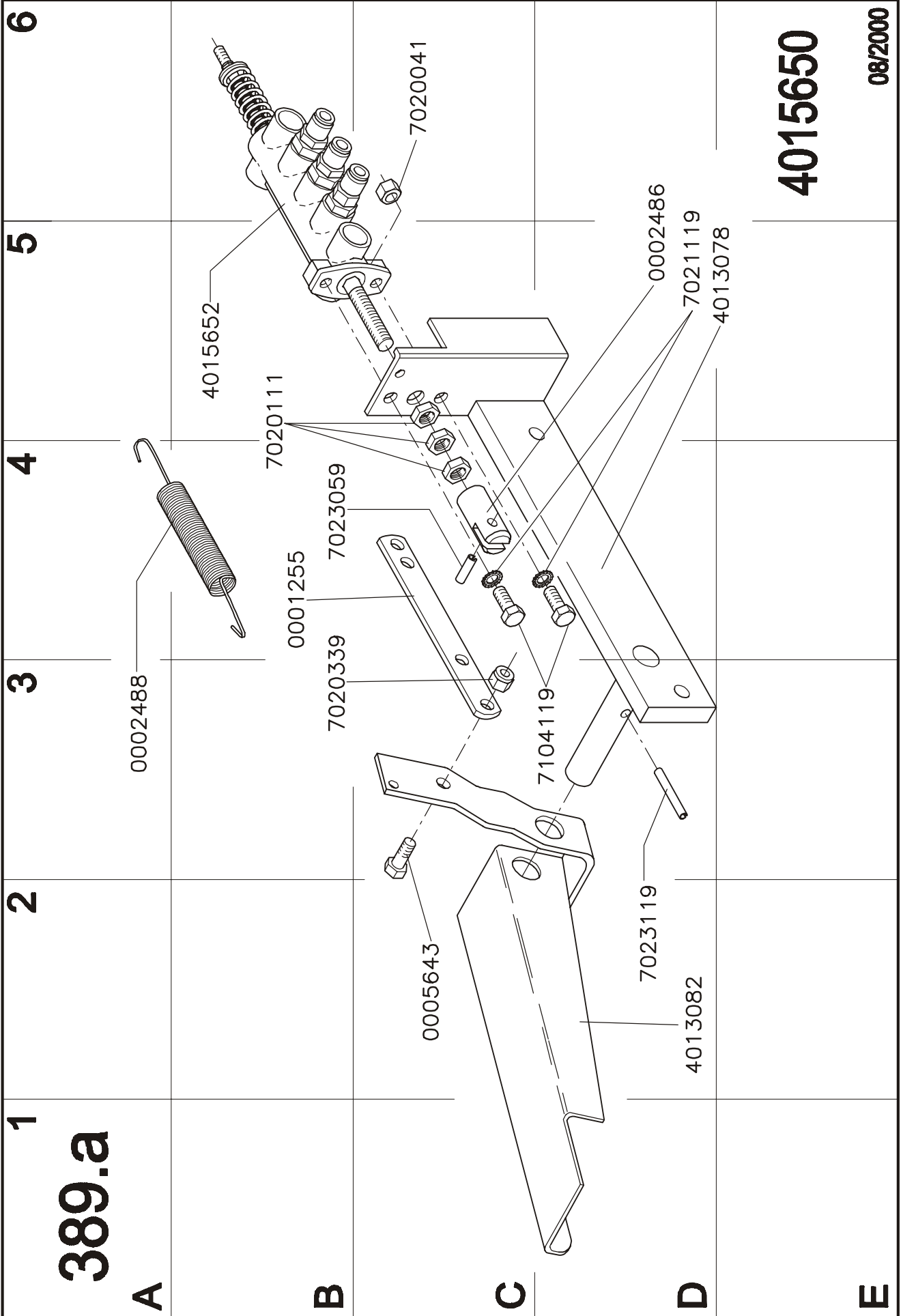




182-s-April-05



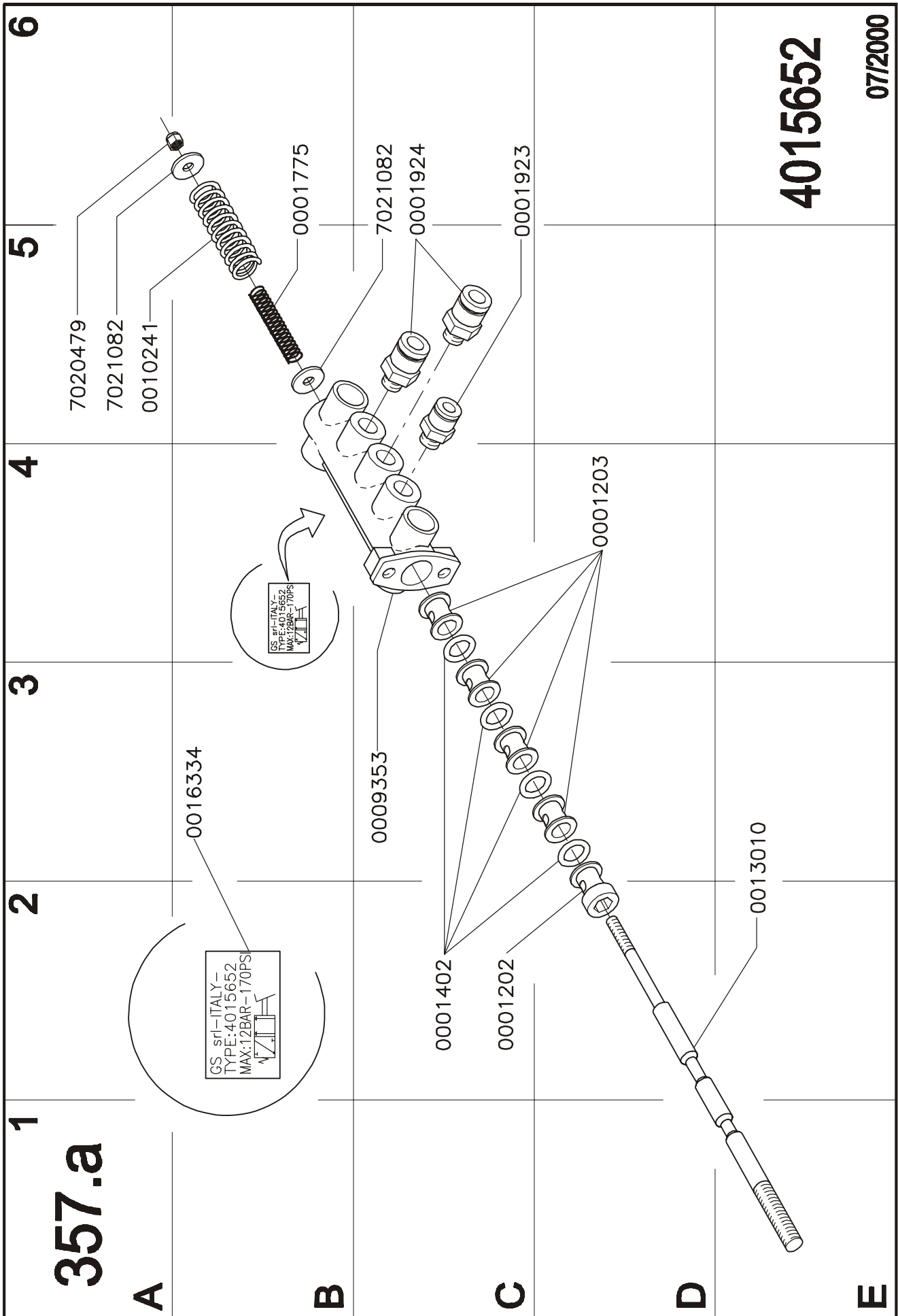
182-c-April-05



4015650

08/2000

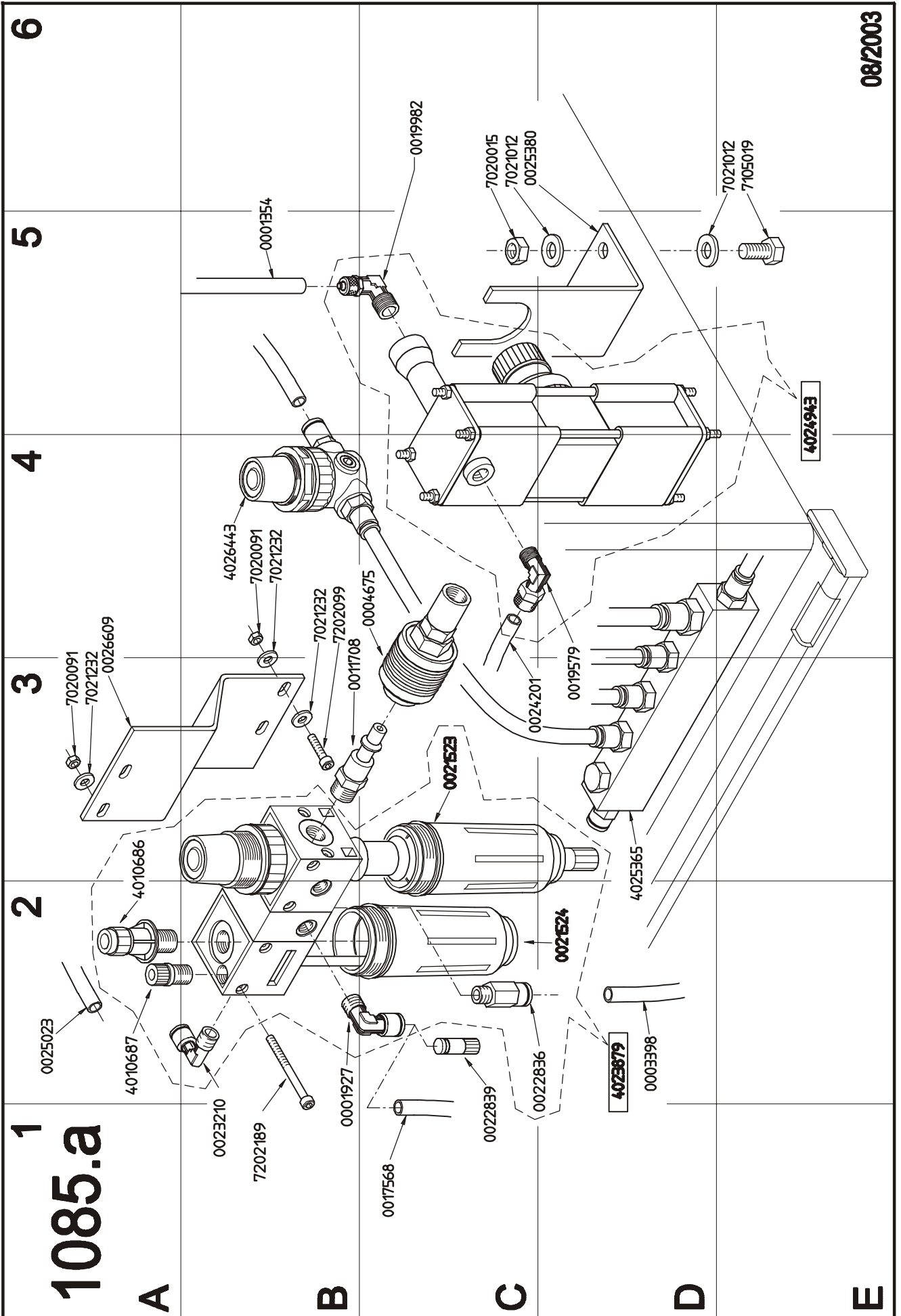
389.a



182-s-April-05

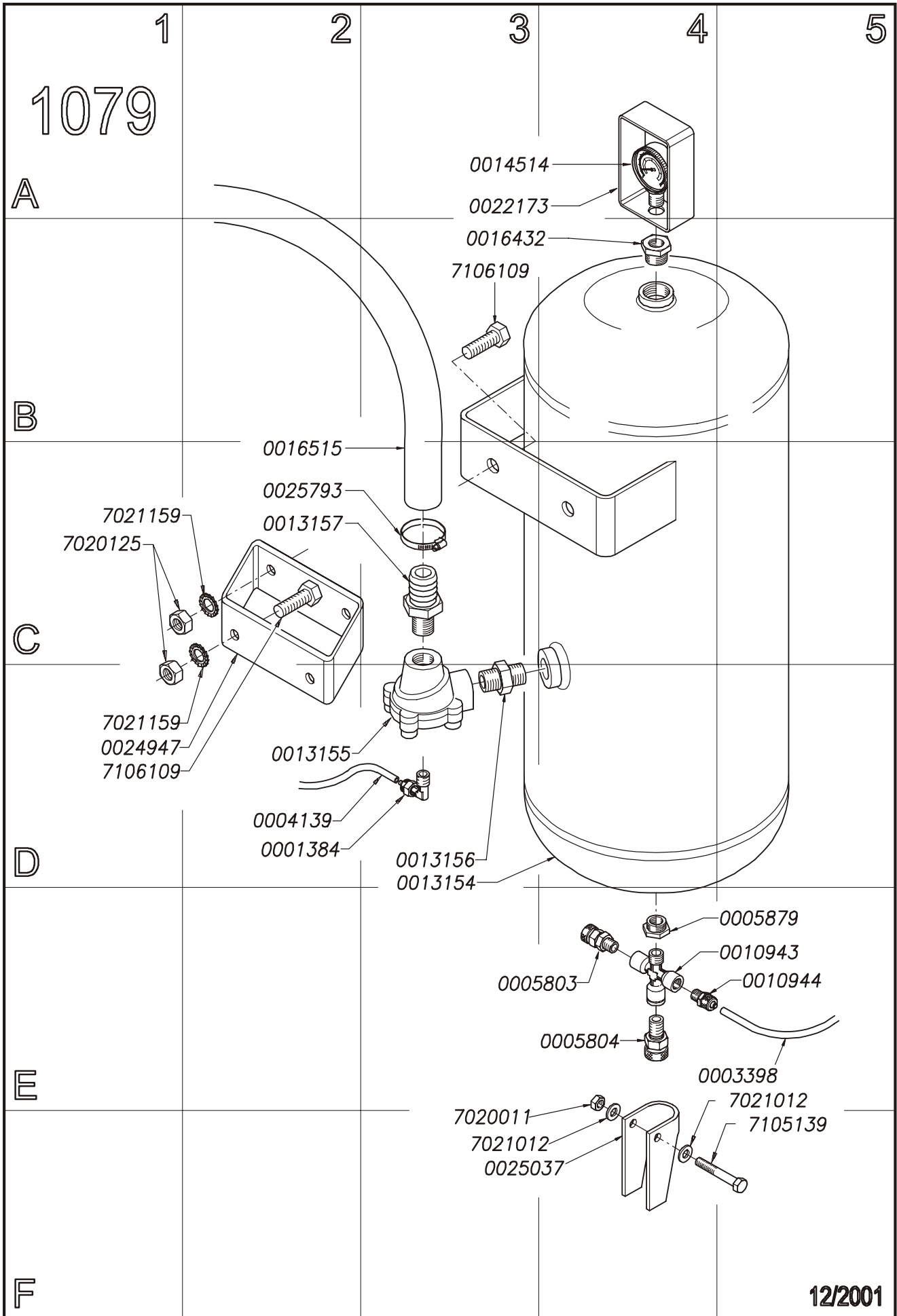


182-c-April-05



08/2003

1085.a

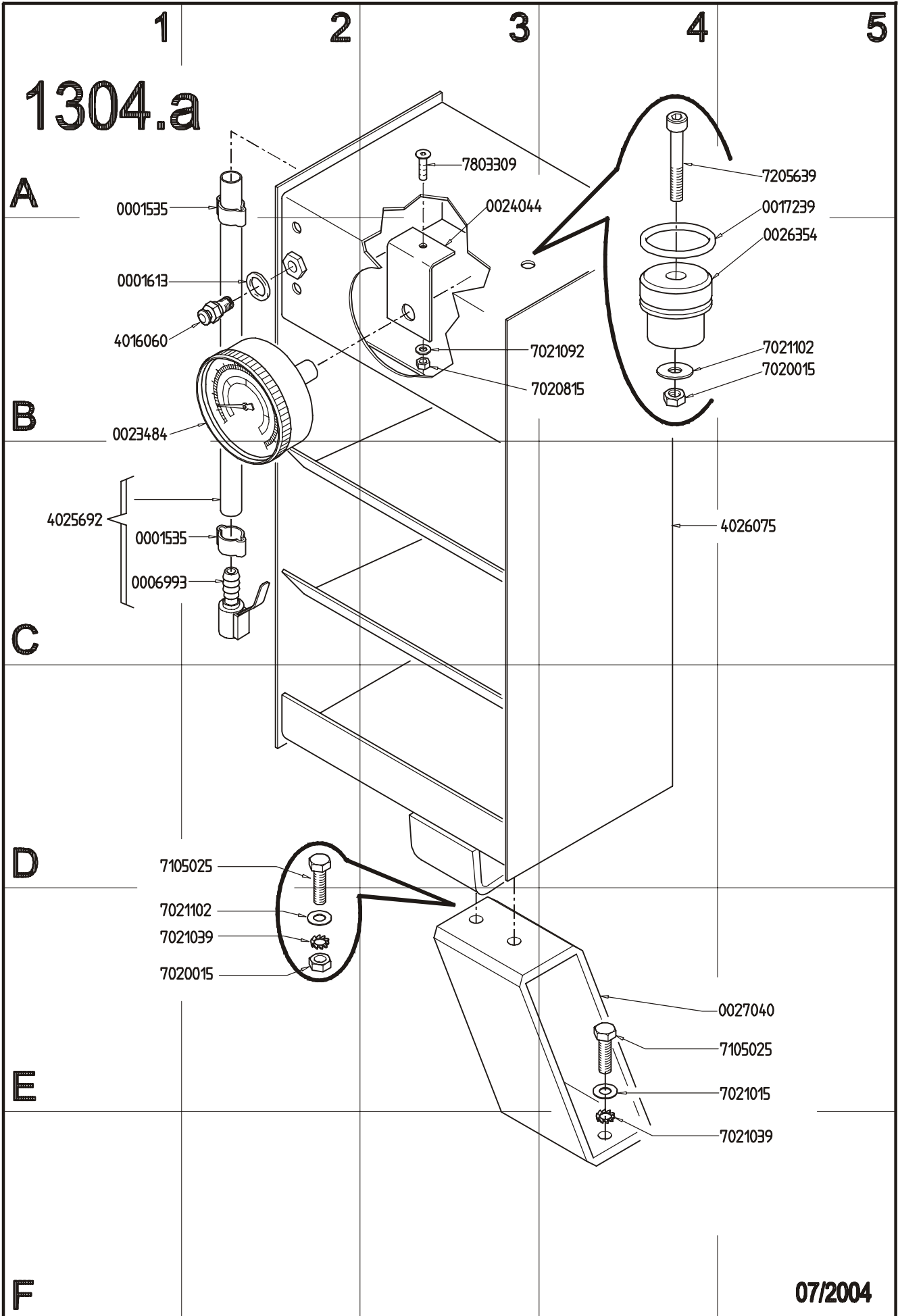


182-c-April-05

12/2001







182-c-April-05

07/2004







182-c-April-05

51 52	1 1	TUBO FLESSIBILE SCHLAUCH FLEXIBLE TUYAU FLEXIBLE	MAZZER MAT. PLASTICHE	87	TUBO FLESSIBILE SCHLAUCH FLEXIBLE TUYAU FLEXIBLE	DEALCARBUR WP. 10 BAR	MANULI
4.8	1	CILINDRO A SEMPLICE EFFETTO EINFACH WIRKENDE ZYLINDER VERIN A SIMPLE EFFET CILINDER AT SIMPLE EFFECT	GS	86	VALVOLA A 5 VIE FUNSETTIGE VENTIL VANNE A 5 VOIES	1' AF 25500	KPM
4.6	1	REGOLATORE DI VANNA VANNE REGULATOR REGULATEUR DE DEBIT GESCHALTETES STROVREGELVENTIL	CAMOZZI AZ PNEUMATICA	85	MANOMETRO MANOMETRE MANOMETRE		AIREX
4.4	1	ROLLOTTORI REDUCTOR REDUCTEUR	STAMPOTECNICA	83	SERRATOIO TANK RESVOR		GS
4.1 4.3 4.7	1 1 1	TUBO FLESSIBILE SCHLAUCH FLEXIBLE TUYAU FLEXIBLE	MAZZER MAT. PLASTICHE	82	VALVOLA DI SICUREZZA SICHERHEITSVENTIL SECURITE VALVE		STIMA
3.5	1	DOPPIO TRAKKENDER ZYLINDER VERIN A DOUBLE EFFET CILINDER AT DOUBLE EFFECT	GS	81 84 88	TUBO FLESSIBILE SCHLAUCH FLEXIBLE TUYAU FLEXIBLE		MAZZER MAT. PLASTICHE
3.2	1	VALVOLA A 5 VIE FUNSETTIGE VENTIL VANNE A 5 VOIES	GS	78	SCHLAUCH FLEXIBLE TUYAU FLEXIBLE	IDEAL W.P. 20 BAR ISO R 1307	MANULI
3.1 3.3 3.4	1 1 1	TUBO FLESSIBILE SCHLAUCH FLEXIBLE TUYAU FLEXIBLE	MAZZER MAT. PLASTICHE	77	VALVOLA A 2 VIE ZWEISEITIGE VENTIL VANNE A 2 VOIES		GS
2.7 2.8	1 1	CILINDRO A DOPPIO EFFETTO DOPPELTRAKKENDER ZYLINDER VERIN A DOUBLE EFFET CILINDER AT DOUBLE EFFECT	GS	76	MANOMETRO MANOMETRE MANOMETRE		MIKA O GAV
2.2	1	VALVOLA A 5 VIE FUNSETTIGE VENTIL VANNE A 5 VOIES	GS	74	AR CONTROL		GS
2.1 2.3 2.4	1 1 1	TUBO FLESSIBILE SCHLAUCH FLEXIBLE TUYAU FLEXIBLE	MAZZER MAT. PLASTICHE	72	VALVOLA A 4 VIE VIERSEITIGE VENTIL VANNE A 4 VOIES		GS
1.5	1	CILINDRO A DOPPIO EFFETTO DOPPELTRAKKENDER ZYLINDER VERIN A DOUBLE EFFET CILINDER AT DOUBLE EFFECT	GS	71 72 73	TUBO FLESSIBILE SCHLAUCH FLEXIBLE TUYAU FLEXIBLE		MAZZER MAT. PLASTICHE
1.2	1	VALVOLA A 5 VIE FUNSETTIGE VENTIL VANNE A 5 VOIES	GS	64	CILINDRO A SEMPLICE EFFETTO EINFACH WIRKENDE ZYLINDER VERIN A SIMPLE EFFET CILINDER AT SIMPLE EFFECT		GS
1.1 1.3 1.4	1 1 1	TUBO FLESSIBILE SCHLAUCH FLEXIBLE TUYAU FLEXIBLE	MAZZER MAT. PLASTICHE	62	VALVOLA A 3 VIE DREISEITIGE VENTIL VANNE A 3 VOIES		GS
0.2	1	LUBRIFICATORE SCHMIERVORRICHTUNG LUBRIFIANT	STAMPOTECNICA	61 63	TUBO FLESSIBILE SCHLAUCH FLEXIBLE TUYAU FLEXIBLE		MAZZER MAT. PLASTICHE
0.1	1	FILTRO • RIDUTTORE FILTER • REDUKTOR FILTER • REDUCER	STAMPOTECNICA	53 54	CILINDRO A SEMPLICE EFFETTO EINFACH WIRKENDE ZYLINDER VERIN A SIMPLE EFFET CILINDER AT SIMPLE EFFECT		GS
POS. 0.1 0.2 0.3	0.1 0.2 0.3	DENOMINAZIONE BENENNUNG DESCRIPTION	PRODUTTORE/FORNITORE BESTELLER/LIEFERANT PRODUCER /SUPPLIER	POS.	DENOMINAZIONE BENENNUNG DESCRIPTION	SIGLA E NORMA UND NENNBENZEICHUNG REF. AND NORM	PRODUTTORE/FORNITORE BESTELLER/LIEFERANT PRODUCER /SUPPLIER
				CONTRUITO IN FABRIQUE EN	FIRMA GEZ. SIGNATURE	DENOMINAZIONE BENENNUNG DESCRIPTION	PAGINA N. PAGINE BLATT N. BLÄTTER PAGE N. OF PAGES
			ITALY	BARIGAZZI	CLIENTE BESTELLER CUSTOMER		GRUPPO GRUPPE GROUP
			TYP MODEL	22LX	NF. ORDINE AUFTRAG-NF. P.D. NUMBER		2
			CODICE MACCHINA INVENTAR N. MACHINE REF. CODE MACHINE	2002-01-07			2
			DATA DATUM DATE				
			MODIFICA ÄNDERUNG MODIFICATION				
			CHANGE				
Nr.							FAMIGLIA CODE 824
							CODICE N. ZEICHNUNGS N. CODE N. 0027115
							LISTA COMPONENTI PNEUMATICI LISTE BESTANDTEILE PNEUMATISCHEN LISTE COMPOSANTS PNEUMATIQUES LIST OF PNEUMATIC COMPONENTS





From Revision B:

Jan. 2005

at page 17

TABLE 390.b

has been replaced

with TABLE 390.c

From **Revision C:**

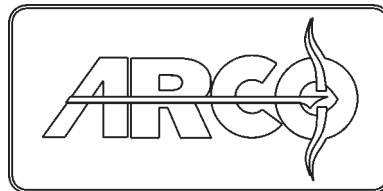
Apr. 2005

at page 6

TABLE 1202.b

has been replaced

with TABLE **1202.c**



Revision: C

P/N: TEEWH909A3