



---

SPARE PARTS LIST

**PRO 20 12V**  
**PRO 20 GT**

Electro-Pneumatic Tire Changer

**BOXER SWING PRO 20**

- **All'ordine specificare:** tipo macchina e matricola, codice e quantità del particolare.
- **On order specify:** type of machine and serial number item code and quantity.
- **Bei Auftragserteilung anzugeben:** Maschinentype, Serinnummer, Artikel-Code, Menge.
- **A la commande:** bien préciser le type de la machine, le n° de serie, la référence de pièce, la quantité.
- **En cada pedido hay que especificar:** el tipo de máquina y su número de matrícula, el número de código de la pieza requerida y su cantidad.
- **Na encomenda especifique:** tipo da máquina e número de série, código do item e quantidade.
- **Specificeer op een order:** machine type en serienummer, artikelnummer en aantal.
- **Vid order specificera:** Maskin typ och serie nr reservdels nr ochantal.



135-b-July-03

**QUESTA PARTE È AD USO ESCLUSIVO DEL PERSONALE QUALIFICATO ED AUTORIZZATO ALLA MANUTENZIONE ED ASSISTENZA.**

**DIESER ABSCHNITT IST AUSSCHLIESSLICH DEM WARTUNGSFACH-UND KUNDENDIENSTPERSONAL VORBEHALTEN**

**ESTA PARTE ES PARA USO EXCLUSIVO DEL PERSONAL CALIFICADO Y AUTORIZADO PARA EL MANTENIMIENTO Y LA ASISTENCIA.**

**ESTA PARTE ES PARA USO EXCLUSIVO POR PESSOAL ESPECIALIZADO ED AUTORIZADO A LA MANUTENÇÃO**

**DENNE DEL ER BEREGNET TIL BRUK FOR KVALIFISERT PERSONALE FOR VEDLIKEHOLD OG SERVICE**

**DENNA DEL ÄREN BART TILL FÖR UTBILDAD PERSONAL VID UNDERHÅLLS- OCH SERVICEARBETEN**

**THIS PART IS FOR EXCLUSIVE USE OF QUALIFIED PERSONNEL FOR MAINTENANCE AND SERVICE PURPOSES.**

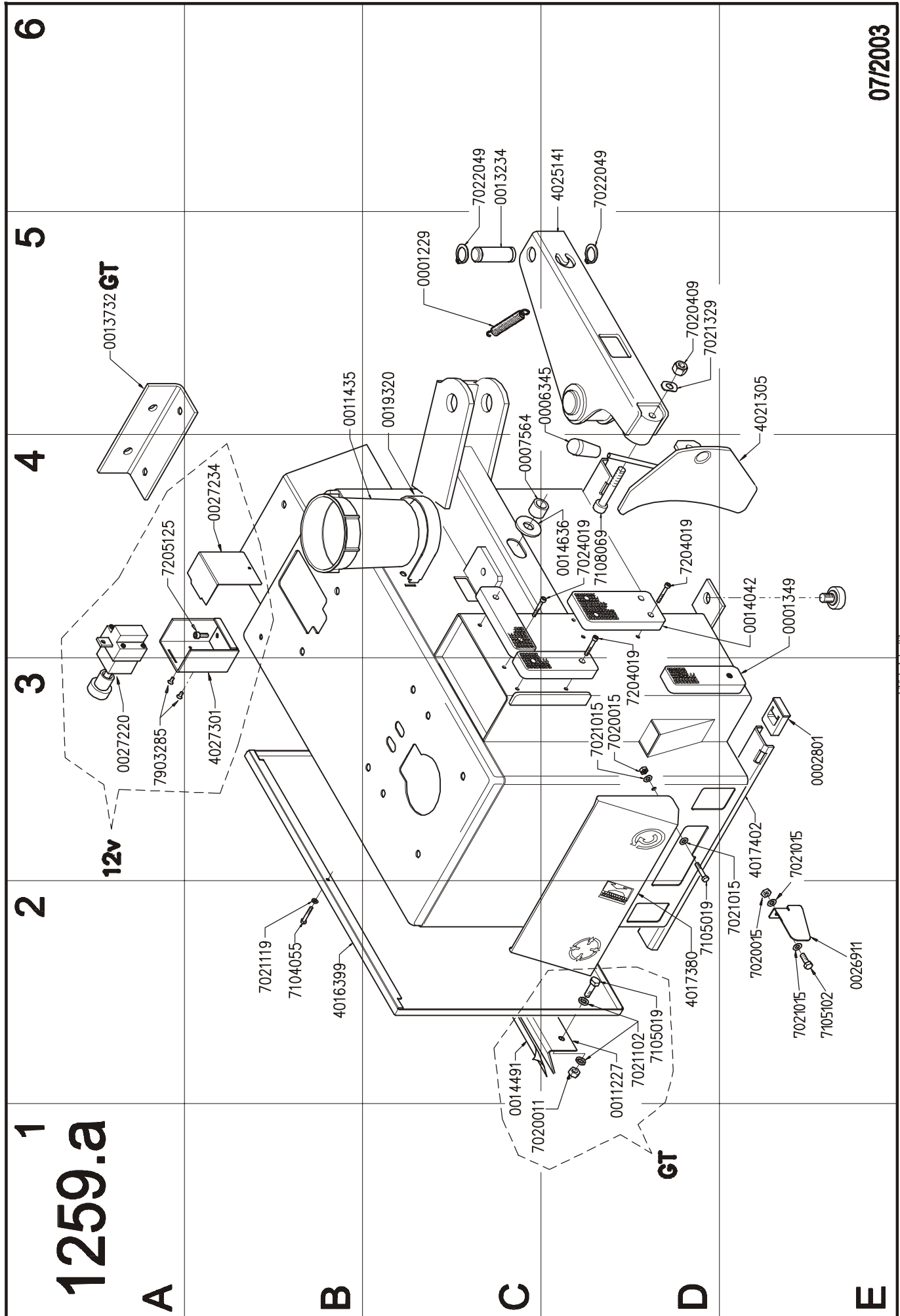
**CETTE PARTIE EST RESERVEE AU PERSONNEL QUALIFIE ET AUTORISE A LA MAINTENANCE ET AU SERVICE APRES-VENTE.**

**TÄMÄ OSA ON TARKOITETTU AINOASTAAN VALTUUTETUN HUOLTOHENKILÖSTÖN KÄYTTÖÖN HUOLTOTARKOITUKSIIN**

**DIT GEDEELTE IS ALLEEN BESTEMD VOOR BEVOEGDE PERSONEN VOOR ONDERHOUD EN SERVICE DOELEINDEN**

**DENNE DEL ER KUN BEREGNET TIL BRUG FOR FAGLÆRTE OG FOLK SOM ER KVALIFICERET OG AUTORISERET TIL VEDLIGEHODELSE OG SERVICE**

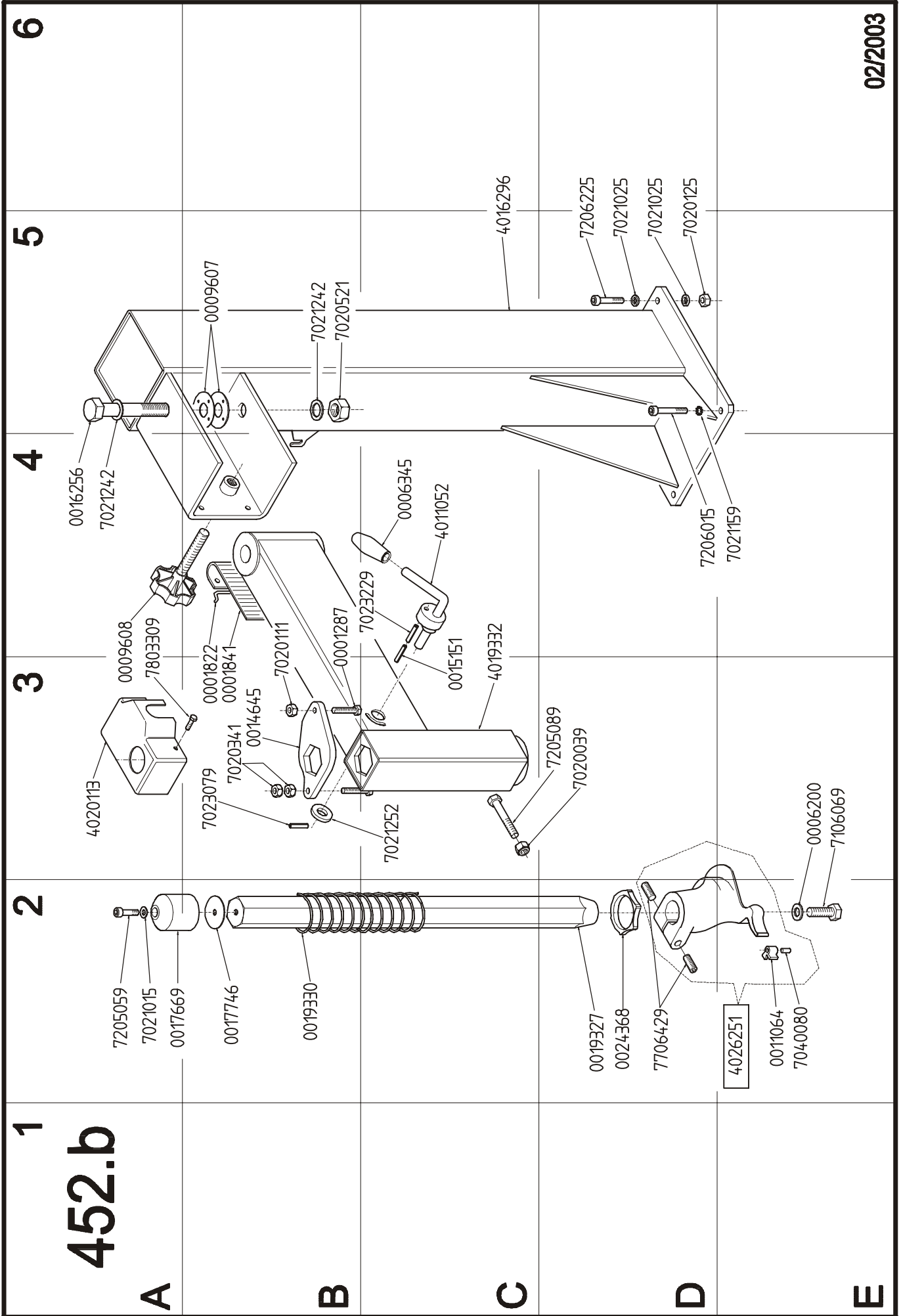
**AYTO TO MEPOS EINAI GIA THN AΠΟΚΛΕΙΣΤΙΚΗ ΧΡΗΣΗ ΕΚ ΜΕΡΟΥΣ ΕΞΟΥΣΙΟΛΟΤΗΜΕΝΟΥ ΙΚΑΝΟΥ ΠΡΟΣΩΠΙΚΟΥ ΓΙΑ ΕΡΓΑΣΙΕΣ ΣΥΝΤΗΡΗΣΗΣ ΚΑΙ ΕΠΙΣΚΕΥΗΣ**



135-6-July-03

07/2003

1.35-b-July-03

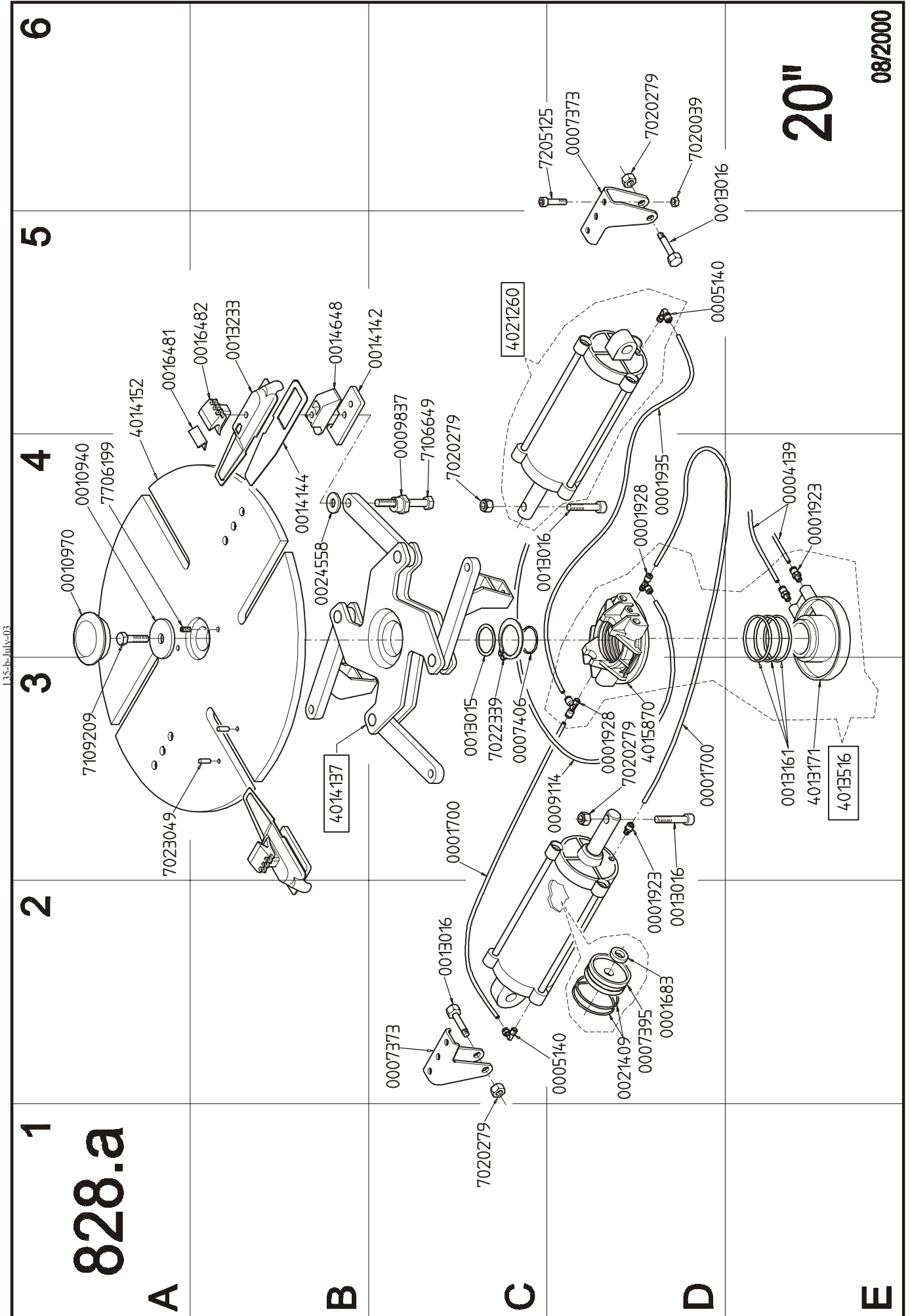


02/2003

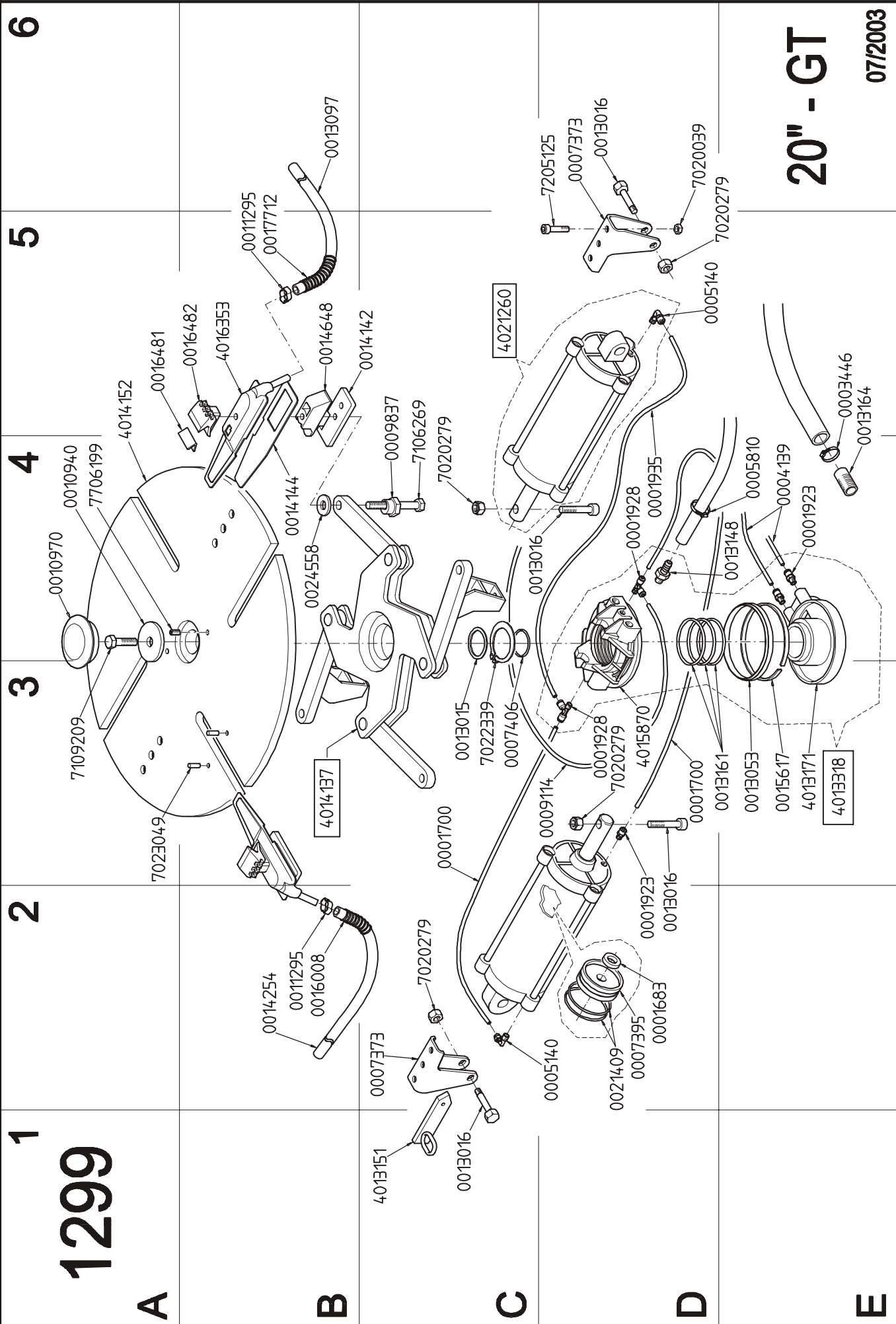


20"

08/2000



135-b-101v-03



6

5

4

3

2

1

**20" - GT**

**07/2003**

135-b-July-03



1.35-b-July-03

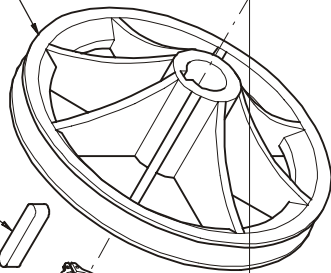
1

809.a

2

A

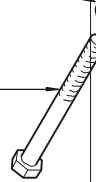
7025060



7022179

B

7104599



7025080

C

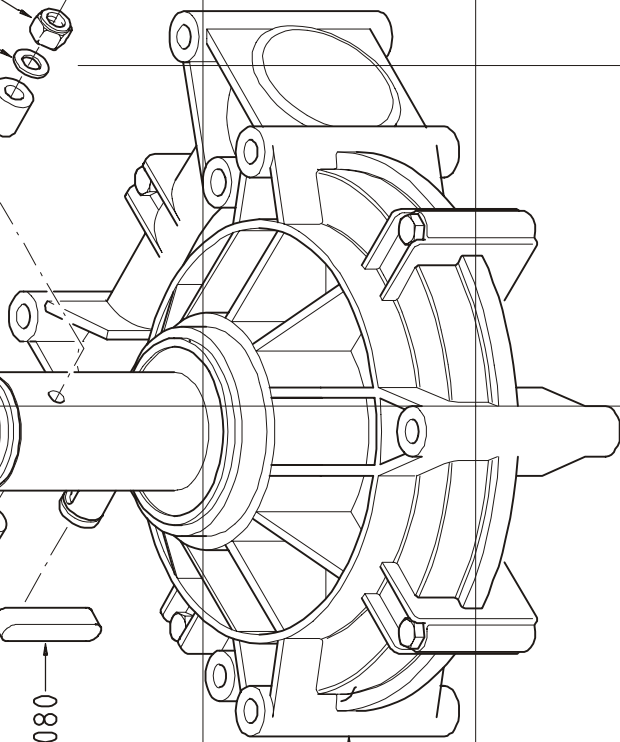
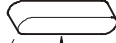
7021042

0013165

0013165

7021042

7020189



7106295

7021025

7021159

7020125

4-021047

D

3

{ 0018650 (3ph-0.75kW/1ph-115V)  
0004396 (1ph-230V) (12V)

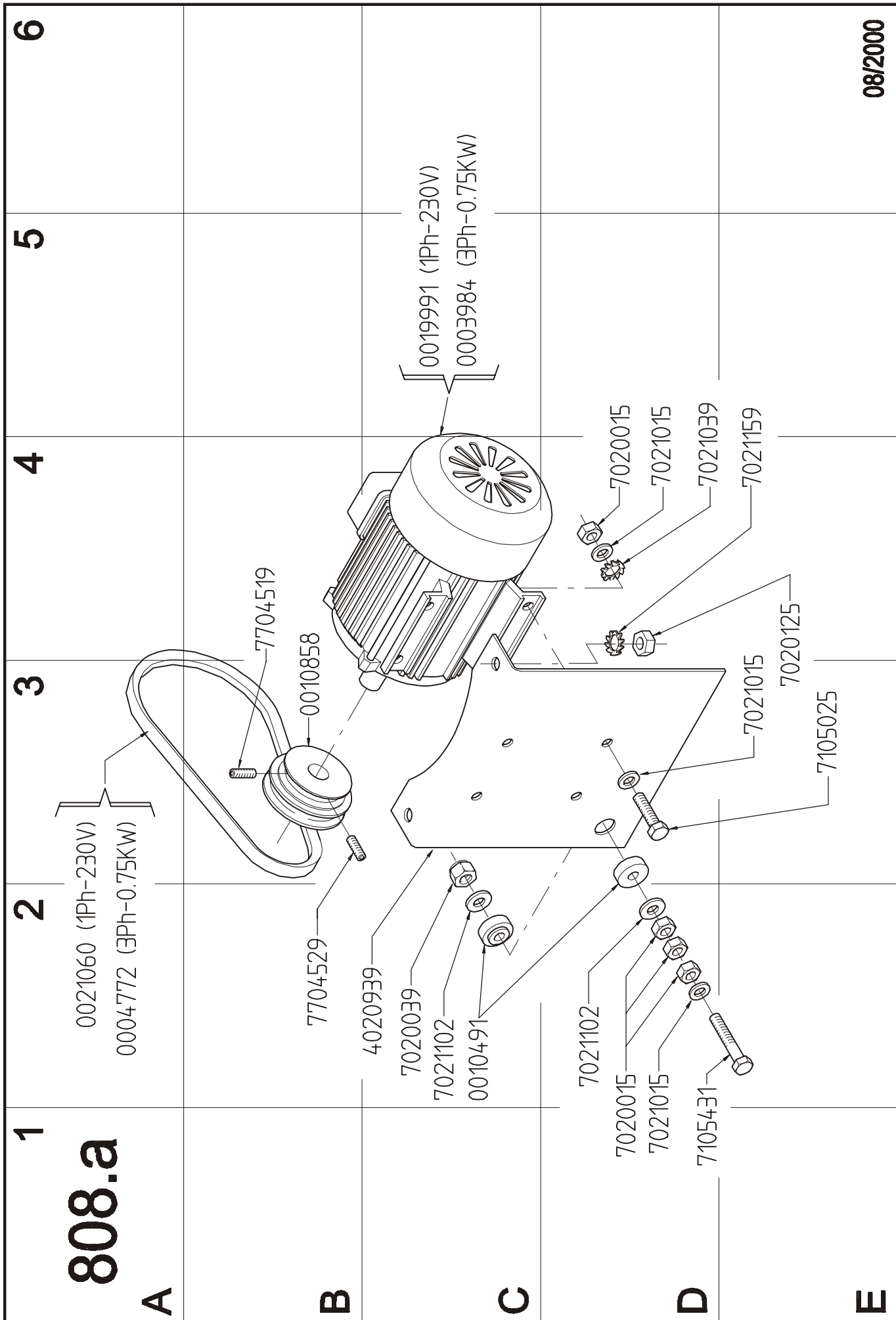
4

5

6

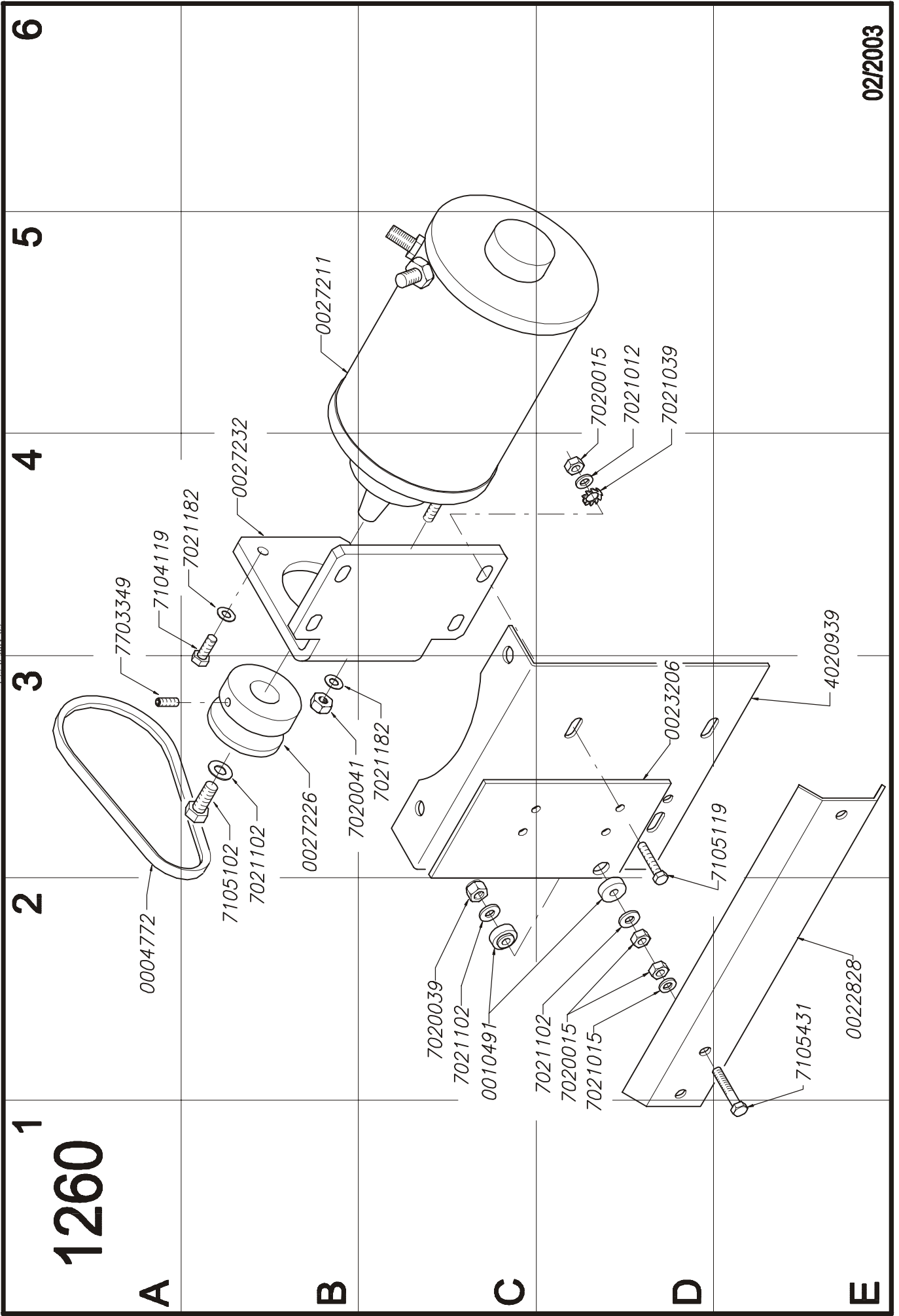
E

07/2003



135-b-July-03

135-b-1014v-03

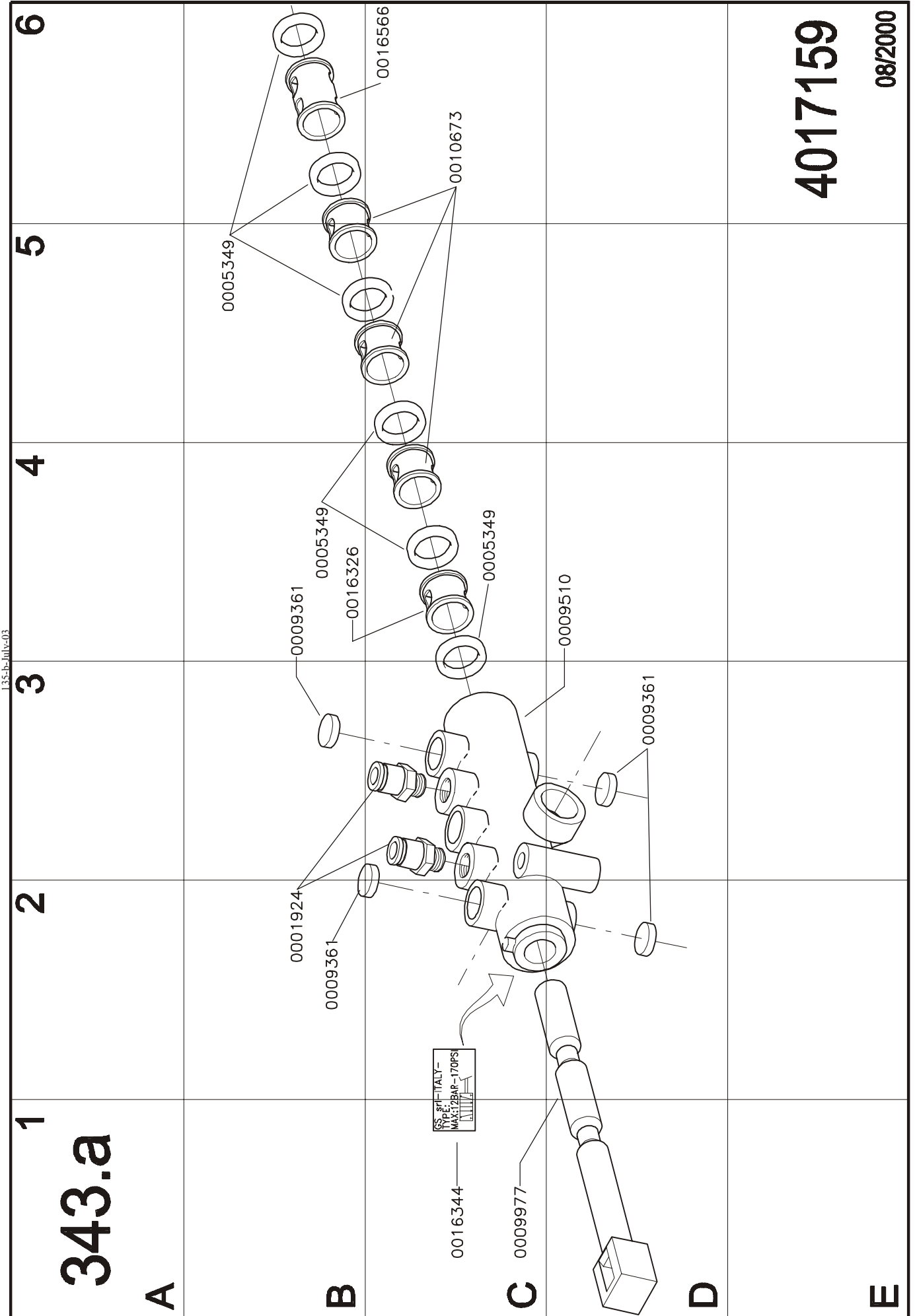


02/2003



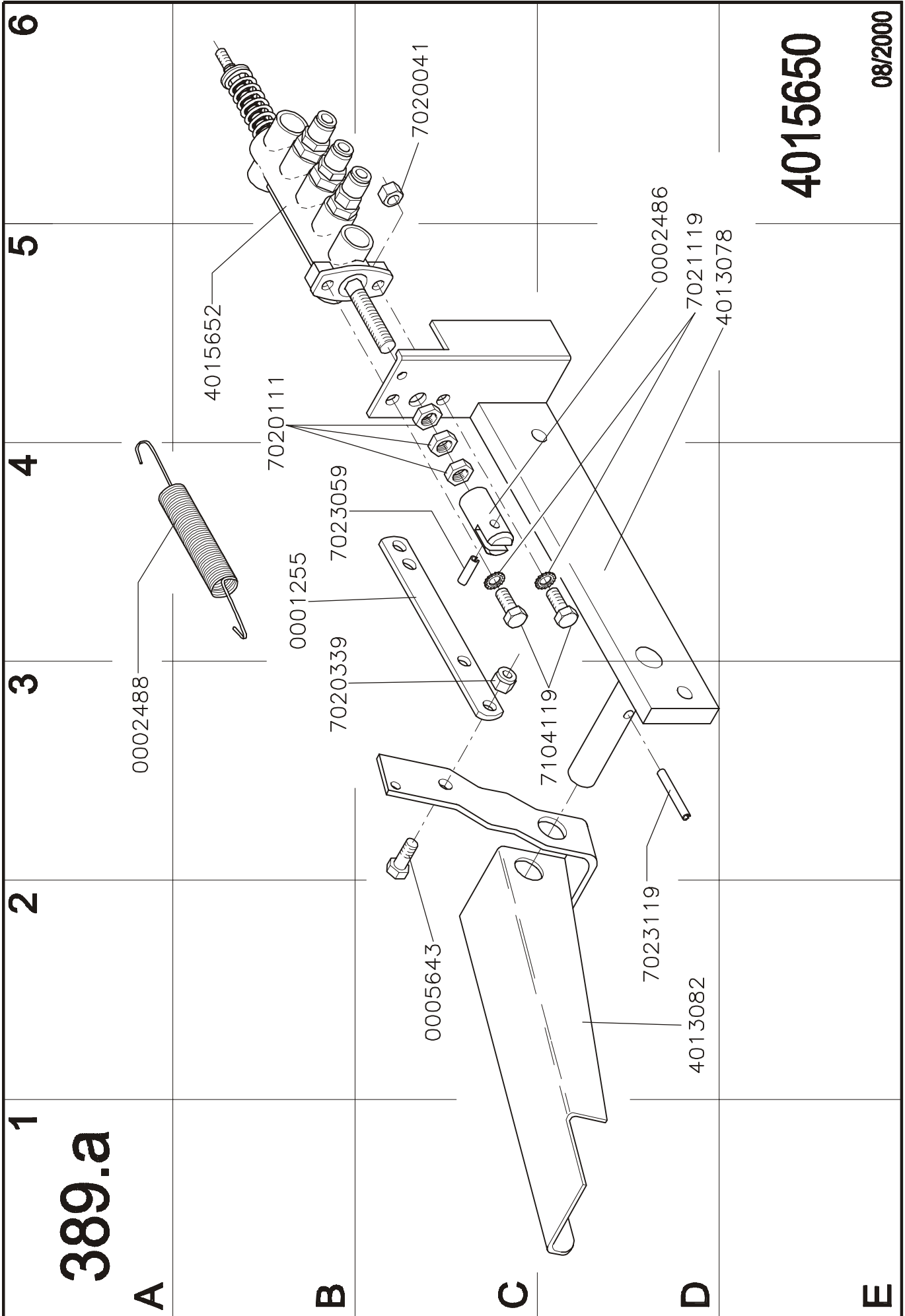






4017159

08/2000



6

5

4

3

2

1

389.a

A

B

C

D

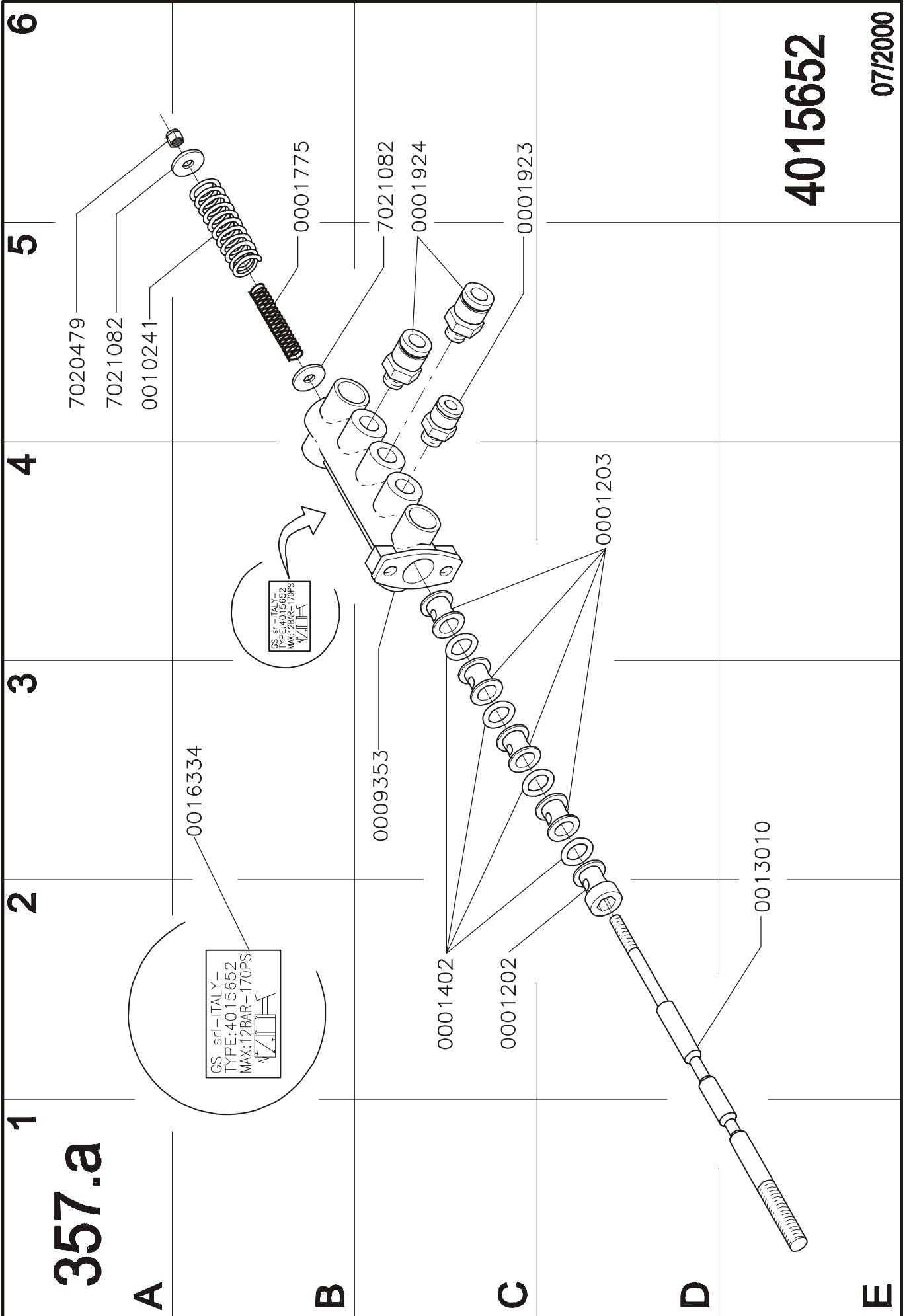
E

4015650

08/2000

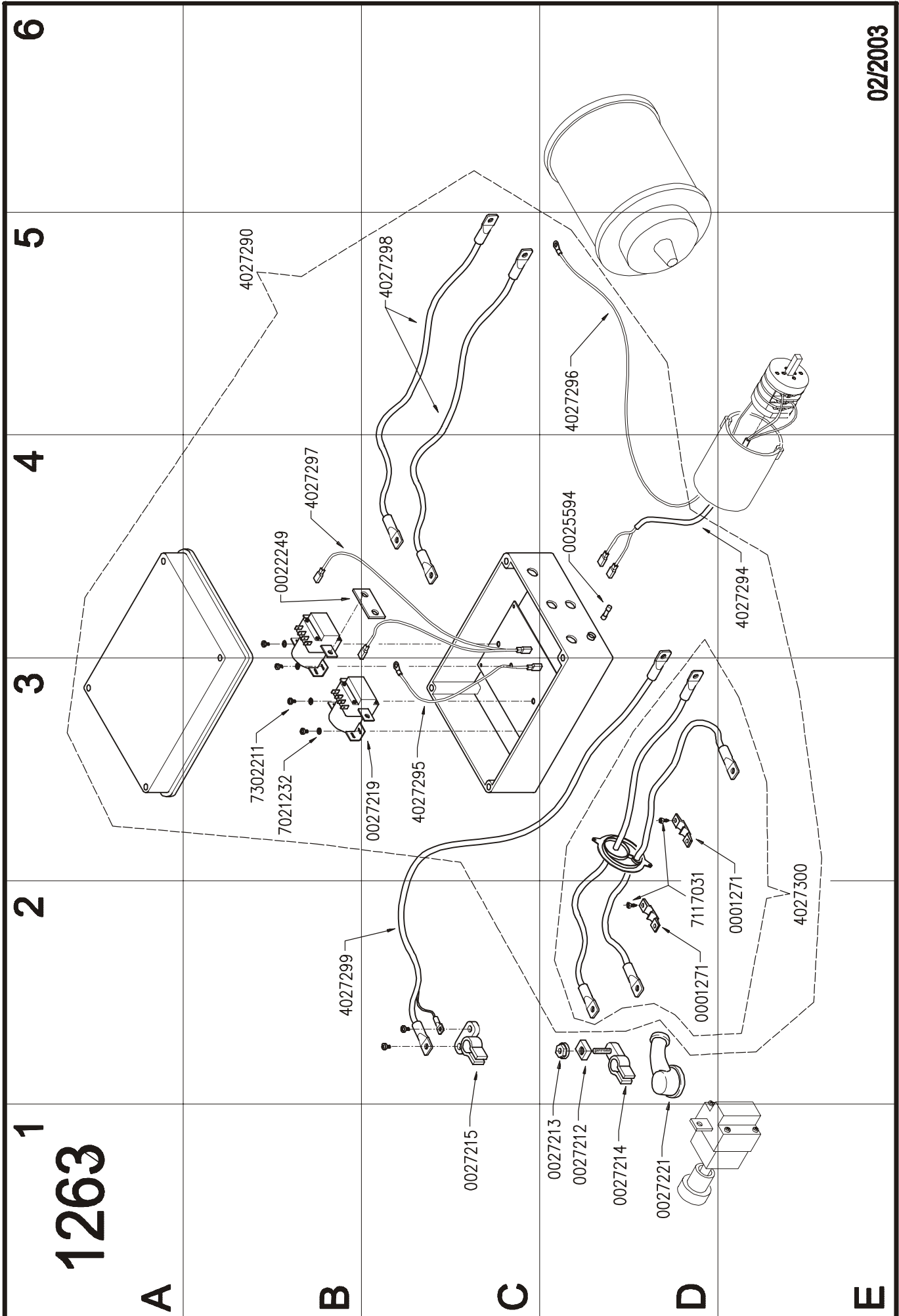


1.35-b-July-03



4015652

07/2000



6

5

4

3

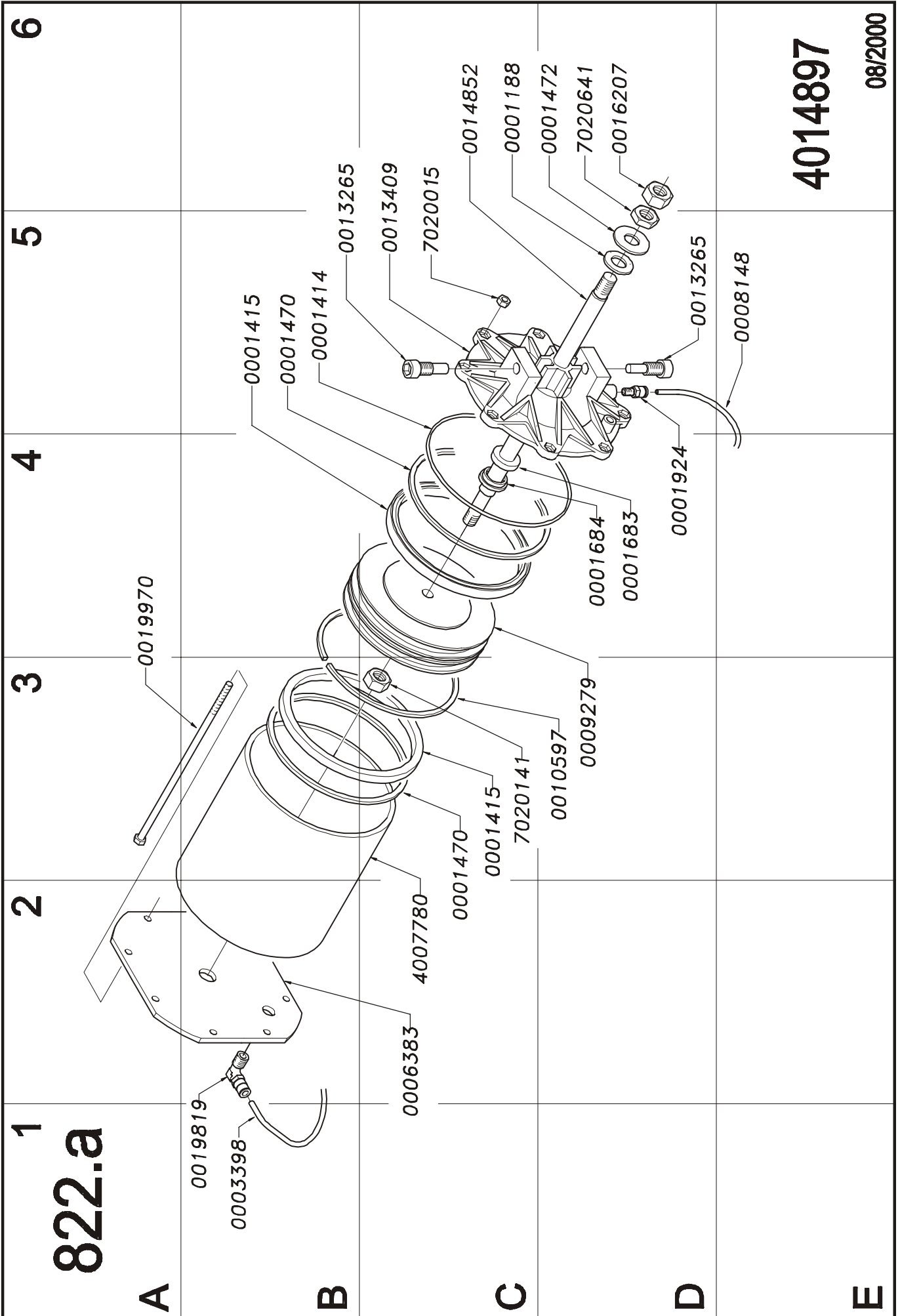
2

1

02/2003

135-b-July-03

1.35-b-July-03



1  
822.a

A

B

C

D

E

2

3

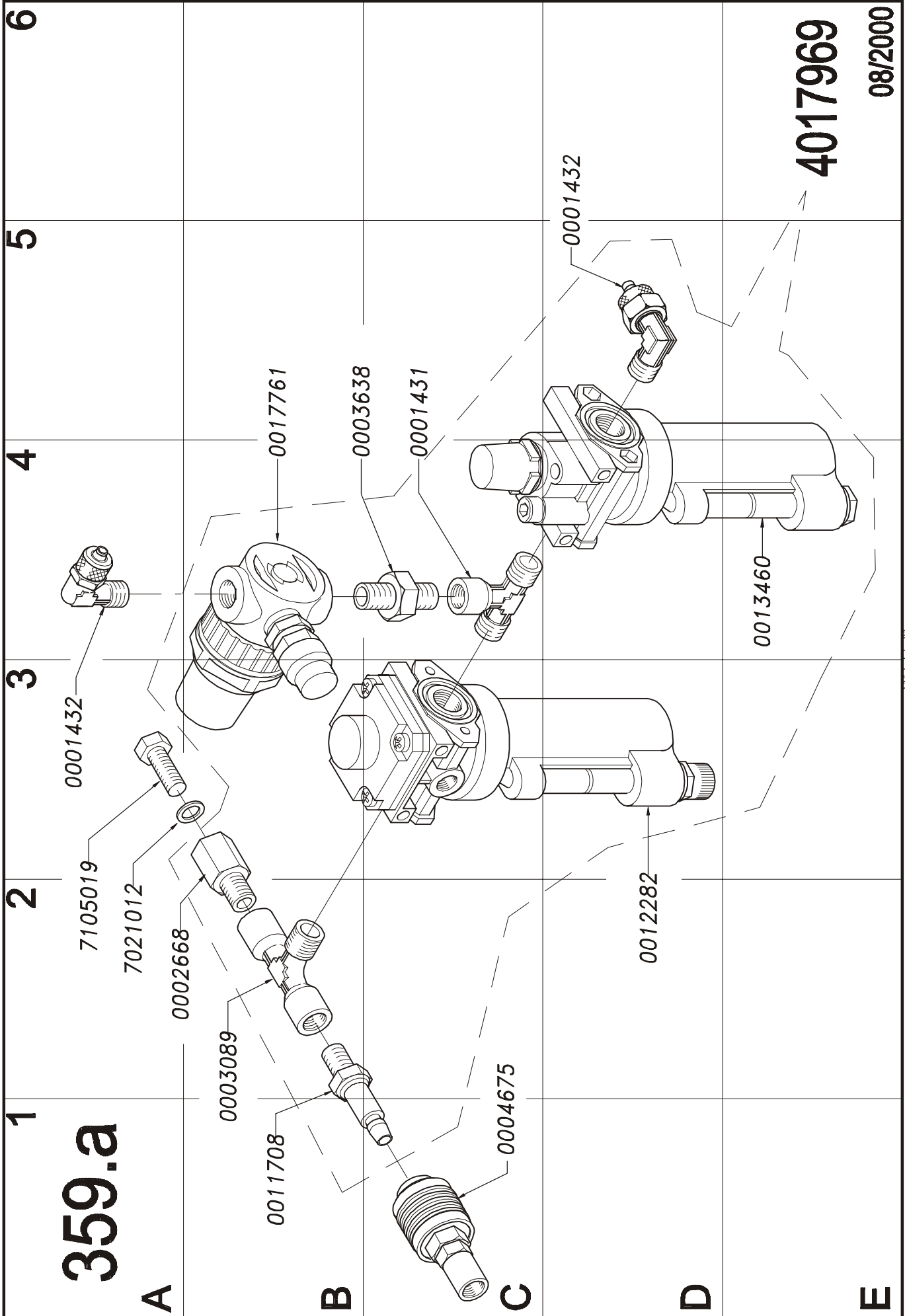
4

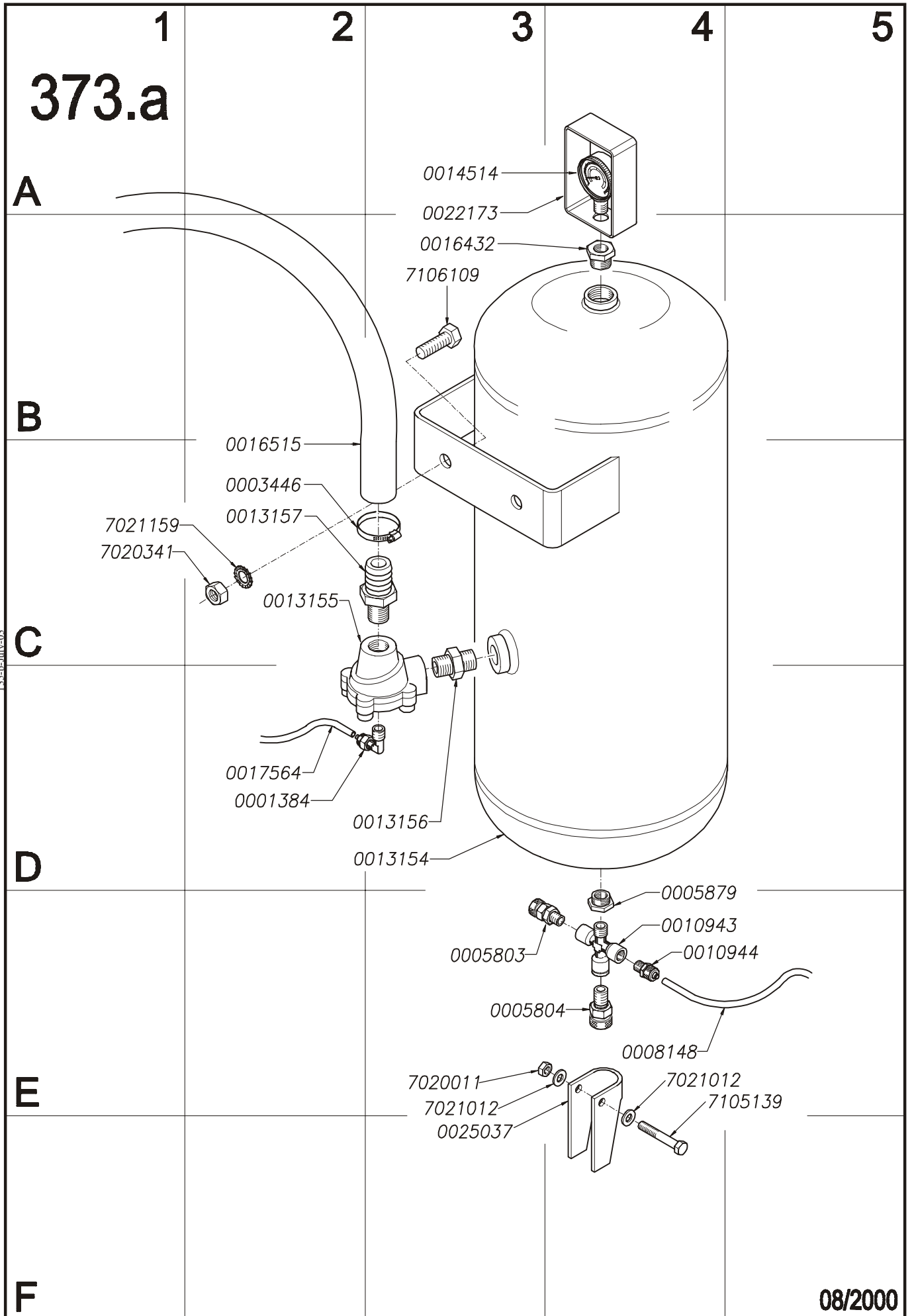
5

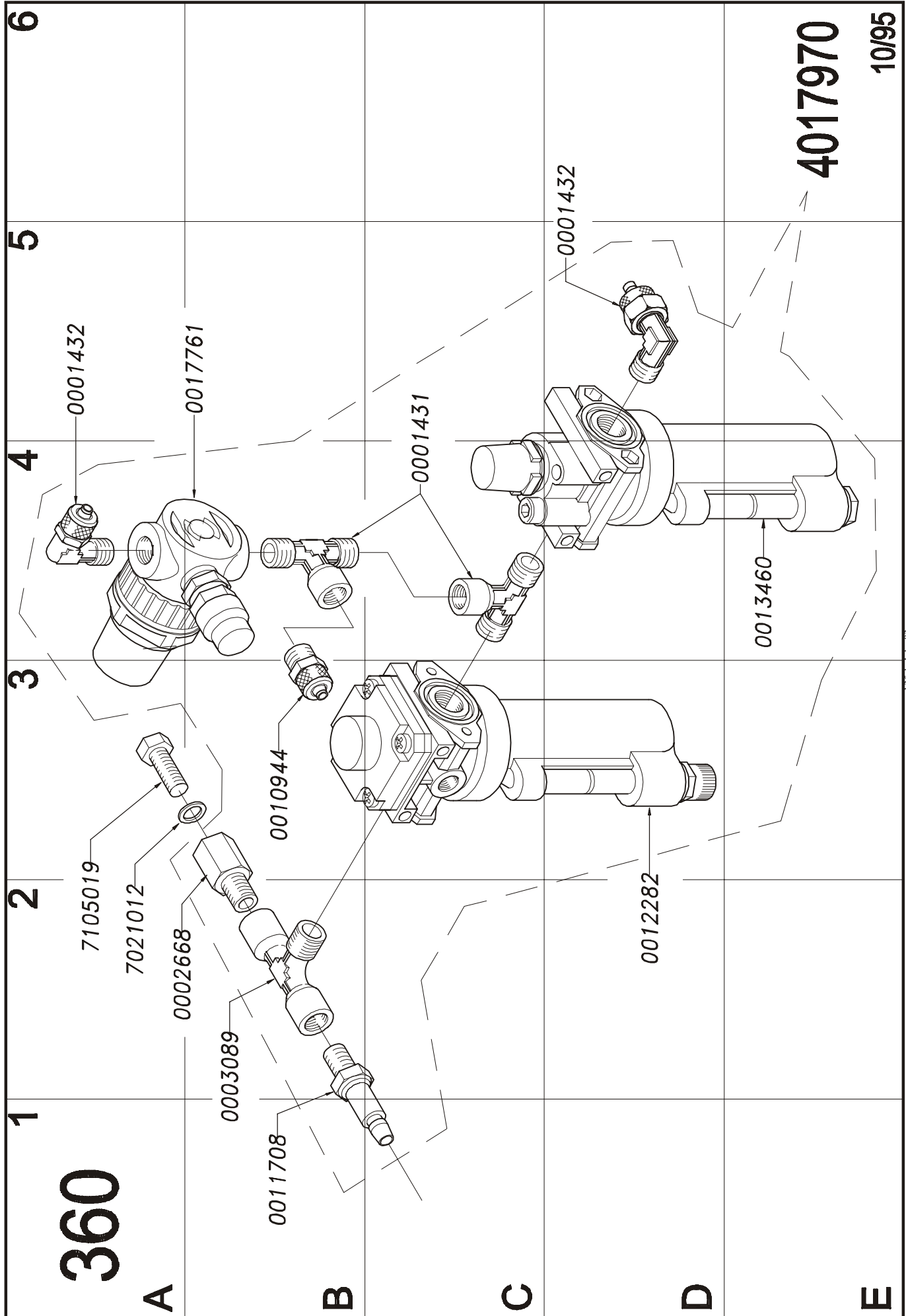
6

4014897

08/2000

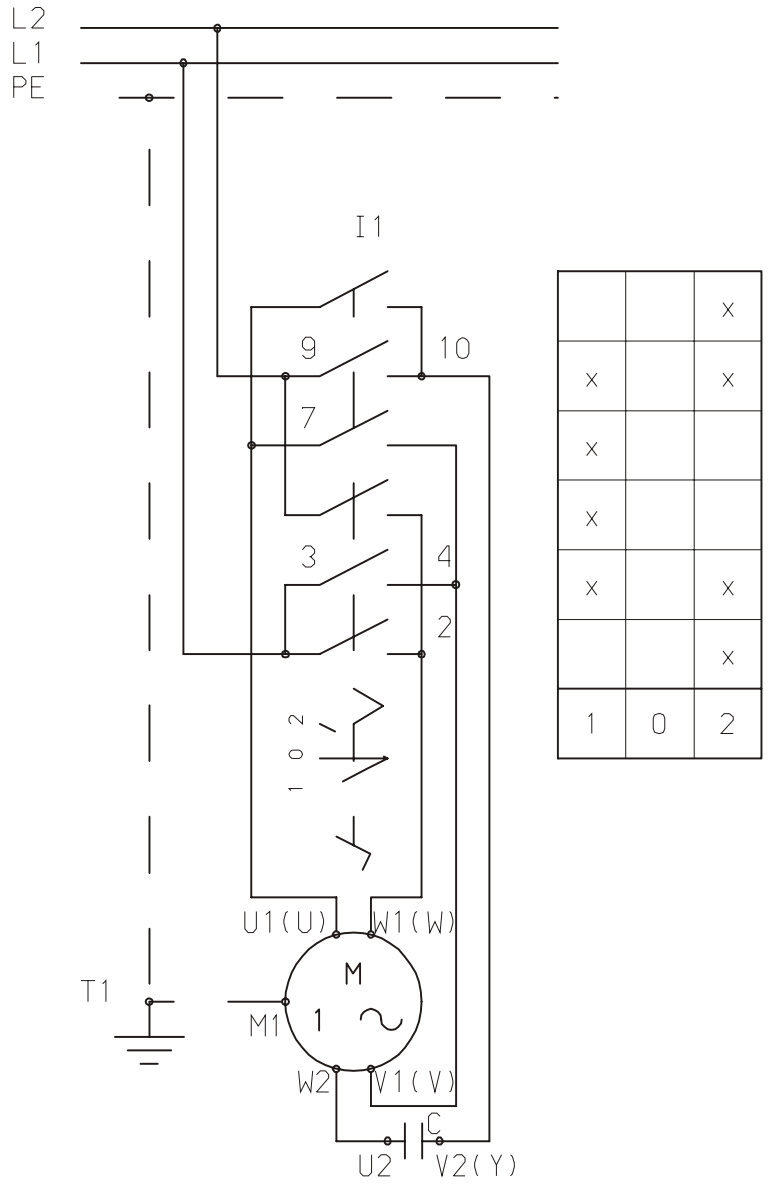






135-B-July-03





		x
x		x
x		
x		x
		x
1	0	2

C condensatore condensateur capacitor Kondensator  
 I1 invertitore inverseur reversing switch Wendeschalter  
 M1 motore moteur motor Motor  
 T1 carcassa chassis frame Gehaeuse

1	AGGIUNTO CONDENSATORE			16-06-92	N.C.	
Nr.	MODIFICA	AENDERUNG	MODIFICATION	CHANGE	DATA DATUM DATE	NOME NAME
FAMIGLIA	FRMA GEZ. SIGNATURE	CLIENTE BESTELLER CLIENT CUSTOMER		GRUPPO GRUPPE GROUPE GROUP	PAGINA BLATT PAGE	Nr. PAGINE V. BLATT Nr. DE PAGES Nr. OF PAGES
824	N.C.				1	1
TIPO TYP MODELE MODEL	DATA DATUM DATE	Nr. ORDINE COMMANDE Nr.	AUFTRAG-Nr. P.D.NUMBER			
EKO	13-07-88					
CODICE MACCHINA INVENTAR Nr. MACHINE REF. CODE MACHINE	VISTO GEPRUFT CONTROLLE PAR TESTED BY	SCHEMA ELETTRICO SMONTAGOMME MONOFASE		CODICE Nr. ZEICHNUNGS Nr. CODE Nr.		
				0009017		

135-B-July-03



CODIFICA NUMERICA INDUSTRIA AUTOMOBILISTICA EUROPEA

30= ALIMENTAZIONE PRINCIPALE (DAL POLO POSITIVO DELLA BATTERIA)

31= POLO NEGATIVO BATTERIA

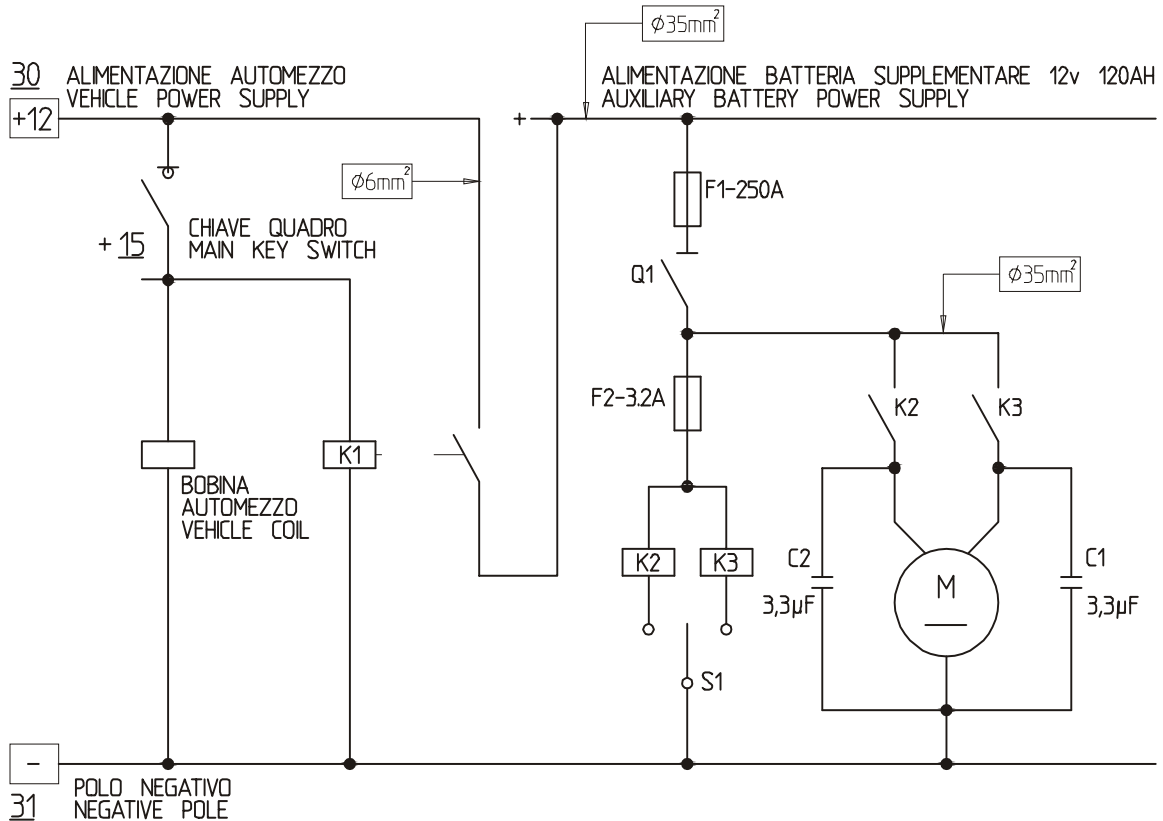
15= POSITIVO BATTERIA (SOTTO CHIAVE)

EUROPEAN AUTOMOTIVE INDUSTRY NUMERIC CODES

30= MAIN POWER SUPPLY (FROM POSITIVE VEHICLE BATTERY POLE)

31= NEGATIVE BATTERY POLE

15= POSITIVE BATTERY POLE (UNDER MAIN KEY SWITCH)



- |       |                                 |                            |
|-------|---------------------------------|----------------------------|
| C1,C2 | CONDENSATORI DI FILTRO          | SUPPRESSOR CAPACITORS      |
| F1,F2 | FUSIBILI                        | FUSES                      |
| K1    | CONTATTORE PRINCIPALE           | POWER SUPPLY CONTACTOR     |
| K2    | CONTATTORE ROTAZIONE ORARIA     | CLOCKWISE CONTACTOR        |
| K3    | CONTATTORE ROTAZIONE ANTIORARIA | COUNTERCLOCKWISE CONTACTOR |
| M     | MOTORE C.C.                     | D.C. MOTOR                 |
| Q1    | INTERRUTTORE PRINCIPALE         | MAIN SWITCH                |
| S1    | INTERRUTTORE SENSO DI ROTAZIONE | DIRECTION SWITCH           |

MODIFICATA: 1) AGGIUNTI N2 CONDENSATORI C1 , C2 / 2002-11-13 / ZANNI A.

MATERIALE	STATO MATERIALE	DIMENSIONI			TRATTAMENTI	HRC HB Sh
TOLLERANZE QUOTE LIBERE JS 14 - js 14	SMUSSI E RAGGI NON QUOTATI: 0.5 mm	PROGETTISTA	DISEGNATORE MARIANI	DATA 2002/02/01	SOSTITUISCE IL N.	
ORIGINE:		VISTO DIR. TECNICO:		SCALA	SOSTITUITO DAL N.	
	FAMIGLIA 824	DESCRIPTION 12V TIRE CHANGER ELECT. DIAGRAM			COD. SNAP-ON	REV.
	PROGETTO 12V	DENOMINAZIONE SCHEMA ELETT. SMONTAGOMME 12V			DIS. N. 0027230	

135-b-July-03

( BLANK PAGE )

135-b-July-03

( BLANK PAGE )

---

Manufacturer reserves the right of modification without notice.

<b>BOXER SWING PRO 20 s. P. - Revision B</b>	<b>Differences from previous version.</b>
BOXER SWING PRO 20, BOXER SWING PRO 20 GT, BOXER SWING PRO 20 12V  ALL SPARE PARTS MANUAL ON TITLE MENTIONED, HAS BEEN GATHERED IN THIS SINGLE DOCUMENT.	

***Snap-on Equipment***

*Srl a unico socio*

Via per Carpi, 33 - ITALY - 42015 CORREGGIO  
Tel. +39-(0)522-632282 - Fax. +39-(0)522-641830  
E-mail: [boxer-gs@snapon-equipment.com](mailto:boxer-gs@snapon-equipment.com)  
Internet: <http://www.gsboxer.com>

**SWING** PRO 20 / GT  
PRO 20 12 V

Rev. :B

July. 2003