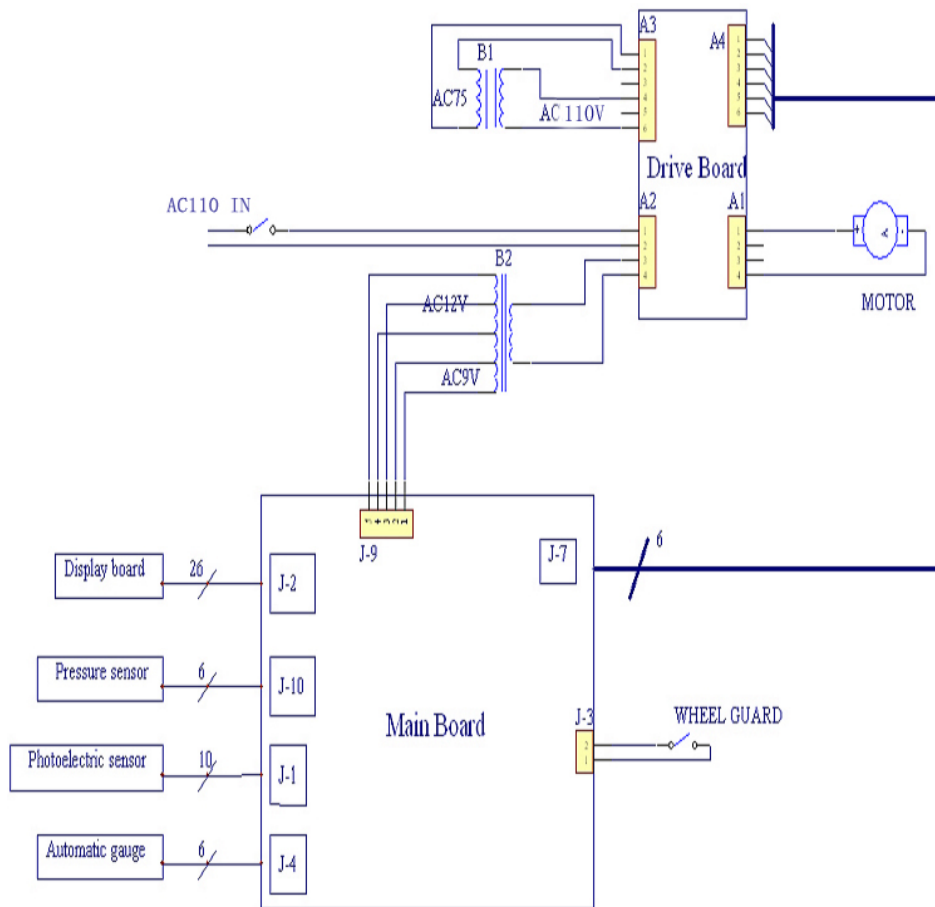


12.The balancer connection



13.Spare part

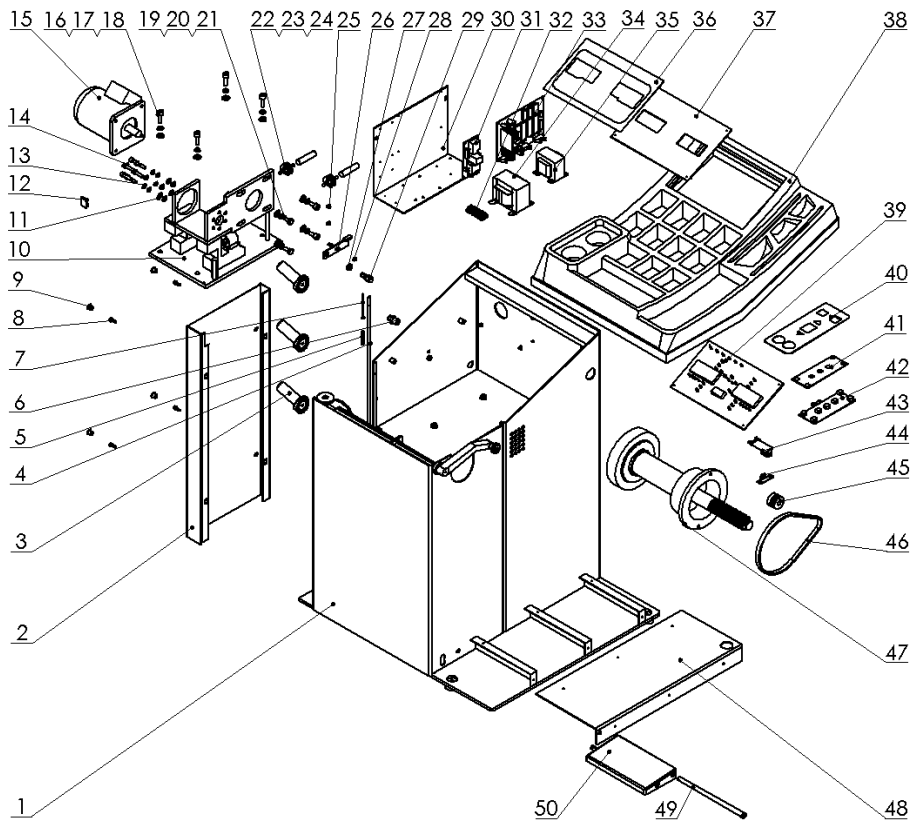
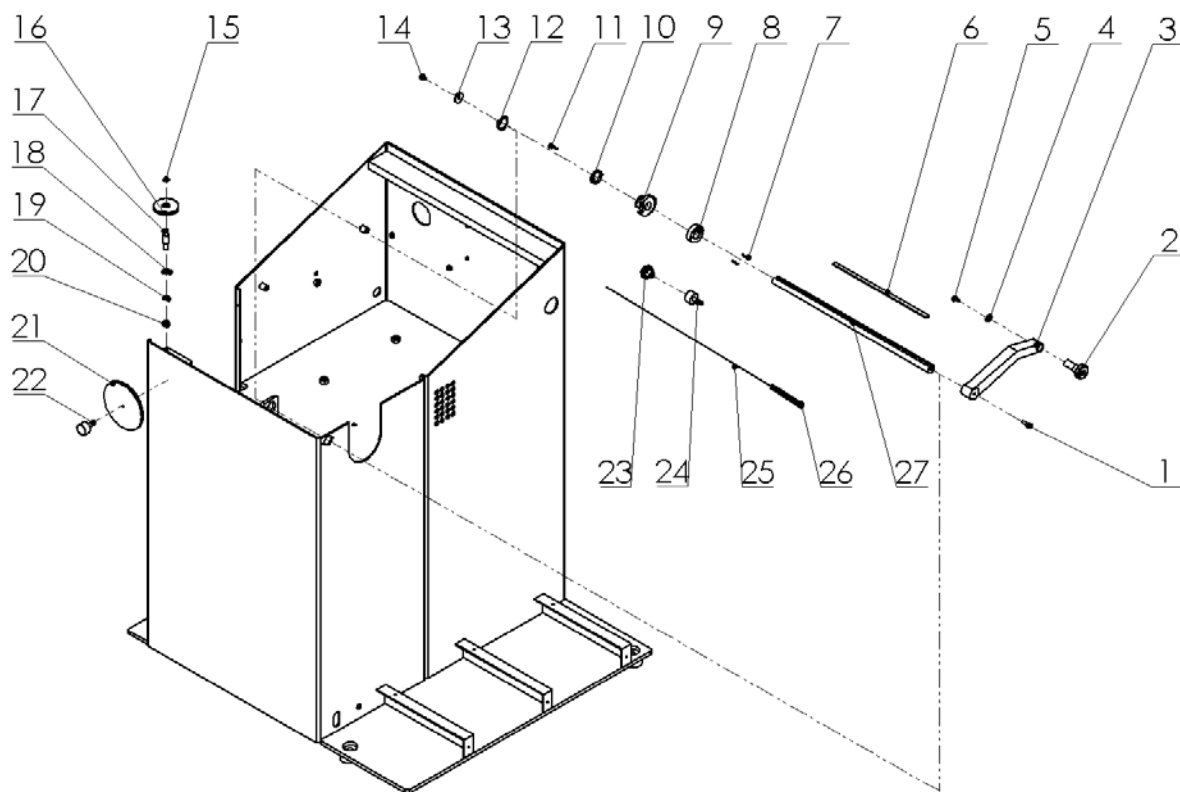


Fig. 1 YLB-601 Main Frame Assembly

Item	Description	Q.ty	Code	Item	Description	Q.ty	Code	Item	Description	Q.ty	Code
1	Main Frame	1	B601-003	18	Spring Washer	4	GB93-87-10	35	Transformer	1	B601-020
2	Left Side Panel	1	B601-005	19	Hex Bolt	4	GB5782-86-M10×30	36	Display Cover	1	B601R-001
3	Stud	3	B601-006	20	Flat Washer	4	GB97.1-85-10	37	Inner Plate	1	B601R-006
4	Foot Break Link	1	B601-015	21	Spring Washer	4	GB93-87-10	38	Weight Tray	1	B601-023
5	Foot Press Spring	1	B601-007	22	Sensor	2	B601-063	39	Display PCB	1	B601-024
6	Plug	1	B601-062	23	Ball	4	B601-064	40	Control Plate Cover	1	B601-066
7	Spring Shaft	1	B601-008	24	Hex Bolt	2	GB80-85-M16×60	41	Inner Plate	1	B601-067
8	Hex Bolt	4	GB70-85-M6×16	25	Hex Bolt	2	GB6170-86-M6	42	Control Plate	1	B601-068
9	Jam	4	B601-009	26	Transfer Link	1	B601-013	43	Rotary Encoder	1	B601-025
10	Suspension Assembly	1	B601-010	27	Hex Bolt	1	GB6172-86-M12	44	Encoder Bracke	1	B601-026
11	Flat Washer	6	GB97.1-85-8	28	Bolt	1	GB6182-86-M6	45	Belt Pulley	1	B601-027
12	Switch	1	B601-011	29	Foot Break Shaft	1	B601-014	46	Belt	1	B601-028
13	Spring Washer	6	GB93-87-8	30	Bracket Panel 1	1	B601-016	47	Balance Shaft Assembly	1	B601R-002
14	Hex Bolt	6	GB70-85-M8×25	31	Motor PCB	1	B601-017	48	Cover Plate	1	B601-031
15	Electric Motor	1	B601-012	32	Terminal Block	1	B601-018	49	Foot Break Rod	1	B601-001
16	Hex Bolt	4	GB70-85-M10×30	33	Power Supply	1	B601-019	50	Foot Break	1	B601-002
17	Flat Washer	4	GB97.1-85-10	34	Transformer	1	B601-021				



YLB-601 Measuring Rod Assembly

Item	Description	Q.ty	Code	Item	Description	Q.ty	Code
1	Bolt	1	GB5782-86-M6×16	15	Sprint Stop	1	GB894.1-86-8
2	Measuring Head Cover	1	B601R-003	16	Rotary Wheel	1	B601-032
3	Measuring Arm	1	B601R-007	17	Rotary Shaft	1	B601-033
4	Washer	1	GB96-85-5	18	Plat Washer	1	GB97.1-85-8
5	Bolt	1	GB818-85-M5×10	19	Spring Washer	1	GB93-87-8
6	Gauge Sticker	1	B601-061	20	Hex Nut	1	GB6170-86-M8
7	Spring column pin	2	GB879-86-3×16	21	Transfer Wheel	1	B601-051
8	Rod Housing	1	B601R-008	22	Encoder	1	B601-035
9	Gear cover	1	B601R-009	23	Minor Gear	1	B601R-013
10	Gear cover washer	1	B601R-010	24	Encoder	1	B601-035
11	Spring column pin	1	GB879-86-3×16	25	Wire Assembly	1	B601-050
12	Sprint Stop	1	GB894.1-86-24	26	Wire Spring	1	B601-048
13	washer	1	B601R-011	27	Staff Gauge rod	1	B601R-014
14	Wire drawing bolt	1	B601R-012				

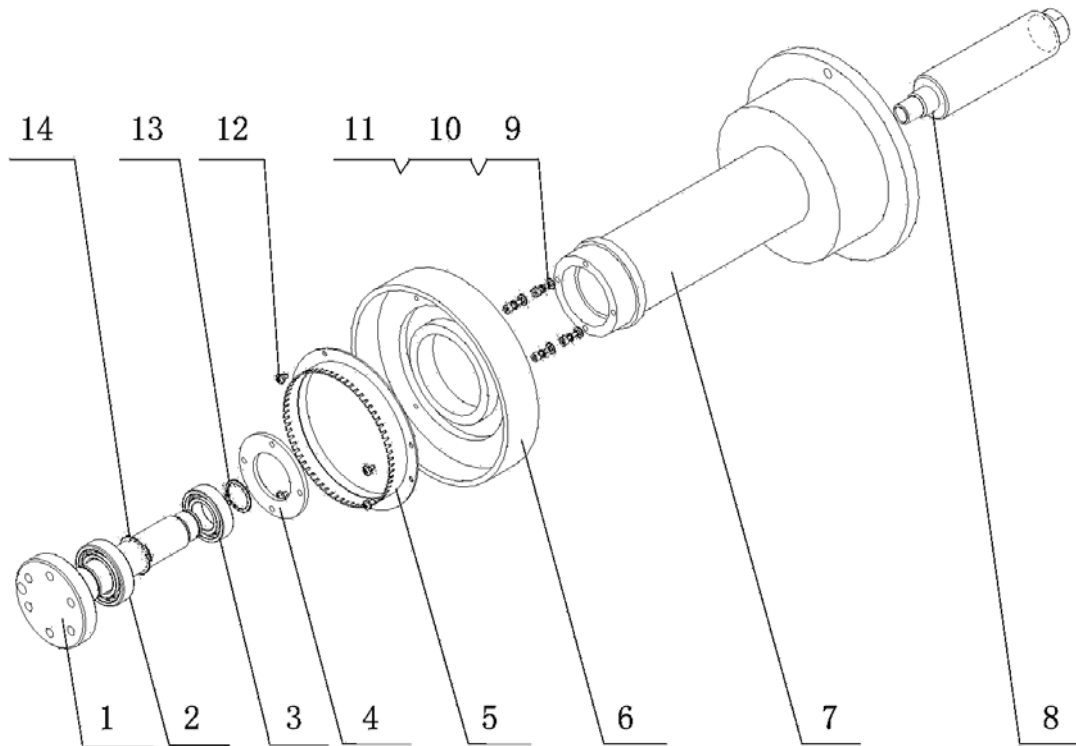


Fig. 2 YLB-601 Main Frame Assembly

Item	Description	Q.ty	Code
1	Bearing Support	1	B601-055
2	Bearing	1	6006
3	Bearing	1	6005
4	Bearing Plate	1	B601-056
5	Rotary Shutter	1	B601-057
6	Belt Wheel	1	B601-058
7	Main Shaft	1	B601R-004
8	Stub Shaft	1	B601R-005
9	Hex Bolt	4	GB70-85-M4×12
10	Flat Washer	4	GB97.1-85-4
11	Spring Washer	4	GB93-87-4
12	Screw	4	GB818-85-M4×6
13	Spring Block	1	GB894.1-86-25
14	Spring Block	1	GB894.1-86-30