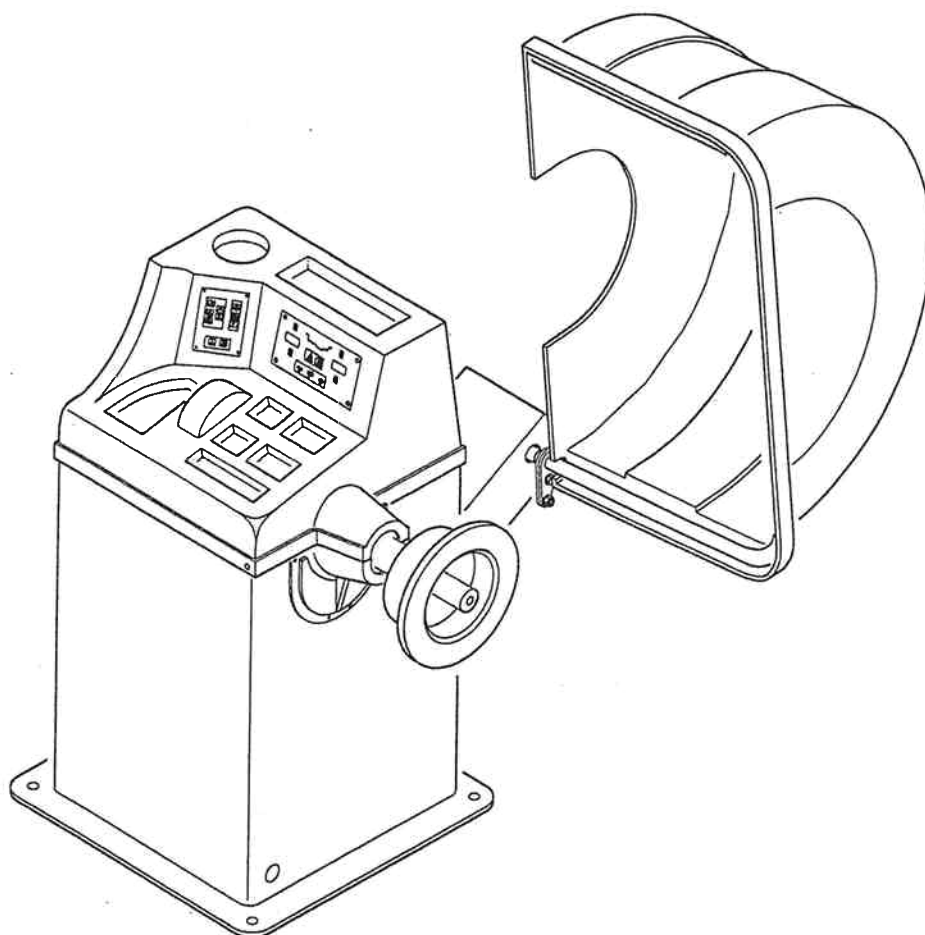




MT 2000

15 LISTA COMPONENTI
15 LIST OF COMPONENTS



I

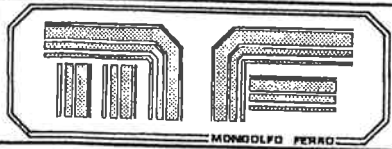
ISTRUZIONI PER LA RICHIESTA DEI RICAMBI

- 1) Consultando le tavole di seguito riportate, individuare esattamente il n. del particolare desiderato (Ex. Tav. A n. A-10).
- 2) Dalla tabella ricambi, trovare il corrispondente codice (Ex. 36017938)
- 3) Nella richiesta specificare esattamente :
Il modello ed il n. di matricola della macchina.
Il codice ricambio (n. 8 cifre) del particolare desiderato.
Ex. MT 2000 matr. 100, cod.36017938.

GB

INSTRUCTIONS FOR REQUESTING SPARE PARTS

- 1) Consulting the following tables, single out the exact n. of spare parts requested (Eg. Table A n. A-10).
- 2) Find the corresponding spare parts code from the spare parts table (E. 36017938)
- 3) In the request specify exactly :
The model and serial n. of the machine.
The spare parts code (8 figures) of the requested spare part.
Eg. MT 2000 serial n. 100, code 36017938.

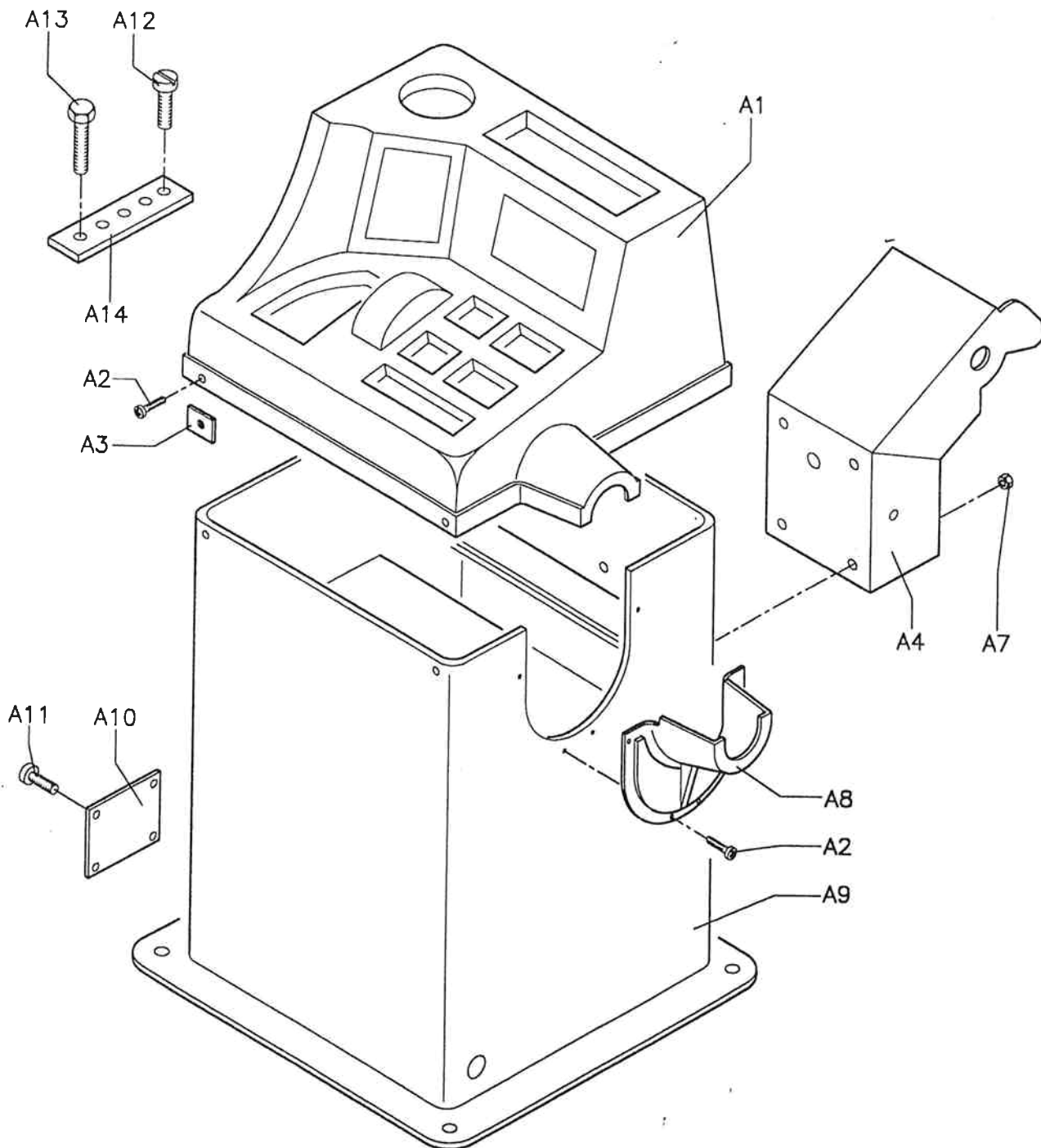


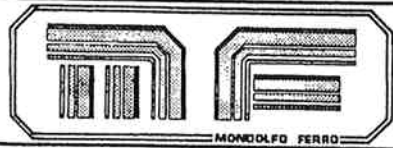
TELAIO
FRAME
CHÂSSIS
RAHMEN
CHASIS

MT 2000

TAV. A

IMPORTANTE: per la richiesta dei ricambi far riferimento al codice ricambi (vedi pag. 11).
IMPORTANT: for the request of spare parts please refer to spare parts code (see page 11).
IMPORTANT: pour la demande de pièces de rechange faire référence au code des pièces de rechange (voir pages 11).
WICHTIG: für die Anforderung von Ersatzteilen die Ersatzteilcodes (siehe Seite 11) angeben.
IMPORTANTE: para pedir los repuestos remitirse al código repuestos (ver pag. 11).



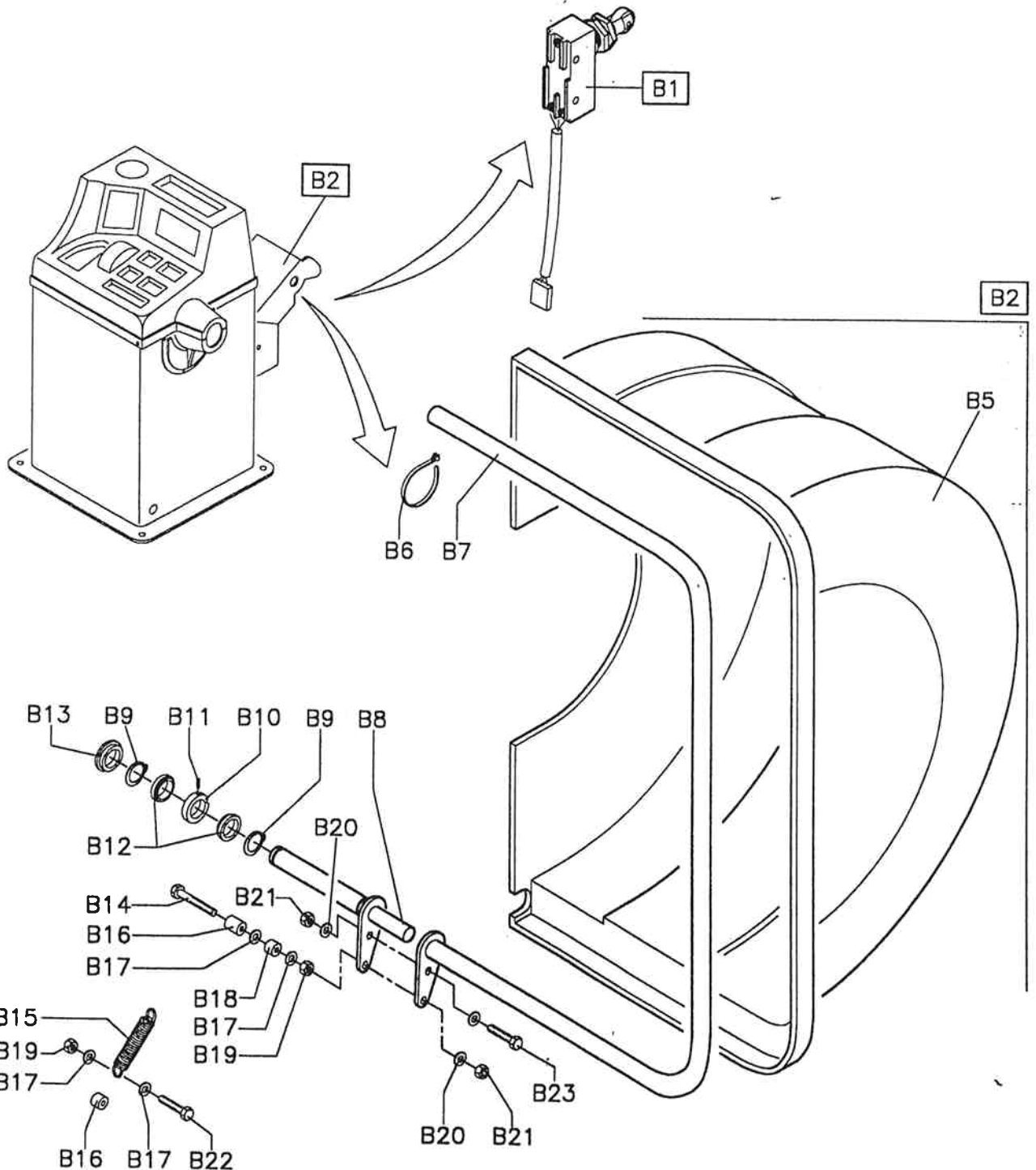


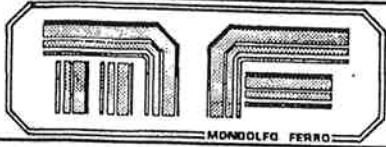
CARTER COPRIRUOTA
WHEEL-COVER CASING
CARTER COUVRE-ROU
RADSCHUTZBOGEN
CARTER PROTECTOR

MT 2000

TAV. B

IMPORTANTE: per la richiesta dei ricambi far riferimento al codice ricambi (vedi pag. 11).
IMPORTANT: for the request of spare parts please refer to spare parts code (see page 11).
IMPORTANT: pour la demande de pièces de rechange faire référence au code des pièces de rechange (voir pages 11).
WICHTIG: für die Anforderung von Ersatzteilen die Ersatzteilcodes (siehe Seite 11) angeben.
IMPORTANTE: para pedir los repuestos remitirse al código repuestos (ver pag. 11).



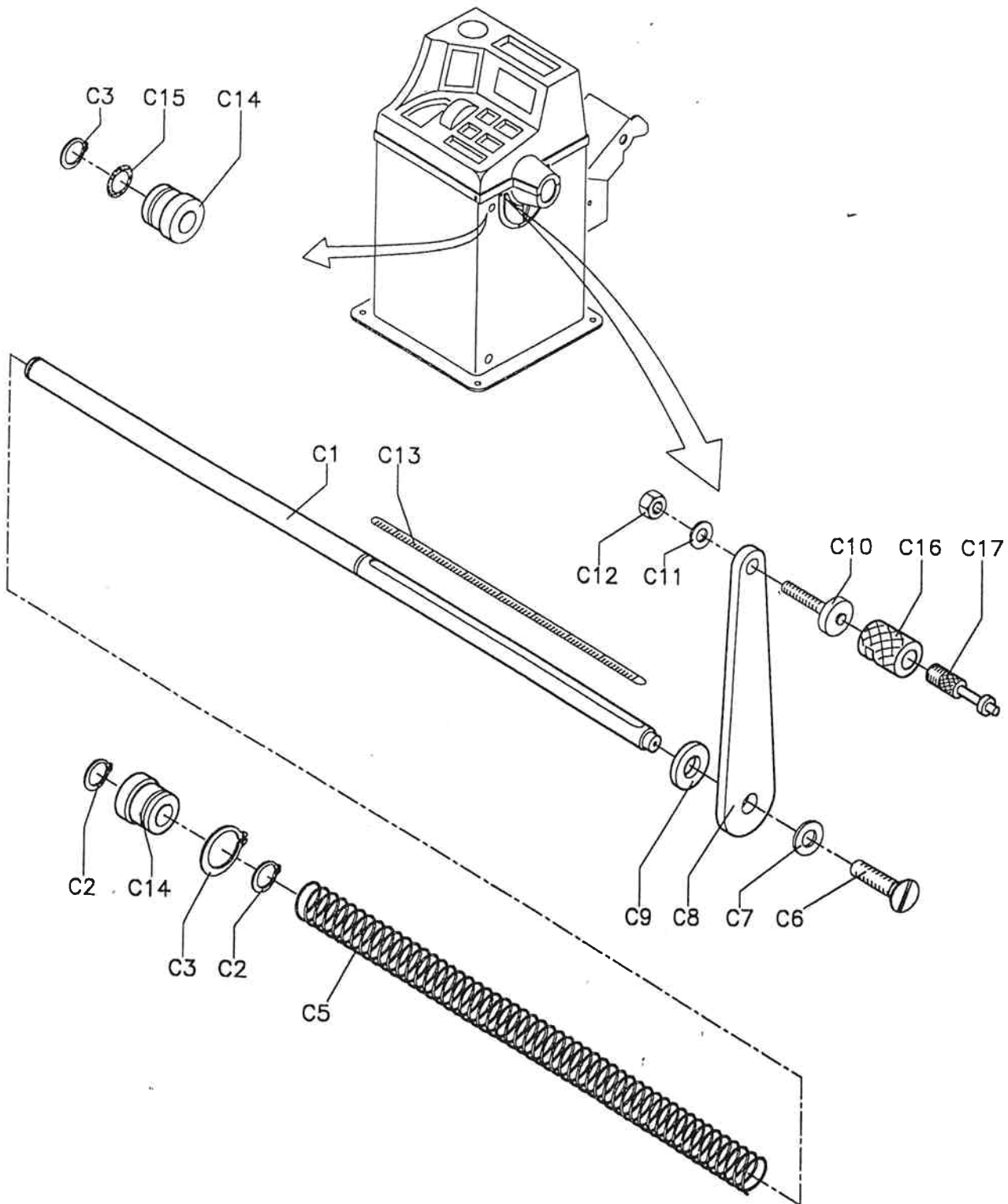


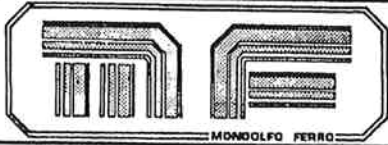
TASTATORE
SENSOR
TATEUR
TASTER
PALPADOR

MT 2000

TAV. C

IMPORTANTE: per la richiesta dei ricambi far riferimento al codice ricambi (vedi pag. 12).
IMPORTANT: for the request of spare parts please refer to spare parts code (see page 12).
IMPORTANT: pour la demande de pièces de rechange faire référence au code des pièces de rechange (voir pages 12).
WICHTIG: für die Anforderung von Ersatzteilen die Ersatzteilcodes (siehe Seite 12) angeben.
IMPORTANTE: para pedir los repuestos remitirse al código repuestos (ver pag. 12).



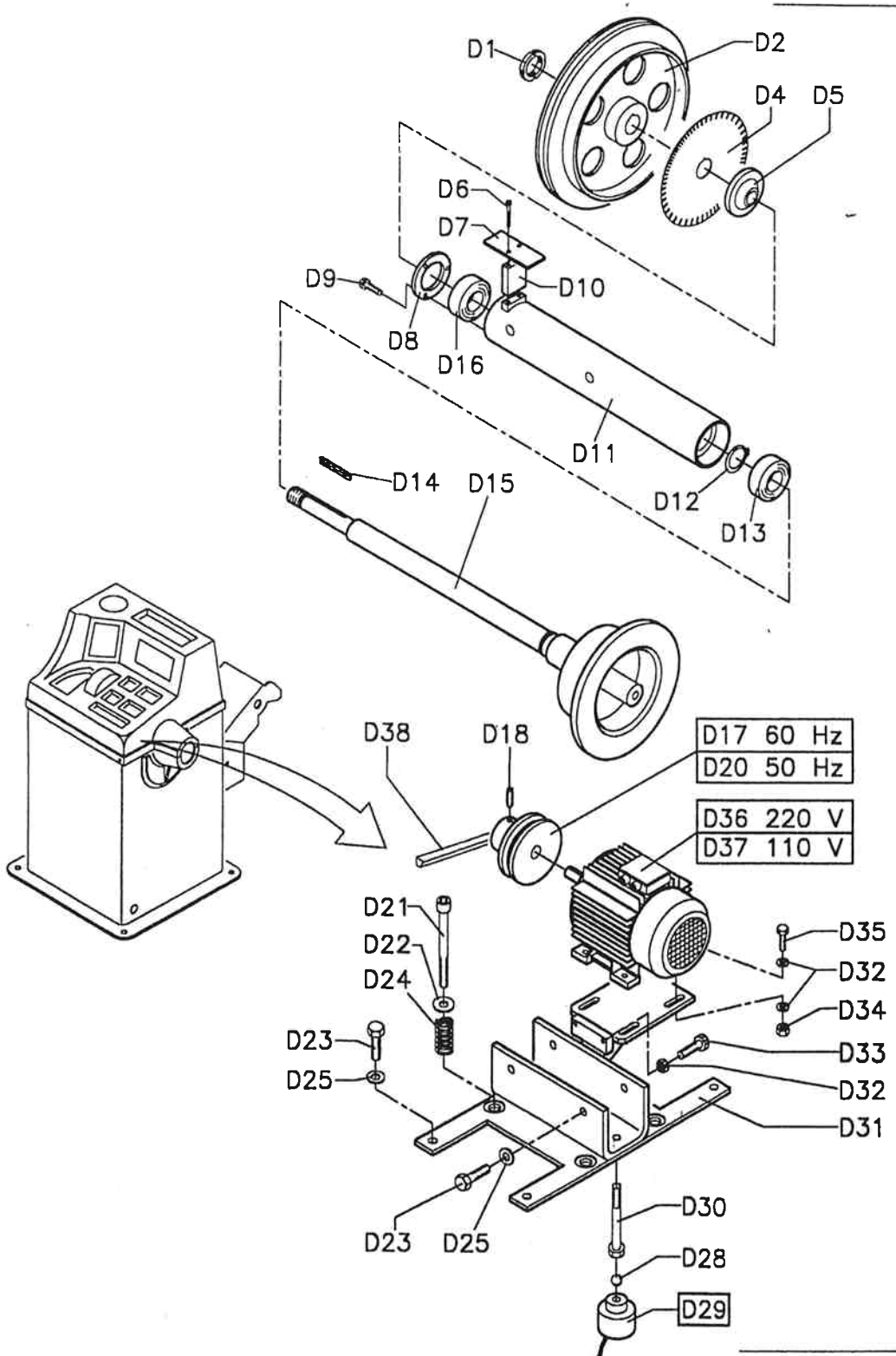


PARTE MECCANICA
MECHANICAL PARTS
PARTS MECHANIQUES
MECHANISCHER TEIL
PARTE MECANICA

MT 2000

TAV. D

IMPORTANTE: per la richiesta dei ricambi far riferimento al codice ricambi (vedi pag. 13).
IMPORTANT: for the request of spare parts please refer to spare parts code (see page 13).
IMPORTANT: pour la demande de pièces de rechange faire référence au code des pièces de rechange (voir pages 13).
WICHTIG: für die Anforderung von Ersatzteilen die Ersatzteilcodes (siehe Seite 13) angeben.
IMPORTANTE: para pedir los repuestos remitirse al código repuestos (ver pag. 13).



| | | |
|-----|------|------|
| D26 | 220V | 50Hz |
| D27 | 220V | 60Hz |
| D39 | 110V | 50Hz |
| D40 | 110V | 60Hz |

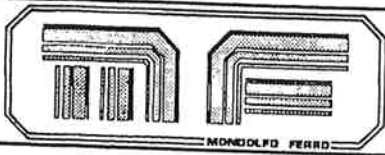
| | |
|-----|-------|
| D17 | 60 Hz |
| D20 | 50 Hz |

| | |
|-----|-------|
| D36 | 220 V |
| D37 | 110 V |

| | |
|-----|--|
| D35 | |
| D32 | |
| D34 | |
| D33 | |
| D32 | |
| D31 | |

| | |
|-----|--|
| D21 | |
| D22 | |
| D24 | |
| D23 | |
| D25 | |

| | |
|-----|--|
| D23 | |
| D25 | |
| D30 | |
| D28 | |
| D29 | |

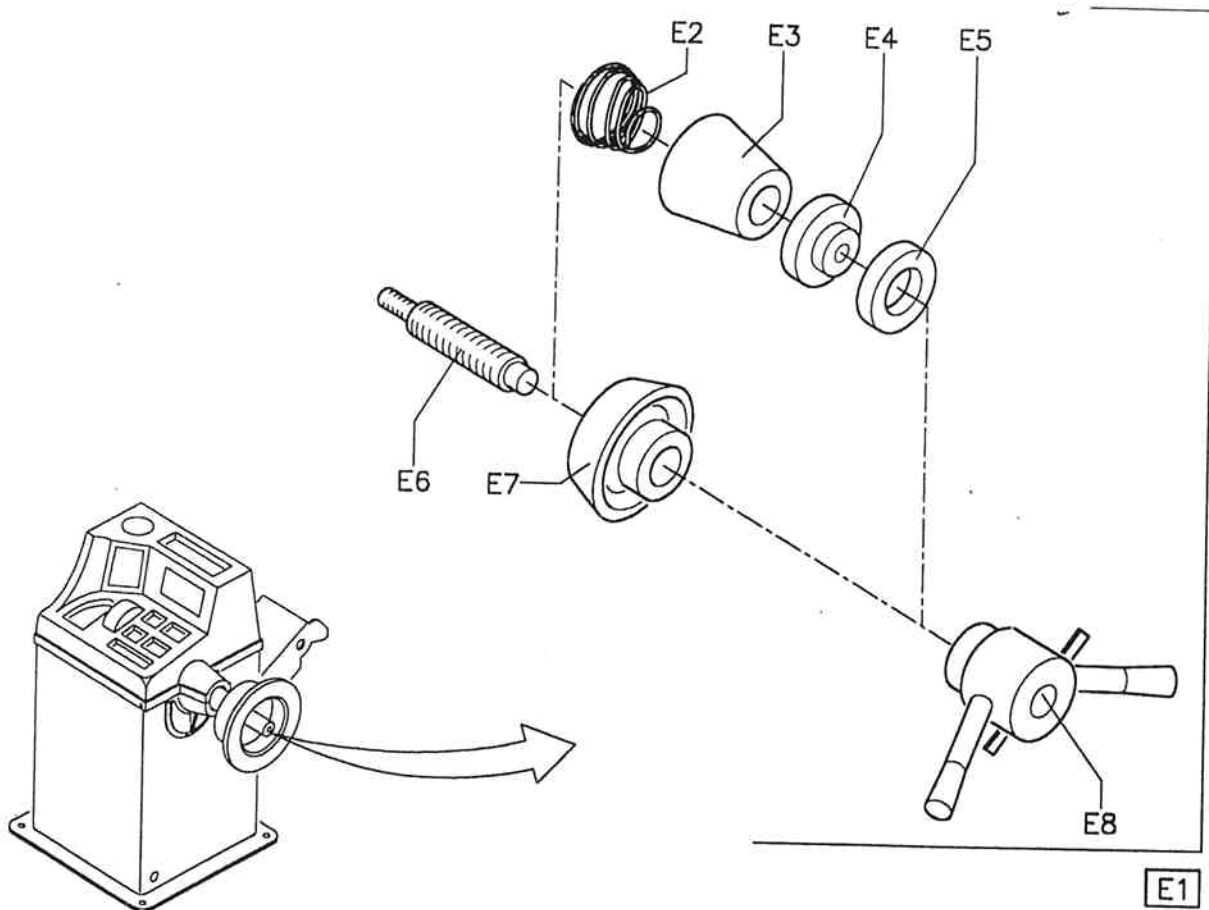


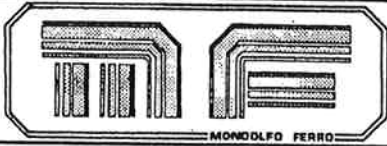
DISPOSITIVO A CONI
CONE DEVICE
DISPOSITIF À CÔNES
MITTENZENTRIERVORRICHTUNG
DISPOSITIVO A CONOS

MT 2000

TAV. E

IMPORTANTE: per la richiesta dei ricambi far riferimento al codice ricambi (vedi pag. 14).
IMPORTANT: for the request of spare parts please refer to spare parts code (see page 14).
IMPORTANT: pour la demande de pièces de rechange faire référence au code des pièces de rechange (voir pages 14).
WICHTIG: für die Anforderung von Ersatzteilen die Ersatzteilcodes (siehe Seite 14) angeben.
IMPORTANTE: para pedir los repuestos remitirse al código repuestos (ver pag. 14).



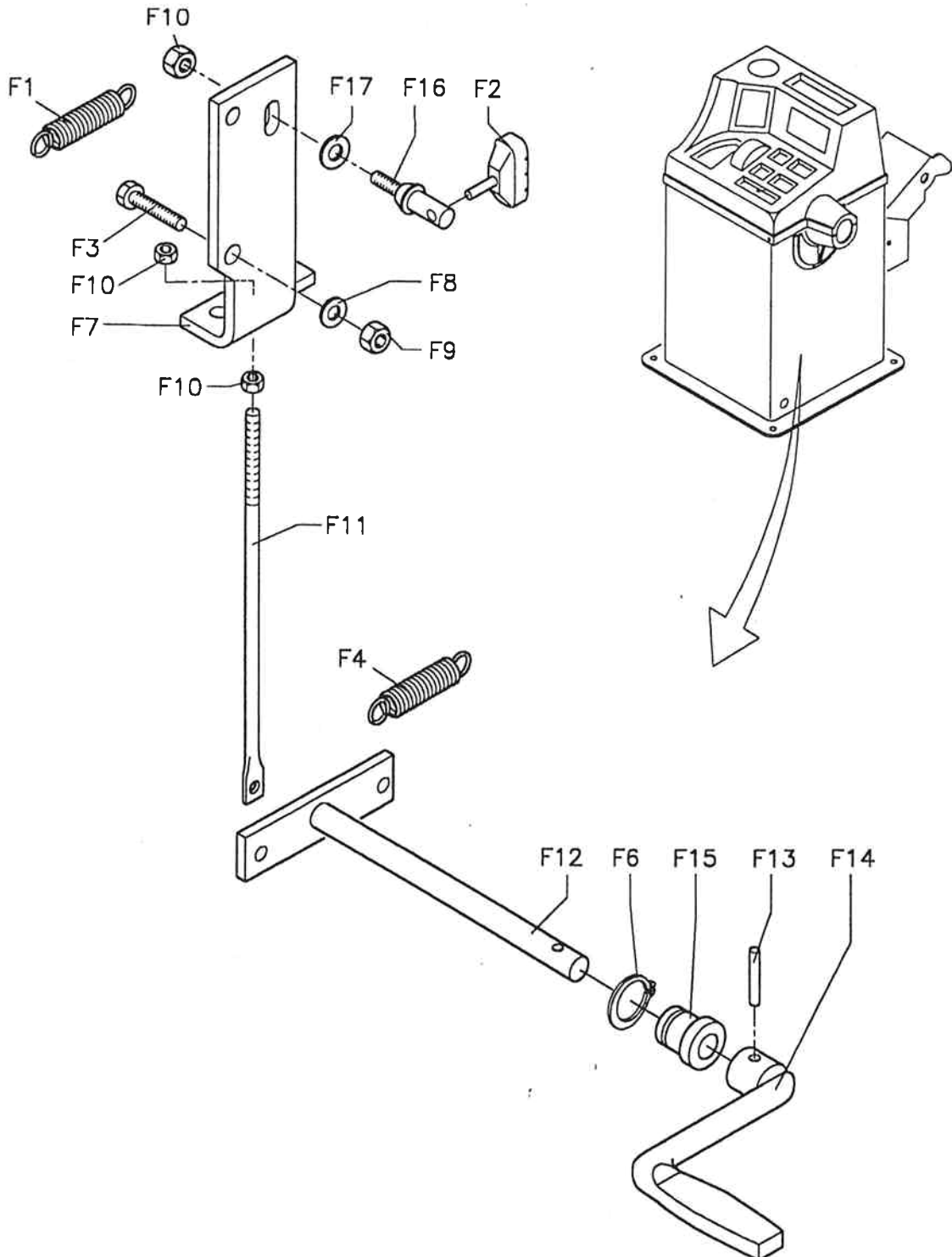


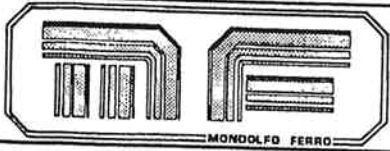
FRENO
BRAKE
FREIN
BREMSE
FRENO

MT 2000

TAV. F

IMPORTANTE: per la richiesta dei ricambi far riferimento al codice ricambi (vedi pag. 15).
IMPORTANT: for the request of spare parts please refer to spare parts code (see page 15).
IMPORTANT: pour la demande de pièces de rechange faire référence au code des pièces de rechange (voir pages 15).
WICHTIG: für die Anforderung von Ersatzteilen die Ersatzteilcodes (siehe Seite 15) angeben.
IMPORTANTE: para pedir los repuestos remitirse al código repuestos (ver pag. 15).



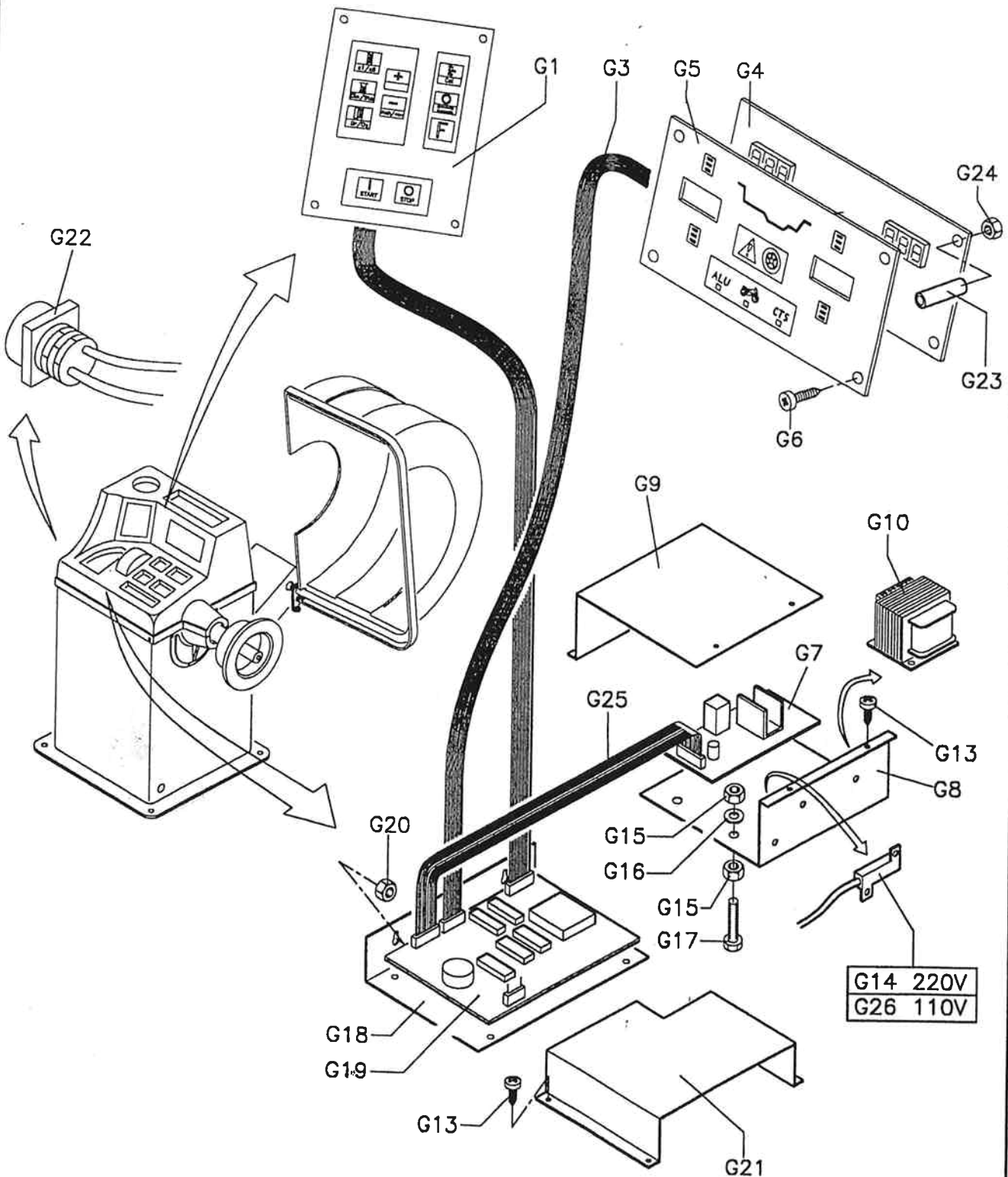


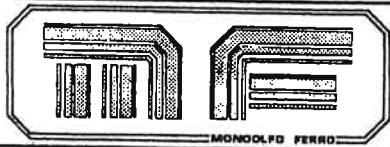
ELETTRONICA
ELECTRONICS
ELECTRONIQUE
ELEKTRONIK
ELECTRONICA

MT 2000

TAV. G

IMPORTANTE: per la richiesta dei ricambi far riferimento al codice ricambi (vedi pag. 15).
IMPORTANT: for the request of spare parts please refer to spare parts code (see page 15).
IMPORTANT: pour la demande de pièces de rechange faire référence au code des pièces de rechange (voir pages 15).
WICHTIG: für die Anforderung von Ersatzteilen die Ersatzteilcodes (siehe Seite 15) angeben.
IMPORTANTE: para pedir los repuestos remitirse al código repuestos (ver pag. 15).

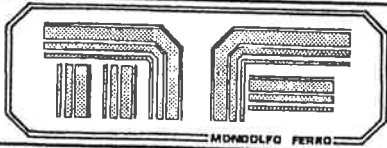




**TABELLA RICAMBI
SPARE PARTS CODE
TABLE PIECES DE RECHANGE
ERSATZTEILLISTE
TABLA REPUESTOS**

MT 2000

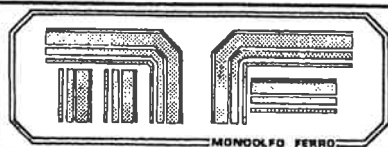
| Posizione Position Position Position Posicion | Codice ricambio Spare parts code Code rechanger Ersatzteilcode Codigo repuesto | Descrizione Description Description Beschreibung Descripción | Posizione Position Position Position Posicion | Codice ricambio Spare parts code Code rechanger Ersatzteilcode Codigo repuesto | Descrizione Description Description Beschreibung Descripción |
|---|--|--|---|--|---|
| TAV. A | | | TAV. B | | |
| A1 | 35016968 | PIANO PORTAPESI WEIGHT TRAY | B1 | 31320051 | MICROPULSANTE + CAVO MT 2000 |
| A2 | 80114025 | VITE AUTOFIL.M3.9x20 DIN 7981 BR SELF-TAPPING SCREW M3.9x20 DIN 7981 BR | | | MICROBUTTON + CABLE MT 2000 |
| A3 | 81912350 | PIASTRINA PER AUTOFIL U42 - 350 PLAQUE FOR SELF-TAPPING U42 - 350 | B2 | 19132000 | GRUPPO SUPPORT + CARTER GMT 2000 SUPPORT + SUMP UNIT MT 2000 |
| A4 | 36017157 | SUPPORTO CARTER COPRIRUOTA MT2000 WHEEL-COVER SUMP SUPPORT | B3 | | |
| A5 | 80038024 | VITE TE M6x16 UNI 5739 88 SCREW TE Mx16 UNI 5739 88 | B4 | | |
| A6 | 81010006 | RONDELLA PIANA M 6 UNI 6592 FLAT WASHER M6 UNI 6592 | B5 | 35016970 | PASSARUOTA MT2000 WHEEL-GUIDE MT2000 |
| A7 | 80416006 | DADO A. M6 PG UNI 5587 6S NUT A. M6 PG UNI 5587 6S | B6 | 84990012 | FASCETTE LEGRAND 4,6x180 LEGRAND HOSE CLAMPS 4,6x180 |
| A8 | 35016969 | CUFFIA MANDRINO MT2000 CHUCK GUARD MT2000 | B7 | 36017119 | TUBOLARE CARTER COPRIRUOTA MT 2000 WHEEL-COVER SUMP TUBULAR MT 2000 |
| A9 | 36017135 | BASAMENTO MT2000 BASEMENT MT2000 | B8 | 36017152 | PROLUNGA TUBOLARE CARTER MT 2000 SUMP TUBULAR EXTENSION MT 2000 |
| A10 | 36017938 | CARTER PER BASAMENTO MT 2000 BASEMENT SUMP MT 2000 | B9 | 81300028 | SEEGER EST. D 28 UNI 7435 EXTERNAL SEEGER D 28 UNI 7435 |
| A11 | 80224021 | VITE T.CROCE M5x8 UNI 7687 BR CROSS-HEAD SCREW M5x8 UNI 7687 BR | B10 | 33011995 | CAMMA AZION. MICROINTER. EQUIL. EQUIL. MICROSWITCH DRIVING CAM |
| A12 | 80064021 | VITE TCI M4x10 UNI 6107 48 SCREW TCI M4x10 UNI 6107 48 | B11 | 80182029 | GRANO M6x20 UNI 5927 12.9 GRUB SCREW M6x20 UNI 5927 12.9 |
| A13 | 80038018 | VITE TE M5x25 UNI 5739 88 SCREW TE M5x25 UNI 5739 88 | B12 | 35009020 | BOCCOLA NYLON EQUIL. EQUIL. NYLON BUSH |
| A14 | 36012326 | PIASTRINO ANCORAGGIO MASSE MASSES-ANCHORING PLAQUE | B13 | 87290812 | TAPPO A SCATTO DP812 NERO ELEKTROZ RELEASE CAP DP812 BLACK ELEKTROZ |
| | | | B14 | 80018010 | VITE TE M8x70 UNI 5737 8.8 SCREW TE M8X70 UNI 5737 8.8 |
| | | | B15 | 33017120 | MOLLA RICHIAMO MT2000 RECALL SPRING MT 2000 |
| | | | B16 | 33011656 | FINECORSIA PEDALE MORSA È PIANTONE VICE- PEDAL AND STEERING- COLUMN STROKE END |
| | | | B17 | 81000824 | ROND. PIANA FL M8x24 UNI 6593 LAT WASHER FL M8x24 UNI 6593 |



**TABELLA RICAMBI
SPARE PARTS CODE
TABLE PIÈCES DE RECHANGE
ERSATZTEILLISTE
TABLA REPUESTOS**

MT 2000

| Posizione Position Position Position Posicion | Codice ricambio Spare parts code Code rechanger Ersatzteilcode Codigo repuesto | Descrizione Description Description Beschreibung Descripción | Posizione Position Position Position Posicion | Codice ricambio Spare parts code Code rechanger Ersatzteilcode Codigo repuesto | Descrizione Description Description Beschreibung Descripción |
|---|--|--|---|--|--|
| B18 | 35017534 | FINECORSIA CARTER COPRIRUOTA MT2000 COVER-WHEEL SUMP STROKE END | C1 | 33017108 | ASTA TASTATORE MT 2000 FEELER SHAFT MT 2000 |
| B19 | 80416008 | DADO A. M8 PG UNI 5587 6S NUT A. M8 PG UNI 5587 6S | C2 | 81300012 | SEEGER EST. D12 UNI 7435 EXTERNAL SEEGER D12 UNI 7435 |
| B20 | 81010008 | ROND. PIANA M8 UNI 6592 FLAT WASHER M8 UNI 6592 | C3 | 81300022 | SEEGER EST. D22 UNI 7435 EXTERNAL SEEGER D22 UNI 7435 |
| B21 | 80445008 | DADO AUT. A. M8 PG UNI 7473 5S SELF-LOCKING NUT A. UNI 7473 5S | C4 | 35017111 | DISTANZIALE IN GOMMA MT 2000 RUBBER SPACER MT 2000 |
| B22 | 80038040 | VITE TE M8x40 UNI 5739 88 SCREW TE 38x40 UNI 5739 88 | C5 | 33017113 | MOLLA RICHIAMO TASTATORE MT 2000 FEELER RECALL SPRING MT 2000 |
| B23 | 80038036 | VITE TE M8x20 UNI 5739 88 SCREW TE M8x20 UNI 5739 88 | C6 | 80094013 | VITE TSI M4x8 UNI 6109 SCREW TSI M4x8 UNI 6109 |
| | | | C7 | 81000412 | ROND. PIANA FL M4x12 UNI 6593 FLAT WASHER FL 34x12 UNI 6593 |
| | | | C8 | 36017109 | INDICE CALIBRO DIST. RUOTA MT 2000 WHEEL-DISTANCE GAUGE POINTER MT 2000 |
| | | | C9 | 35017111 | DISTANZIALE SPACER |
| | | | C10 | 33017110 | PERNO TASTATORE DISTANZA MT 2000 DISTANCE FEELER PIN MT 2000 |
| | | | C11 | 81000612 | ROND. PIANA FL M6x12 UNI 6593 FLAT WASHER FL 36x12 UNI 6593 |
| | | | C12 | 80416006 | DADO A. M6 PG UNI 5587 6S NUT A. M6 PG UNI 5587 6S |
| | | | C13 | 35017148 | ADESIVO ASTA TASTATORE MT 2000 FEELER SHAFT ADHESIVE MT 2000 |
| | | | C14 | 35017112 | BOCCOLA GUIDA GUIDE BUSH |
| | | | C15 | 85603081 | OR 3081 OR 3081 |
| | | | C16 | 33013682 | GHIERA FRESATA MILLED RING NUT |
| | | | C17 | 33013683 | ASTA PROLUNGA EXTENSION SHAFT |



**TABELLA RICAMBI
SPARE PARTS CODE
TABLE PIÉCES DE RECHANGE
ERSATZTEILLISTE
TABLA REPUESTOS**

MT 2000

| Posizione Position Position Position Posición | Codice ricambio Spare parts code Code rechanger Ersatzteilcode Codigo repuesto | Descrizione Description Description Beschreibung Descripción | Posizione Position Position Position Posición | Codice ricambio Spare parts code Code rechanger Ersatzteilcode Codigo repuesto | Descrizione Description Description Beschreibung Descripción |
|---|--|--|---|--|---|
| TAV. D | | | | | |
| D1 | 80375020 | GHIERA AUT. M20x1 PF SELF-LOCKING RING NUT M20x21 PF | D20 | 33018401 | PULEGGIA MOTORE AQUILA DP 52A 50Hz AQUILA MOTOR PULLEY DP 52A 50Hz |
| D2 | 33018400 | PULEGGIA MANDRINO MT 2000 CHUCK PULLEY MT 2000 | D21 | 80108065 | VITE TCCE M8x160 UNI 5931 SCREW TCCE 38x160 UNI 5931 |
| D3 | | | D22 | 33016787 | GUIDA MOLLA MT 2000 SPRING GUIDE MT 2000 |
| D4 | 36016352 | DISCO ENCODER MT2000 ENCODER DISC MT2000 | D23 | 80038050 | VITE TE M10x20 UNI 5739 88 SCREW TE M10x20 UNI 57 39 88 |
| D5 | 33017105 | BOCCOLA DISCO ENCODER MT 2000 ENCODER DISC BUSH MT 2000 | D24 | 33012235 | MOLLA PIASTRA EQUIL. EQUIL. PLAQUE SPRING |
| D6 | 80108011 | VITE TCCE M4x45 UNI 5931 8.8 SCREW TCCE 34x45 UNI 5931 8.8 | D25 | 81010010 | ROND. PIANA M10 UNI 6592 FLAT WASHER M10 UNI 6592 |
| D7 | 32017374 | SCHEDA OPTO MT 2000 OPTO CARD MT 2000 | D26 | 31120082 | GRUPPO MECCANICA MT 2000 220-2-50 Hz MECHANICAL UNIT MT 2000 220-2-50 Hz |
| D8 | 33017104 | ANELLO BLOCCAGGIO CUSCINETTO MT 2000 BEARING-BLOCKING RING MT 2000 | D27 | 31120086 | GRUPPO MECCANICA MT 2000 220-2-60 Hz MECHANICAL UNIT MT 2000 220-2-60 Hz |
| D9 | 80074021 | VITE T.CROCE M5x12 UNI 7687 CROSS-HEAD SCREW M5x12 UNI 7687 | D28 | 88900516 | SFERA PICK-UP 5/16"7,938 PICK-UP BALL 5/16"7,938 |
| D10 | 33017118 | DISTANZIALE OPTO MT 2000 OPTO SPACER 3T 2000 | D29 | 32018491 | SUPPORTO PICK-UP MT 2000 PICK-UP SUPPORT MT 2000 |
| D11 | 36017070 | GRUP.CANOTTO ALBERO MANDRINO MT 2000 CHUCK SHAFT-HOLDER BARREL UNIT MT 2000 | D30 | 33017107 | VITE PER SFERA MT 2000 BALL SCREW MT 2000 |
| D12 | 81300030 | SEGER EST. D30 UNI 7435 EXTERNAL SEGER D30 UNI 7435 | D31 | 36017071 | GRUPPO PIASTRA SOSPESA MT 2000 SUSPENDED PLAQUE UNIT MT 2000 |
| D13 | 88060069 | CUSCINETTO 6006-2RS "SKF" BEARING 6006-2RS "SKF" | D32 | 80416008 | DADO A. M8 PG UNI 5587 6S NUT A. M8 PG UNI 5587 6S |
| D14 | 81500670 | LINGUETTA 6x6x70 UNI 6604 TONGUE 6x6x70 UNI 6604 | D33 | 80038040 | VITE TE M 8x40 UNI 5739 88 SCREW TE M 8x40 UNI 5739 88 |
| D15 | 36016303 | GRUPPO ALBERO BILANCIATRICE MT 2000 BALANCING SHAFT UNIT MT 2000 | D34 | 80445008 | DADO AUT. A. M8 PG UNI 7473 5S SELF-LOCKING NUT A. M8 PG UNI 7473 5S |
| D16 | 88060049 | CUSCINETTO 6004-2RS "SKF" BEARING 6004-2RS 2SKF" | D35 | 80038037 | VITE TE M8x25 UNI 5739 88 SCREW TE M8x25 UNI 5739 88 |
| D17 | 33018441 | PULEGGIA DP42 MOTORE AQUILA 60 Hz AQUILA MOTOR PULLEY DP 42 60 Hz | D36 | 82017764 | MOTORE MONOF. P6 220V B3 50Hz 0.37Kw SINGLE- PHASE MOTOR P6 220V B3 50Hz 0.37Kw |
| D18 | 80182025 | GRANO M 6x8 UNI 5927 12.9 GRUB SCREW 6x8 UNI 5927 12.9 | D37 | 82017765 | MOT.EL.MONOFASE P6 110V B3 50-60Hz 0.37 Kw SINGLE-PHASE- EL. MOTOR P6 110V B3 50-60 Hz 0.37 Kw |
| D19 | | | | | |

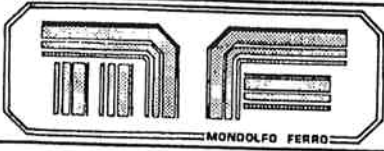
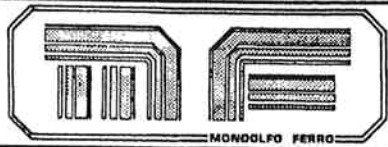


TABELLA RICAMBI
 SPARE PARTS CODE
 TABLE PIÈCES DE RECHANGE
 ERSATZTEILLISTE
 TABLA REPUESTOS

MT 2000

| Posizione Position Position Position Posicion | Codice ricambio Spare parts code Code rechanger Ersatzteilcode Codigo repuesto | Descrizione Description Description Beschreibung Descripción | Posizione Position Position Position Posicion | Codice ricambio Spare parts code Code rechanger Ersatzteilcode Codigo repuesto | Descrizione Description Description Beschreibung Descripción |
|---|--|---|---|--|---|
| D38 | 87161007 | CINGHIA 2B 813J6 OPTIBELT BELT 2B 813J6 OPTIBELT | | | |
| D39 | 31120088 | GRUPPO MECCANICA MT 2000 110-2-50 Hz MECHANICAL UNIT MT 2000 110-2-50 Hz | E1 | 19131043 | SERIE CONI+GHIERA STD. SERIES CONES+RING NUT STD. HWK 124657032 |
| D40 | 31120088 | GRUPPO MECCANICA MT 2000 110-2-60 Hz MECHANICAL UNIT MT 2000-2-110-2-60 Hz | E2 | | |
| | | | E3 | | |
| | | | E4 | | |
| | | | E5 | | |
| | | | E6 | | |
| | | | E7 | | |
| | | | E8 | | |



**TABELLA RICAMBI
SPARE PARTS CODE
TABLE PIECES DE RECHANGE
ERSATZTEILLISTE
TABLA REPUESTOS**

MT 2000

| Posizione Position Position Position Posicion | Codice ricambio Spare parts code Code rechanger Ersatzteilcode Codigo repuesto | Descrizione Description Description Beschreibung Descripción | Posizione Position Position Position Posicion | Codice ricambio Spare parts code Code rechanger Ersatzteilcode Codigo repuesto | Descrizione Description Description Beschreibung Descripción |
|---|--|---|---|--|--|
| TAV. F | | | TAV. G | | |
| F1 | 33009305 | MOLLA SPRING | G1 | 32016982 | TASTIERA COMANDI MT2000 CONTROLS KEYBOARD MT 2000 |
| F2 | 84990474 | PATTINO MTB CON PERNO PLATE MTB WITH PIN | G2 | | |
| F3 | 80038037 | VITE TE M8x25 SCREW M8x25 | G3 | 32017386 | CAVO DISPLAY DISPLAY CABLE |
| F4 | 33019703 | MOLLA SPRING | G4 | 32017523 | SCHEDA DISPLAY (DSE) MT 2000 |
| F5 | | | | | DISPLAT CARD (DSE) MT 2000 |
| F6 | 81300022 | SEEGER EST. D 22 UNI 7435 EXTERNAL SEEGER D 22 UNI 7435 | G5 | 32016983 | PANNELLO DISPLAY MT2000 DISPLAY PANEL MT 2000 |
| F7 | 36018889 | SUPPORTO GANASCIA JAW SUPPORT | G6 | 80050022 | VITE TPSCE M4x10 UNI 5933 10.9 |
| F8 | 81010008 | ROND. PIANA M8 UNI 6592 FLAT WASHER M8 UNI 6592 | | | SCREW TPSCE M4x10 UNI 5933 10.9 |
| F9 | 80455008 | DADO AUT.B M8 PG UNI7474 SELF-LOCKING NUT B. M8 PG UNI 7474 | G7 | 32017376 | SCHEDA ALIMENTATORE MT 2000 |
| F10 | 80445006 | DADO AUT. A. M 6 PG UNI 7473 5S SELF-LOCKING NUT A. M 6 PG UNI 7473 5S | | | FEEDER CARD MT 2000 |
| F11 | 36019873 | TIRANTE FRENO BRAKE TIE ROD | G8 | 36017162 | SUPPORTO CIRCUITO STAMPATO MT 2000 PRINTED CIRCUIT SUPPORT MT 2000 |
| F12 | 36017115 | GRUPPO ROTAZIONE FRENO MT 2000 BRAKE-ROTATION UNIT MT 2000 | G9 | 36017161 | PROTEZIONE CIRCUITO STAMPATO MT 2000 PRINTED CIRCUIT PROTECTION MT 2000 |
| F13 | 81450420 | SPINA EL. D.4x20 UNI 6873 PLUG D.4x20 UNI 6873 | G10 | 84100039 | TRASFORMATORE TM 09 TRANSFORMER TM 09 |
| F14 | 36019739 | PEDALE FRENO BRAKE PEDAL | G11 | | |
| F15 | 35017112 | BOCCOLA TASTATORE MT 2000 FEELER BUSH 3T 2000 | G12 | | |
| F16 | 84990475 | BARILOTTO FORATO PERFORATED BARREL | G13 | 80110007 | VITE AUTOFIL.2,9x9,5 DIN 7981 SELF-TAPPING SCREW 2,9x9,5 DIN 7981 |
| F17 | 84990476 | RONDELLA WASHER | G14 | 32017382 | CAVO RESISTENZA AUTO 220V MT 2000 CAR RESISTANCE CABLE 220V MT 2000 |
| | | | G15 | 80416006 | DADO A. M6 PG UNI 5587 6S NUT A. M6 PG UNI 5587 6S |
| | | | G16 | 81010006 | ROND.PIANA M6 UNI 6592 FLAT WASHER M6 UNI 6592 |
| | | | G17 | 80038025 | VITE TE M 6x20 UNI 5739 88 SCREW TE 3 6x20 UNI 5739 88 |
| | | | G18 | 36017163 | PIASTRA CIRCUITO STAMPATO PRINTED CIRCUIT PLAQUE |
| | | | G19 | 32017375 | SCHEDA CPU MT2000 CPU CARD MT 2000 |
| | | | G20 | 80396006 | DADO FLANGIATO M6 DIN 6923 FLANGED NUT M6 DIN 6923 |

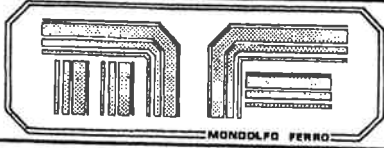
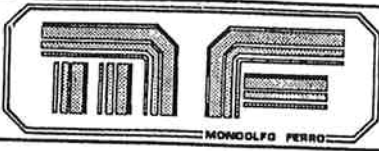


TABELLA RICAMBI
SPARE PARTS CODE
TABLE PIECES DE RECHANGE
ERSATZTEILLISTE
TABLA REPUESTOS

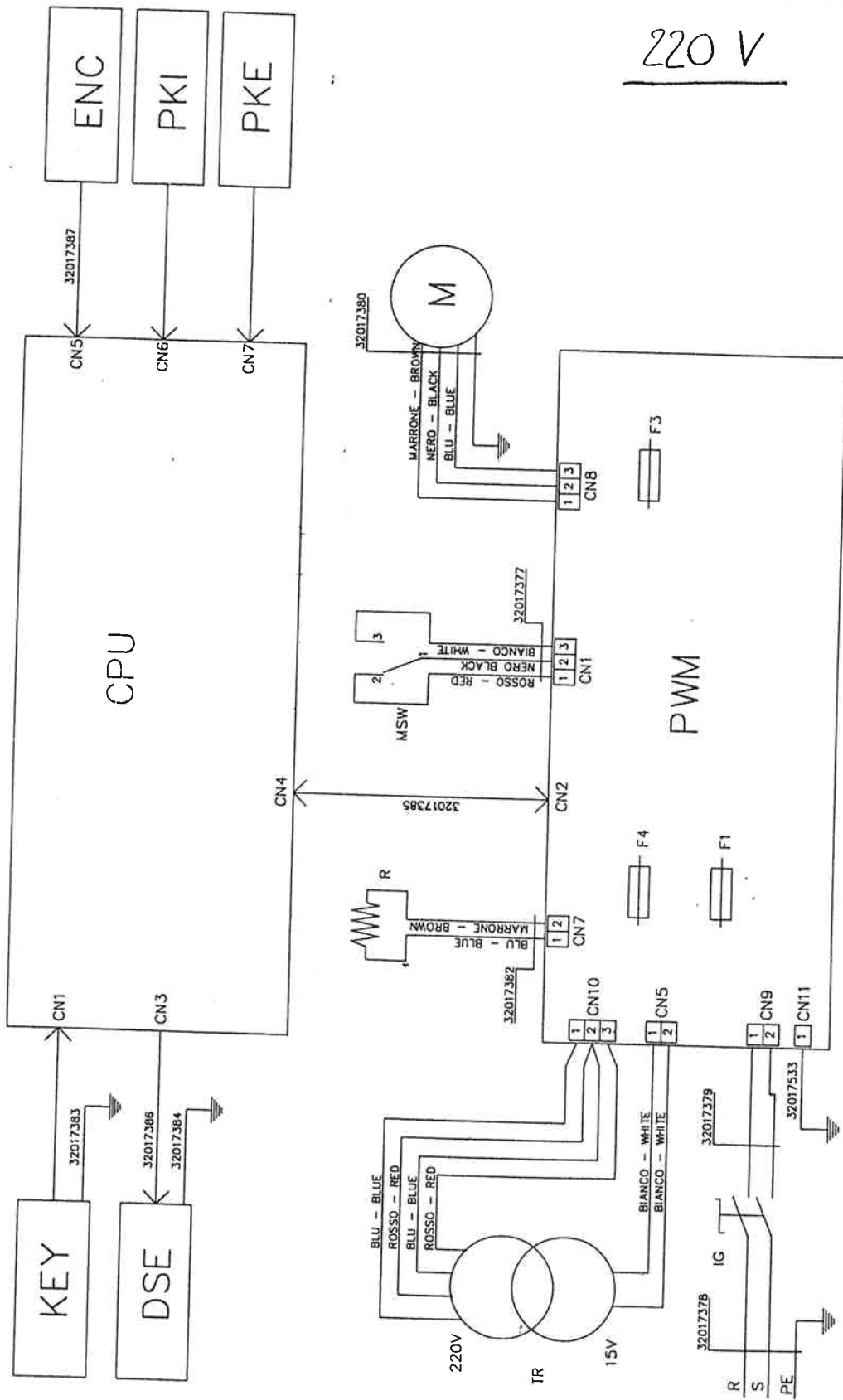
MT 2000

| Posizione Position Position Position Posicion | Codice ricambio Spare parts code Code rechanger Ersatzteilcode Codigo repuesto | Descrizione Description Description Beschreibung Descripción | Posizione Position Position Position Posicion | Codice ricambio Spare parts code Code rechanger Ersatzteilcode Codigo repuesto | Descrizione Description Description Beschreibung Descripción |
|---|--|--|---|--|--|
| G21 | 36017288 | PROTEZIONE PER PIASTRA PORTA C.S. C.S.HOLDER PLAQUE PROTECTION | | | |
| G22 | 84700018 | INTERRUTTORE BRETER LE 2-12-1752 BRETER SWITCH LE 2-12-1752 | | | |
| G23 | 33017160 | DISTANZIALE X C.S. DISPLAY MT 2000 C.S.DISPLAY SPACER MT 2000 | | | |
| G24 | 80416003 | DADO A. M3 NUT A. M3 | | | |
| G25 | 32017385 | CAVO CPU CPU CABLE | | | |
| G26 | 32018312 | CAVO RESISTENZA AUTO 110V MT 2000 CAR RESISTANCE CABLE 100V MT 2000 | | | |

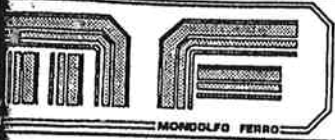


CAP. 17 SCHEMA ELETTRICO
CAP. 17 ELECTRIC WIRING
CAP. 17 SCHEMA ELECTRIQUE
CAP. 17 ELEKTRISCHER SHALTPLAN
CAP. 17 ESQUEMA ELECTRICO

MT 2000



00018076



CAP. 17 SCHEMA ELETTRICO
 CAP. 17 ELECTRIC WIRING
 CAP. 17 SCHEMA ELECTRIQUE
 CAP. 17 ELEKTRISCHER SHALTPLAN
 CAP. 17 ESQUEMA ELECTRICO

MT 2000

2000

CPU Scheda di elaborazione
 PWM Scheda di potenza
 DSE Pannello display
 KEY Tastiera
 ENC Encoder ottico
 PKI Pick-up interno
 PKE Pick-up esterno
 MSW Microinterruttore carter
 TR Trasformatore P220V-S15V 20VA
 IG Interruttore generale
 R Resistenza 18 Ohm 50 W
 F1 Fusibile T1A
 F3 Fusibile T6,3A
 F4 Fusibile T315mA
 M Motore 220V monofase 0,37 Kw

CPU CENTRAL PROCESSING UNIT BOARD
 PWM MONOPHASE POWER BOARD
 DSE DISPLAY PANEL
 KEY KEYBOARD
 ENC OPTICAL ENCODER
 PKI INNER PICK-UP
 PKE OUTER PICK-UP
 MSW WHEEL-GUARD MICROSWITCH
 TR TRANSFORMER P220V-S15V 20VA
 IG MAIN SWITCH
 R RESISTOR 18 OHM 50 WATT
 F1 FUSE T1A 8480030/1
 F3 FUSE T6,3A 8480040/6
 F4 FUSE T315mA 84801315
 M MOTOR 220V MONOPHASE 0,37KW

↔ x06
 315

MANUTENZION
 MAINTENANC

