

### ISTRUZIONI PER LA RICHIESTA DEI RICAMBI

- 1) Consultando le tavole di seguito riportate, individuare esattamente il n. del particolare desiderato (Ex. Tav. A n. A-10).
- 2) Dalla tabella ricambi, trovare il corrispondente codice (Ex. 33014710)
- 3) Nella richiesta specificare esattamente :

Il modello ed il n. di matricola della macchina.

Il codice ricambio (n. 8 cifre) del particolare desiderato.

Ex. MT 700 matr. 100, cod. 33014710.

MT-700

### INSTRUCTIONS FOR REQUESTING SPARE PARTS

- 1) Consulting the following tables, single out the exact n. of spare parts requested (Eg. Table A n. A-10).
- 2) Find the corresponding spare parts code from the spare parts table (E. 33014710)
- 3) In the request specify exactly :

The model and serial n. of the machine.

The spare parts code ( 8 figures ) of the requested spare part.

Eg. MT 700 serial n. 100, code 33014710.

### INSTRUCTIONS POUR LA DEMANDE DE PIÈCES DE RECHANGE

- 1) En consultant les tables ci-après, individualiser exactement le n. du détail désiré (Ex. Table A n. A-10).
- 2) De la table des pièces de rechange, trouver le code correspondant (Ex. 33014710)
- 3) Dans la demande spécifier exactement :

Le modèle et le n. de matricule de la machine.

Le code pièce de rechange (n. 8 chiffres) du détail désiré.

Ex. MT 700 matr. 100, code 33014710.

### ANWEISUNG FÜR DIE ERSATZTEILANFORDERUNG

- 1) Bestimmen Sie genau anhand der nach stehend angeführten Übersichtstafeln die Nummer des gewünschten Teils ( z.B. Tav. A Nr. A.-10).
- 2) Aus der Ersatzteiltafel den entsprechenden Code aufnotieren Z.B. 33014710
- 3) Bezeichnen Sie in der Anforderung klar und präzise:

Das Model und die Maschinennummer.

Den Ersatzteilkode ( 8 Ziffern ) des gewünschten Teils.

Z.B. MT 700 matr. 100 cod. 33014710

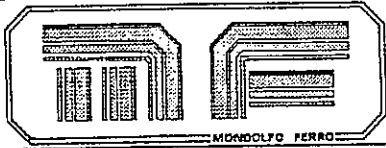
### INSTRUCCIONES PARA EL PEDIDO DE REPUESTOS

- 1) Consultando las tablas detalladas a continuación, identificar exactamente el n° de las piezas que se desean pedir ( Ej. Tav. A n. A-10).
- 2) Partiendo de la tabla, encontrar el código correspondiente (ej.: 33014710)
- 3) En el pedido especificar exactamente:

El modelo y el n° de la matricola de la máquina.

El código del repuesto ( n° 8 cifras ) de la pieza deseada.

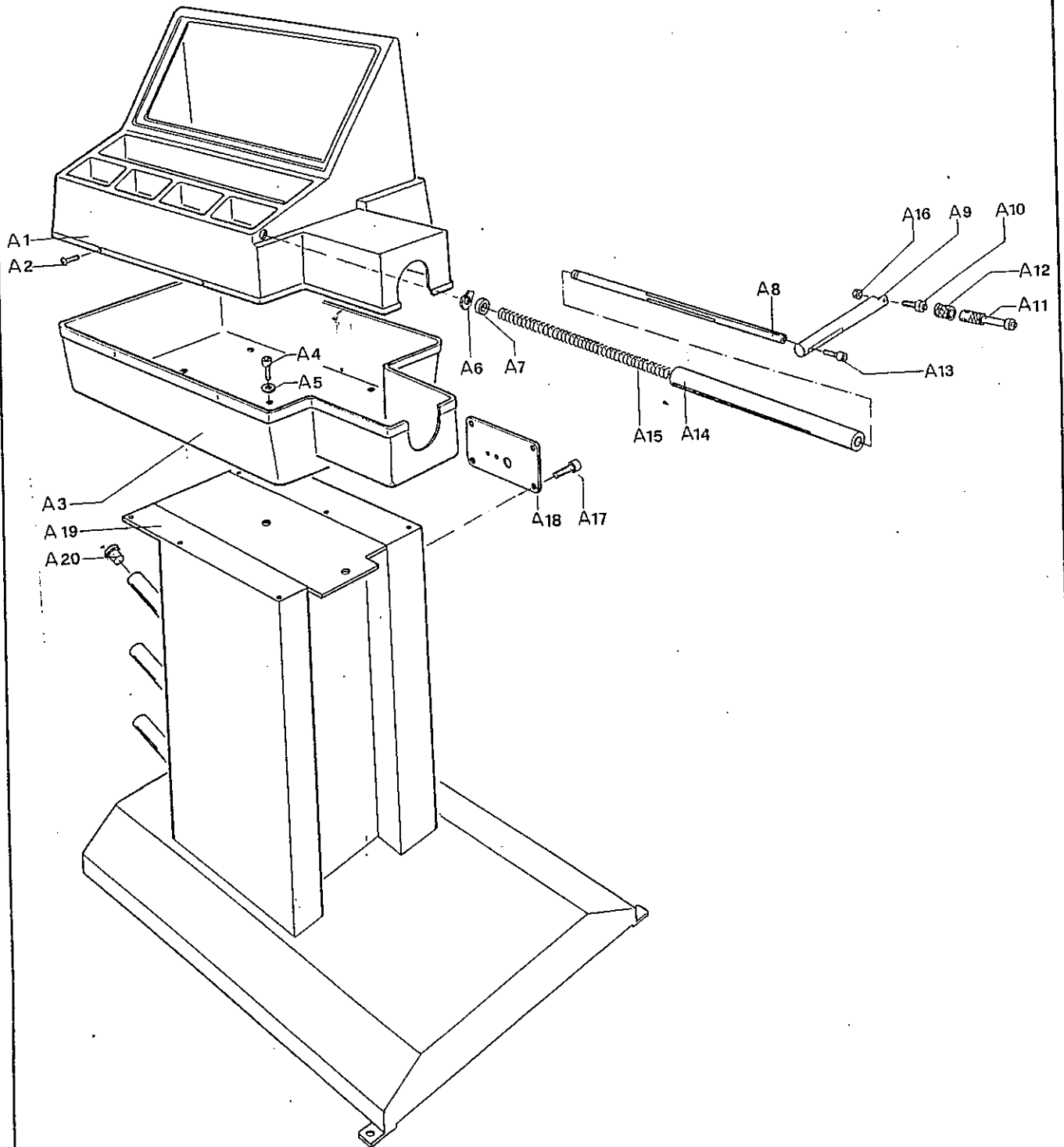
Ej. MT 700 matr. 100 cod 33014710.

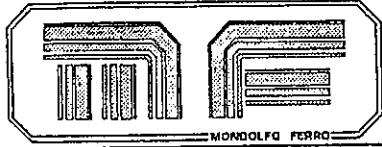


TELAIO  
FRAME  
CHÂSSIS  
RAHMEN  
CHASIS

MT 700  
TAV. A

**IMPORTANTE:** per la richiesta dei ricambi far riferimento al codice ricambi ( vedi pag. 27 ).  
**IMPORTANT:** for the request of spare parts please refer to spare parts code ( see page 27 ).  
**IMPORTANT:** pour la demande de pièces de rechange faire référence au code des pièces de rechange (voir pages 27 ).  
**WICHTIG:** für die Anforderung von Ersatzteilen die Ersatzteilcodes ( siehe Seite 27 ) angeben.  
**IMPORTANTE:** para pedir los repuestos remitirse al código repuestos ( ver pag. 27 ).



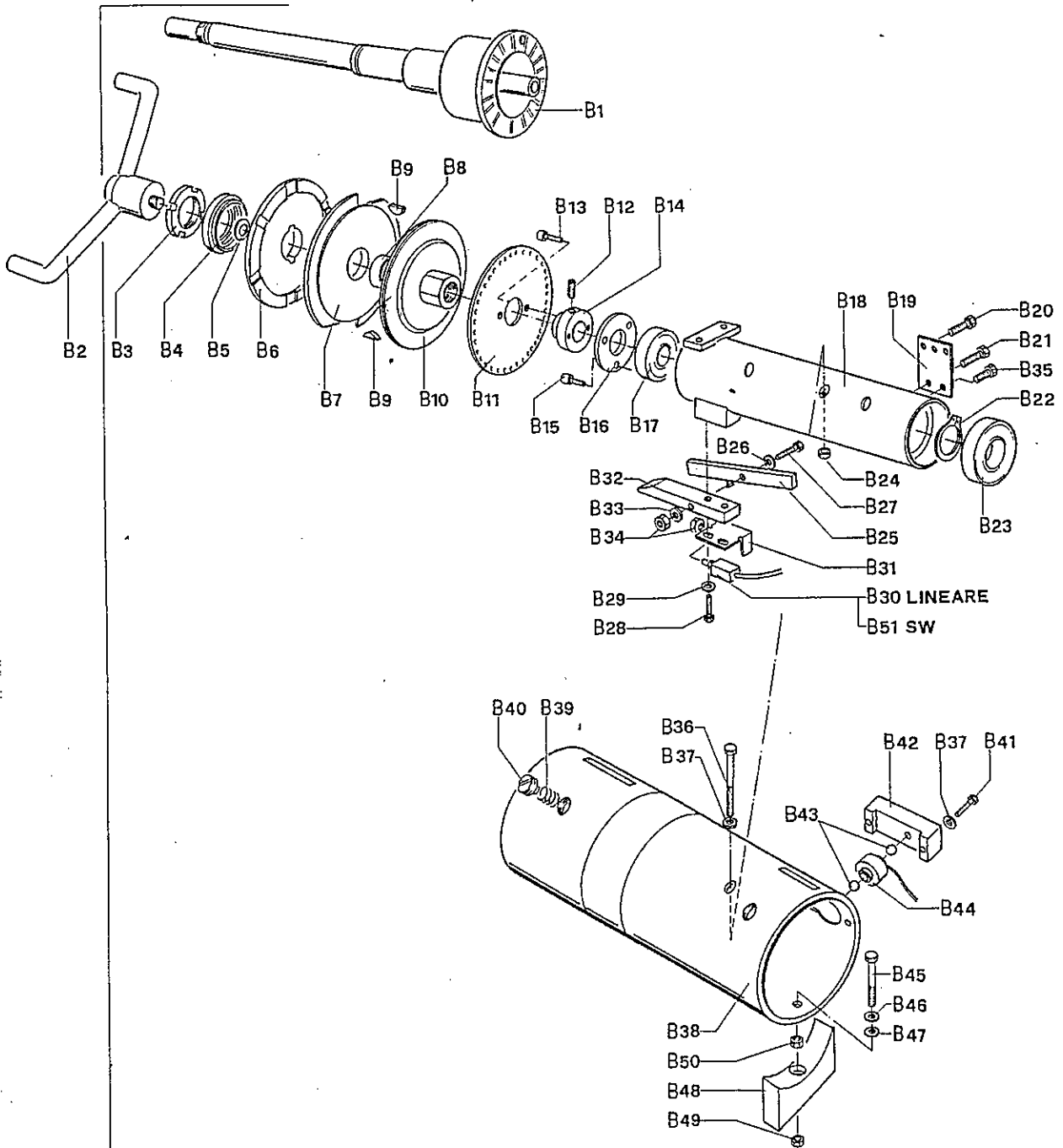


PARTE MECCANICA  
MECHANICAL PARTS  
PARTS MECHANIQUES  
MECHANISCHER TEIL  
PARTE MECANICA

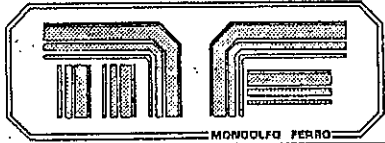
MT 700

TAV.B

**IMPORTANTE:** per la richiesta dei ricambi far riferimento al codice ricambi ( vedi pag. 27/28 ).  
**IMPORTANT:** for the request of spare parts please refer to spare parts code ( see page 27/28 ).  
**IMPORTANT:** pour la demande de pièces de rechange faire référence au code des pièces de rechange (voir pages 27/28 ).  
**WICHTIG:** für die Anforderung von Ersatzteilen die Ersatzteilcodes ( siehe Seite 27/28 ) angeben.  
**IMPORTANTE:** para pedir los repuestos remitirse al código repuestos ( ver pag. 27/28 ).



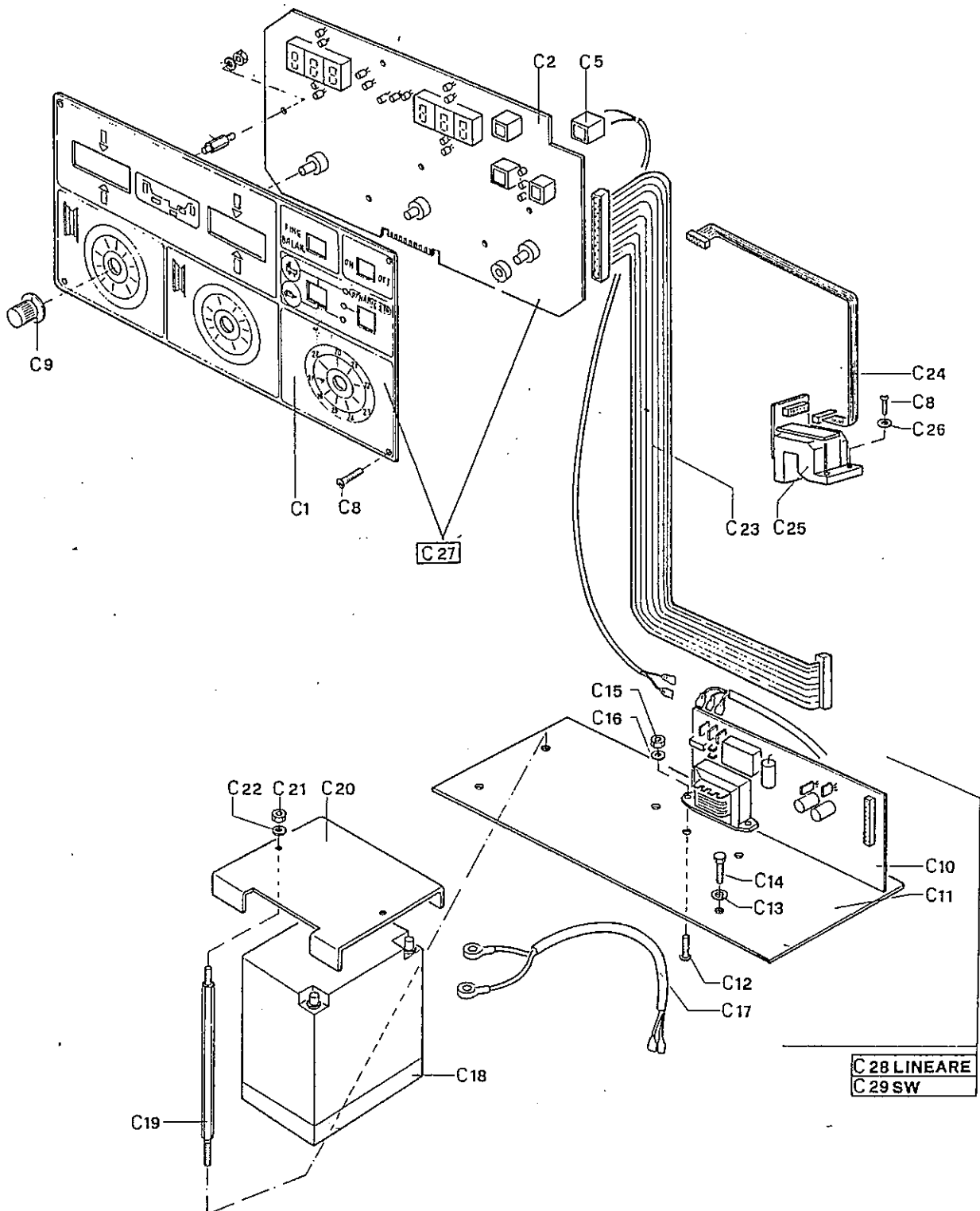
B52 LINEARE  
B53 SW



ELETTRONICA  
ELECTRONICS  
ELECTRONIQUE  
ELEKTRONIK  
ELECTRONICA

MT 700  
TAV. C

**IMPORTANTE:** per la richiesta dei ricambi far riferimento al codice ricambi ( vedi pag. 29 ).  
**IMPORTANT:** for the request of spare parts please refer to spare parts code ( see page 29 ).  
**IMPORTANT:** pour la demande de pièces de rechange faire référence au code des pièces de rechange (voir pages 29 ).  
**WICHTIG:** für die Anforderung von Ersatzteilen die Ersatzteilcodes ( siehe Seite 29 ) angeben.  
**IMPORTANTE:** para pedir los repuestos remitirse al código repuestos ( ver pag. 29 ).



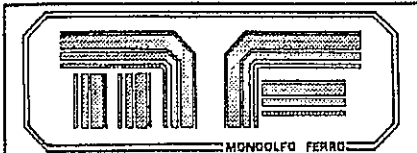


TABELLA RICAMBI  
SPARE PARTS CODE  
TABLE PIECES DE RECHANGE  
ERSATZTEILLISTE  
TABLA REPUESTOS

MT 700

Posizione Position Position Position Posición	Codice ricambio Spare parts code Code rechanger Ersatzteilcode Codigo repuesto	Descrizione Description Description Beschreibung Descripción	Posizione Position Position Position Posición	Codice ricambio Spare parts code Code rechanger Ersatzteilcode Codigo repuesto	Descrizione Description Description Beschreibung Descripción
<b>TAV. A</b>			<b>TAV. B</b>		
A 1	35014622	PIANO PORTAPESI MT700 MT800 WEIGHT HOLDER TABLE MT700 MT800	B 1	36014762	ALBERO MANDRINO CON FLANGIA MT700 SPINDLE WITH FLANGE MT700
A 2	80074010	VITE T.CROCE M 4X12 UNI 7687 48 PHILLIPS T. SCREW M 4X12 UNI 7687 48	B 2	36014946	VOLANTINO SX MT800/700(ELICA SX) HANDWHEEL SX MT800/700(LEFT SCREW)
A 3	35014623	FONDO PIANO PORTAPESI MT800 WEIGHT HOLDER TABLE BOTTOM MT800	B 3	80375035	GHIERA AUT. M 35X1,5 RING NUT AUT. M 35X1.5
A 4	30038024	VITE TE M 6X16 UNI 5739 88 SCREW TE M 6X16 UNI 5739 88	B 4	33014645	GHIERA SPINGIDISCO MT800 DISK PUSHER RING NUT MT800
A 5	81000618	ROND. PIANA FL M 6X18 UNI 6593 FLAT WASHER FL M 6X18 UNI 6593	B 5	33008561	MOLLA TAZZA DIS 0529 DISK CUP SPRING 0529
A 6	81410010	ANELLO ELASTICO D 10 A10 UNI 7433 PISTON RING D 10 A10 UNI 7433	B 6	36014643	PIATTO MOBILE FRIZIONE MT800 CLUTCH MOBILE PLATE MT800
A 7	35014709	BOCCOLA GUIDA TASTATORE MT800 FEELER GUIDE BUSH MT800	B 7	33015149	DISCO FRIZIONE CLUTCH DISK
A 8	33014862	ASTA TASTATORE MT700 FEELER ROD MT700	B 8	88060074	CUSCINETTO RAD. STAGNO 6007-2RS WATERTIGHT RAD. BEARING 6007-2RS
A 9	33012693	BRACCIO TASTATORE MT700 FEELER ARM MT700	B 9	81600565	LINGUETTA 6X6,5 UNI 6606 TAB 6X6.5 UNI 6606
A 10	33014710	PERNO TASTATORE LARGHEZZA MT800 FEELER PIN WIDTH MT800	B 10	36014639	PIATTO FISSO FRIZIONE MT800 CLUTCH FIXED PLATE MT800
A 11	33013683	ASTA PROLUNGA TASTATORE MOTO DISTANCE GAUGE EXTENTION	B 11	36012499	DISCO ENCODER MT3000-6000 PC ENCODER DISK MT3000-6000 PC
A 12	33013682	GHIERA PROLUNGA TASTATORE MOTO NUT FOR DISTANCE	B 12	80172023	GRANO M 6X12 UNI 5925 12.9 DOWEL M 6X12 UNI 5925 12.9
A 13	80108034	VITE TCCE M 6X16 UNI 5931 88 SCREW TCCE M 6X16 UNI 5931 88	B 13	80108001	VITE TCCE 3X8 UNI 5931 8.8 SCREW TCCE 3X8 UNI 5931 8.8
A 14	35014705	GUIDA TASTATORE MT800 FEELER GUIDE MT800	B 14	33015160	BOCCOLA DISCO ENCODER MT 800 ENCODER DISK BUSHING MT 800
A 15	33014708	MOLLA RICHIAMO TASTATORE MT800 FEELER RETURN SPRING MT800	B 15	80108004	VITE TCCE M4X12 UNI 5931 8.8 SCREW TCCE M4X12 UNI 5931 8.8
A 16	80436008	DADO B. M 8 PG UNI 5589 6S NUT B. M 8 PG UNI 5589 6S	B 16	33011963	ANELLO BLOCC. CUSCINETTO MT500 BEARING LOCK RING MT500
A 17	80074019	VITE T.CROCE M.5X8 UNI 7687 PHILLIPS T. SCREW M.5X8 UNI 7687	B 17	88060089	CUSCINETTO RAD. STAGNO 6008-2RS SKF WATERTIGHT RAD. BEARING 6008-2RS SKF
A 18	36014777	CARTER BASAMENTO MT800 BED OIL PAN MT800	B 18	36014760	SUPPORTO ALBERO MANDR. MT700 SPINDLE SUPPORT MT700
A 19	36014843	BASAMENTO MT700 BED MT700	B 19	36014661	BALESTRA MT 700 MT 800 LEAF SPRING MT700 MT800
			B 20	80108021	VITE TCCE M 5X20 UNI 5931 88 SCREW TCCE M 5X20 UNI 5931 88
			B 21	80038049	VITE TE 8X14 UNI 5739 88 SCREW TE M 8X14 UNI 5739 88

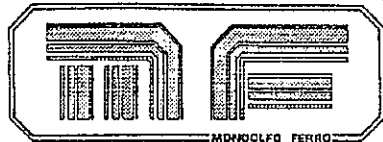


TABELLA RICAMBI  
SPARE PARTS CODE  
TABLE PIECES DE RECHANGE  
ERSATZTEILLISTE  
TABLA REPUESTOS

MT 700

Posizione Position Position Position Posicion	Codice ricambio Spare parts code Code rechanger Ersatzteilcode Codigo repuesto	Descrizione Description Description Beschreibung Descripción	Posizione Position Position Position Posicion	Codice ricambio Spare parts code Code rechanger Ersatzteilcode Codigo repuesto	Descrizione Description Description Beschreibung Descripción
B 22	81300040	SEEGER EST. D40 UNI 7435 EXT. SEEGER D 40 UNI 7435	B 43	88900516	SFERA PICK-UP 5/16"7,938 PICK-UP BALL 5/16"7.938
B 23	88062069	CUSCINETTO RAD STAGNO 6206-2RS/SKF WATERTIGHT RAD. BEARING 6206-2RS SKF	B 44	32012780	RILEVATORE PICK-UP MT500 PICK-UP MT500
B 24	80445006	DADO AUT. A. M 6 PG UNI 7473 5S NUT AUT. A. M 6 PG UNI 7473 5S	B 45	80038060	VITE TE M 10X70 UNI 5739 88 SCREW TE M 10X70 UNI 5739 88
B 25	36014718	GRUPPO LEVA FRENO MT700/MT800 BRAKE LEVER GROUP MT700/MT800	B 46	81010010	ROND. PIANA M 10 UNI 6592 FLAT WASHER M 10 UNI 6592
B 26	80018016	VITE TE M 8X45 UNI 5737 SCREW TE M 8X45 UNI 5737	B 47	81120010	ROND EL. M 10 DIN 137 B WASHER EL M 10 DIN 137 B
B 27	81010008	ROD. PIANA M 8 UNI 6592 FLAT WASHER M 8 UNI 6592	B 48	33014616	CULLA ESTERNA MT700 MT800 EXTERNAL CRADLE MT700 MT800
B 28	80018021	VITE TE M 10X40 UNI 5737 88 SCREW TE M 10X40 UNI 5737 88	B 49	80445010	DADO AUT. A. M 10 PG UNI 7473 5S NUT AUT. A. M 10 PG UNI 7473 5S
B 29	81010010	ROND PIANA M 10 UNI 6592 FLAT WASHER M 10 UNI 6592	B 50	80416010	DADO A. M10 PG UNI 5587 6S NUT A. M 10 PG UNI 5587 6S
B 30	32014657	ELETTROMAGN. E141/P 24V LINEARE ELECTROMAGNET.E1417P 24V LINEAR	B 51	32015192	ELETTROMAGNETÈ E14T/P-12Vcc - 50% SW ELECTROMAGNET E 141/P-12 Vcc-50% SW
B 31	36014721	SUPPORTO ELETTROCALAMITA MT700/800 - ELECTROMAGNET SUPPORT MT700/MT800	B 52	31120045	GRUPPO MECCANICA MT700 LINEARE LINEAR MT 700 MECHANICAL GROUP
B 32	33014717	CONTRASTO LEVA FRENO MT700/MT800 BRAKE LEVER CONTRAST MT700/MT800	B 53	31120054	GRUPPO MECCANICA MT700 SW MECHANICAL GROUP MT700 SW
B 33	81010008	ROND PIANA M 8 UNI 6592 FLAT WASHER M 8 UNI 6592			
B 34	80455008	DADO AUT.B M8 PG UNI7474 NUT AUT.B M8 PG UNI7474			
B 35	33014697	VITE SEDE SFERA PICK-UP MT700/MT800 PICK-UP BALL SEAT SCREW MT700/800			
B 36	80018102	VITE TE M 6X100 UNI 5737 SCREW TE M 6X100 UNI 5737			
B 37	81010006	ROND. PIANA M6 UNI 6592 FLAT WASHER M 6 UNI 6592			
B 38	33014604	CANOTTO ESTERNO MT800 EXTERNAL SCREW TUBE MT800			
B 39	33012235	MOLLA PIASTRA EQUIL./TBE48 DELUXE EQUIL. PLATE SPRING/ TBE48 DELUXE			
B 40	33014680	VITE REGOLAZIONE MOLLA MT700/MT800 SPRING ADJUSTMENT SCREW MT700/800			
B 41	80108038	VITE TCCE M6X30 UNI5931 SCREW TCCE M6X30 UNI5931			
B 42	33014615	PIASTRA DI CONTRASTO MT700/MT800 CONTRAST PLATE MT700/800			

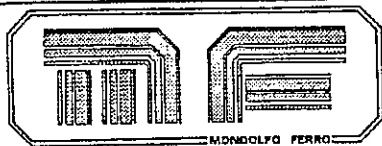


TABELLA RICAMBI  
SPARE PARTS CODE  
TABLE PIECES DE RECHANGE  
ERSATZTEILLISTE  
TABLA REPUESTOS

MT 700

Posizione Position Position Position Posición	Codice ricambio Spare parts code Code rechanger Ersatzteilcode Codigo repuesto	Descrizione Description Description Beschreibung Descripción	Posizione Position Position Position Posición	Codice ricambio Spare parts code Code rechanger Ersatzteilcode Codigo repuesto	Descrizione Description Description Beschreibung Descripción
<b>TAV. C</b>					
C 1	32014924	PANNELLO+SERIGRAFIA MT700 PANEL+SERIGRAPH MT700	C 27	31320036	PANNELLO SCHEDA ELETTRONICA MT700 ELECTRONIC CARD PANEL MT700
C 5	32012502	INTERRUTT.ON-OFF MT500 + CAVO ON-OFF SWITCH MT500 + CABLE	C 28	31320033	GRUPPO ALIMENTATORE MT800 LIN. FEEDER GROUP MT800 LIN.
C 8	80074010	VITE T. CROCE M 4X12 UNI 7687 48 PHILLIPS T. SCREW M 4X12 UNI 7687 48	C 29	31320035	GRUPPO ALIMENTATORE MT800 FEEDER GROUP MT800 SW <i>→ 1.5751-4.84.</i>
C 9	32012078	MANOPOLA CAPPUCCIO ROSSO FBM-18 RED CAP KNOB FBM-18			
C 10	32014873	SCHEDA ALIMENTATORE X MT 800 LIN. FEEDER CARD X MT 800 LIN.			
C 11	36014713	SUPPORTO ALIMENTATORE MT700/800 FEEDER SUPPORT MT700/800			
C 12	80074010	VITE T.CROCE M 4X12 UNI,7687 48 PHILLIPS T. SCREW M 4X12 UNI 7687 48			
C 13	81010006	ROND. PIANA M 6 UNI 6592 FLAT WASHER M 6 UNI 6592			
C 14	80038027	VITE TE M 6X30 UNI 5739 88 SCREW TE M 6X30 UNI 5739 88			
C 15	80445004	DADO AUT. A. M 4 PG UNI 7473 5S NUT AUT. A. M 4 PG UNI 7473 5S			
C 16	81000624	ROND. FL 6X24 UNI 6593 (NR250/KG) WASHER FL 6X14 UNI6593 (NR250/KG)			
C 17	32012538	CAVO ELETTR. RICARICA BATTERIA BATTERY RECHARGE ELECTRIC CABLE			
C 18	89000001	BATTERIA 9,5A 12V A300 (07191525) BATTERY 9.5A 12V A300 (07191525)			
C 19	33014698	TIRANTE FISSAGGIO BATT. MT700/800 BATTERY FASTENING STAY MT700/800			
C 20	36014722	STAFFA FISSAGGIO BATTERIA MT700/80 BATTERY FASTENING CLAMP MT700/80			
C 21	80445006	DADO AUT. A. M6 PG UNI 7473 5S NUT AUT. A. M 6 PG UNI 7473 5S			
C 22	81010006	ROND. PIANA M 6 UNI 6592 FLAT WASHER M 6 UNI 6592			
C 23	32012493	CAVO FLAT 20 VIE ALIMENTAT. MT500 FEEDER 20-WAY FLAT CABLE MT500			
C 24	32012494	CAVO FLAT 10 VIE OPTO-ELETTR.MT50 OPTIC ELECT. 10-WAY FLAT CABLE MT50			
C 25	31320009	GRUPPO RILEVAT. OPTO MT500 MT8000 OPTIC PICK-UP GROUP MT500 MT8000			
C 26	81010004	ROND. PIANA M4 UNI 6592 FLAT WASHER M 4 UNI 6592			